

Weight	Thickness	Surface	OBA Content	Sizes
300 gsm	13.8 mil	Semi-gloss	None	See website

Using an ICC Profile?

Do not use this document. Refer to profile instructions included with the profile download.

PRINTABLE – Front Photo & Art Quality / Back – NOT PRINTABLE

MEDIA TYPE / PRINT QUALITY SETTINGS

THICK PAPER ALERT

www.redriverpaper.com/feed

EPSON

Media Type: Baryta / Legacy Baryta

Alternative: Premium Photo Paper Semigloss

EMY Epson Media files available for select models. See profile download.

Quality: Best Photo or 1440dpi. Photo if the first two are unavailable.

CANON

Media Type Desktop: Photo Paper Plus Semi-gloss II

Media Wide Format: Photo Paper Plus Semi-gloss II or Photo Paper Plus Semi-gloss

AM1X Config files available for select models. See profile download.

Quality: High

HP

Satin Photo Paper or closest equivalent

What is a media type? www.redrivercatalog.com/mediatype

COLOR MANAGEMENT

Red River Paper offers free printer color profiles for our products and many printers. Profiles are small data files, used by applications like Photoshop, that help you get better and more consistent print quality.

Do I have to use profiles for good results?

No – They are helpful in many respects but are not required.

Profiles and support: <https://www.redriverpaper.com/profiles>

RESOURCES

Paper Handling, Storage, & Display Guide – www.redriverpaper.com/guide

In-Depth Settings Guides – www.redriverpaper.com/settings

Tips for Paper Feed - www.redriverpaper.com/feed

Custom Paper Size Setup – www.redriverpaper.com/customsize

Greeting Card Setup & Printing – www.redriverpaper.com/cardhelp

TRY SOMETHING NEW - SAMPLE KITS ARE THE BEST WAY!

www.redriverpaper.com/samples

TURN YOUR IMAGES INTO CUSTOM CARDS

www.redriverpaper.com/cardshop

POTENTIAL ISSUES - EPSON / WINDOWS

Epson Pro printers can exhibit two issues - star wheel or white scrape “comb” marks - which can appear in areas of heavy saturation, particularly on larger sheets of paper. To eliminate the marks, you slightly reduce ink density.

Below are recommended settings to correct this issue if it appears. They are broken down by Epson models and operating system.

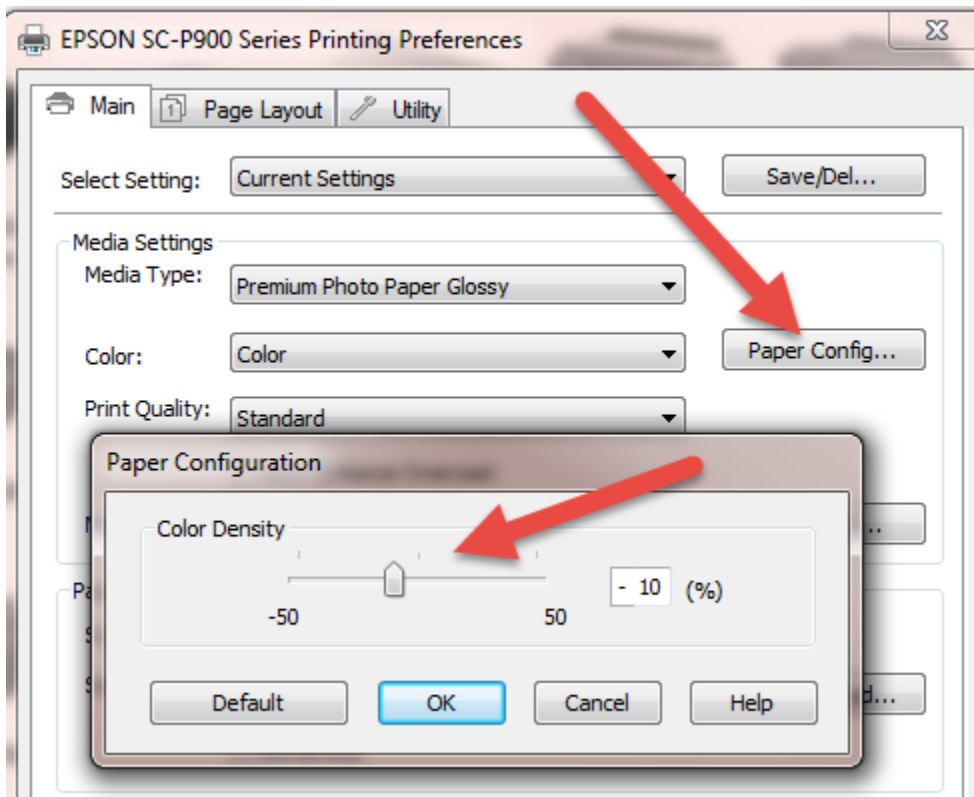
WINDOWS

P700
P900
P7570
P9570

Epson Pro printers can exhibit two issues - star wheel or white scrape “comb” marks - which can appear in areas of heavy saturation, particularly on larger sheets of paper. To eliminate the marks, you slightly reduce ink density.

Main > Paper Configuration > Color Density

Start at minus 10 and do not exceed minus 15



DO NOT FORGET TO SET THICK PAPER SETTING, described above.

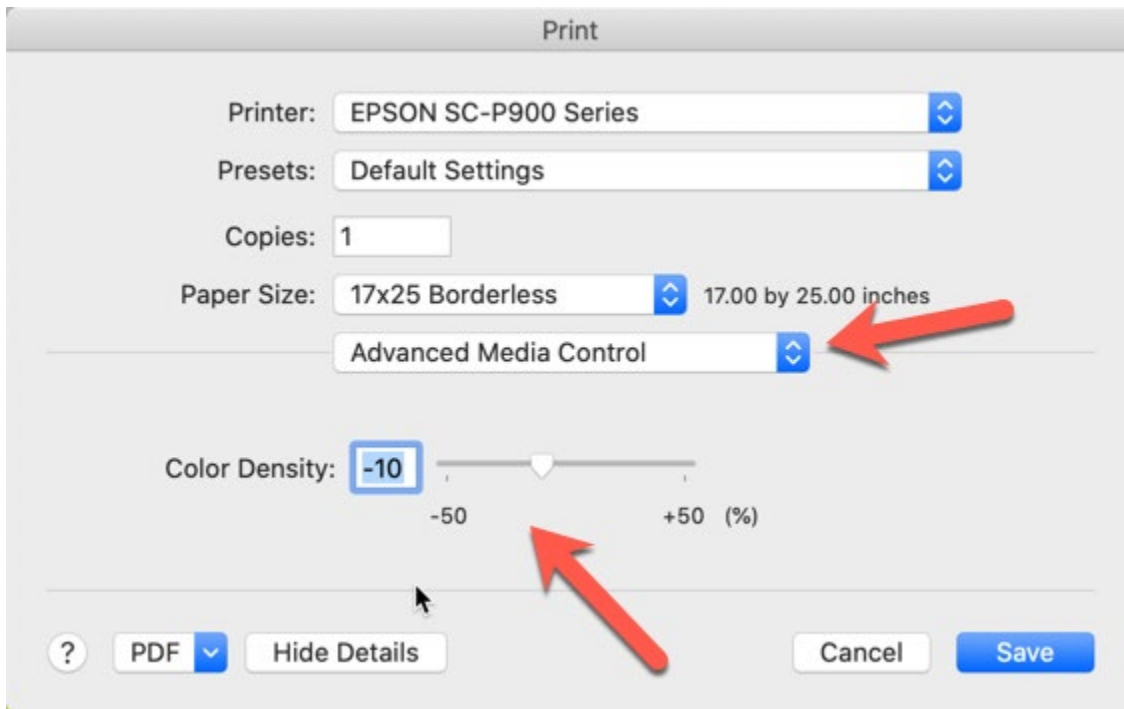
MAC

P700
P900
P7570
P9570

Epson Pro printers can exhibit two issues - star wheel or white scrape “comb” marks – which can appear in areas of heavy saturation, particularly on larger sheets of paper. To eliminate the marks, you slightly reduce ink density.

Print > Advanced Media Control**

Start at minus 10 and do not exceed minus 15.



DO NOT FORGET TO SET THICK PAPER SETTING, described above.

** If you do not see an Advanced Media Control option, you are probably using the AirPrint driver. To correct the issue, go to our website and search the term “airprint hijack” to correct the problem.

WINDOWS

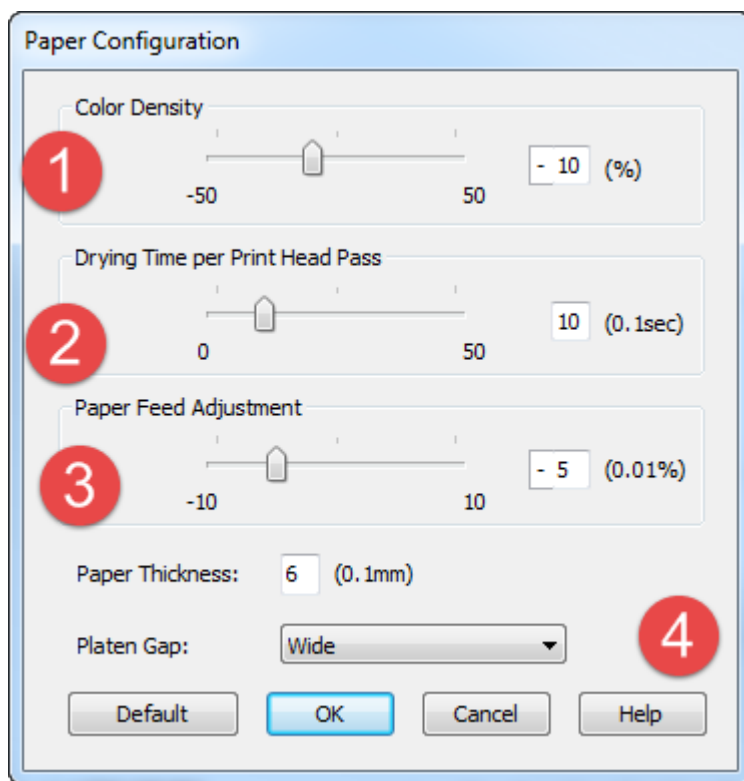
P600
P800
P400
P6000
P7000

P8000
P9000
P10000
P20000
R3000

R2000
3800 / 3880
4000 / 4800 / 4880
7600 / 7800 / 7880
7890 / 9890
4900 / 7900 / 9900

Epson Pro printers can exhibit two issues - star wheel or white scrape “comb” marks – which can appear in areas of heavy saturation, particularly on larger sheets of paper.

To eliminate the marks, you can slow the print process and slightly reduce ink density using the Paper Configuration menu found in the printer driver.



Above is the Paper Configuration menu, accessed from the Printer Preferences win Windows or Print dialog in Mac

- 1 - Color Density control is a fine ink throttle. Start at minus 10. Do not exceed minus 15
- 2 - Drying Time - Set between 10 and 20. This adds a pause to the print head pass.
- 3 - Paper Feed Adjustment - Start at minus 5. If the issue persists, set to minus 10.
- 4 - Change paper thickness from 5 to 6. Set Platen Gap to Wide.

MAC

P600
P800
P400
P6000
P7000

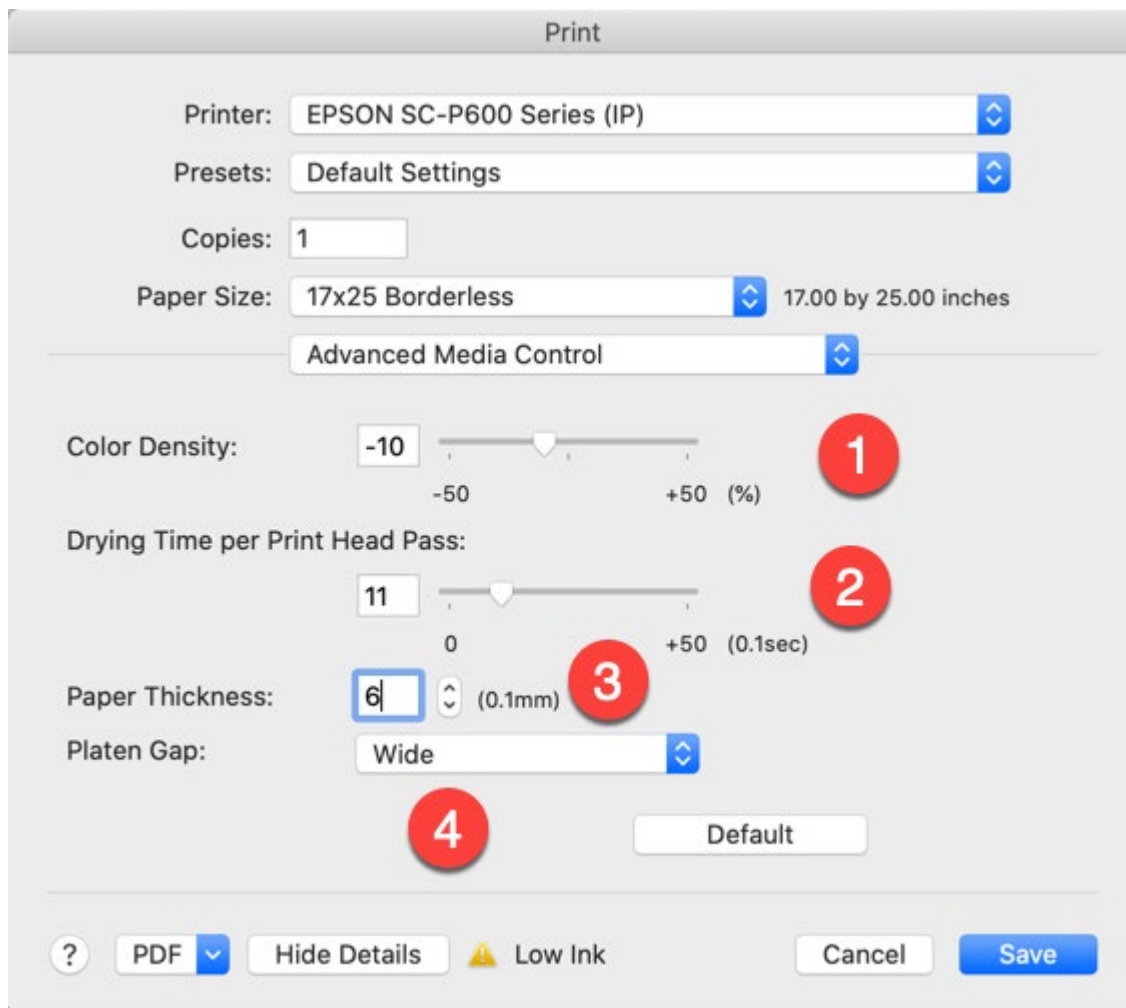
P8000
P9000
P10000
P20000
R3000

R2000
3800 / 3880
4000 / 4800 / 4880
7600 / 7800 / 7880
7890 / 9890
4900 / 7900 / 9900

Epson Pro printers can exhibit two issues - star wheel or white scrape “comb” marks – which can appear in areas of heavy saturation, particularly on larger sheets of paper.

To eliminate the marks, you can slow the print process and slightly reduce ink density using the Paper Configuration menu found in the printer driver.

Print > Advanced Media Control



1 - Color Density control is a fine ink throttle. Start at minus 10. Do not exceed minus 15.

2 - Drying Time - Set between 10 and 20. This adds a pause to the print head pass.

3 - Change paper thickness to 6.

4 - Set Platen Gap to Wide.