



Color Profile Usage with Canon Printers and MAC

Responding to demand from our customers, Red River Paper now offers color profiles for our most popular papers on a number of printer platforms. Color profiles are pieces of software that bypass your printer color management in an attempt to reproduce better color gamut and print quality for a specific paper, printer and inkset. Color profiles require the use of Photoshop (Including Photoshop Elements), preferably Photoshop 7.0 or CS. If you are unfamiliar with profiles or Photoshop, read all support documents carefully before beginning.

NOTE! Due to the technical nature of color management, Red River Paper cannot offer technical support for these profiles beyond the documents and links included with each profile.

Step One

Download two PDF docs from the “instructions downloads” section of our profiles site. The first is Epson’s color management primer. The second is our new color management field guide written by the folks at Chromix.

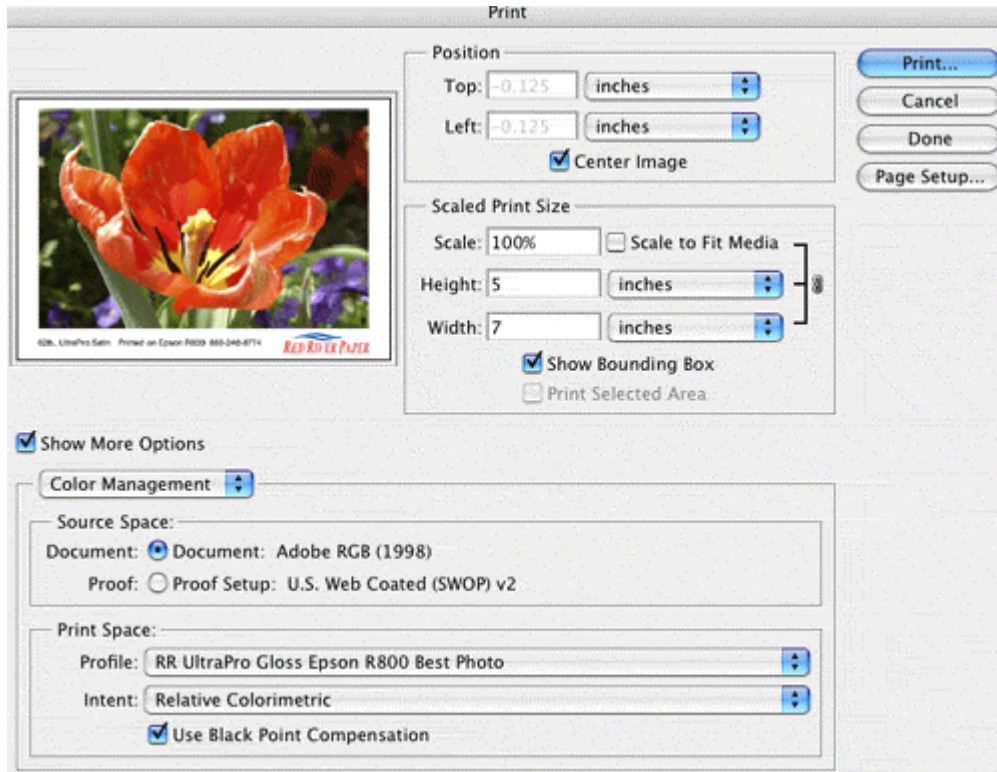
Step Two

Install the Red River profiles on your computer. The ICC files must be placed in the proper folder for Photoshop to see and use them. Mac users will have to manually place the file in one of the folders below.

<u>Operating System</u>	<u>ICC File Location</u>
Mac OS 9.2.2	System Folder/Colorsync Profiles
Mac OSX	Library/Colorsync/Profiles

Print using Red River's profiles.

1) In Photoshop, from the file menu, select "Print with Preview". If you use Photoshop 6.0 or lower, select "Print" from the file menu.



- In the drop down directly below "Show More Options", choose Color Management.
- In Source Space click on the Document radio button.
- In Print Space use the drop down menu to select the profile you want to use.
- Verify that the Intent dropdown menu says Perceptual or Relative Colorimetric
- Verify that Use Black Point Compensation is checked

When you are satisfied with the page layout and color management settings, click Print to proceed.

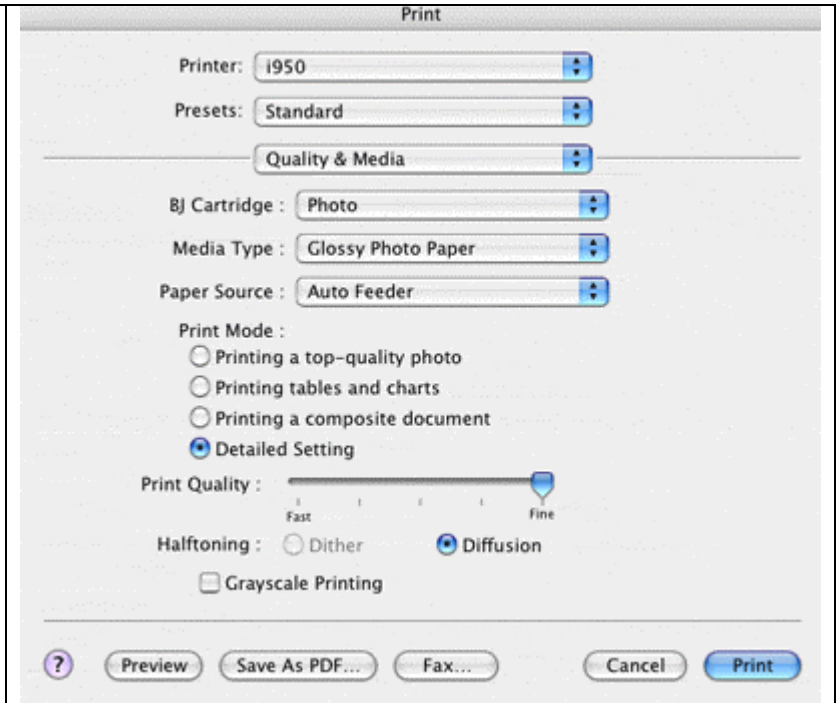
- 2) Set your printer driver settings. NOTE! You must have the latest version of the Canon print driver to properly use ICC profiles. You can get the latest driver for your printer at www.canonusa.com.

On the Quality and Media tab, set:

Media Type – what media setting to use is included with your profile download

Print Mode – choose Detailed Setting so you can have maximum control over print quality.

**Note – your screen may look different as OSX evolves. Please use this as a general guide.



On the Color tab, set:

Color Correction to None

Leave all other settings as is.

If you do not see this choice, update your printer software at www.canonusa.com.

If you still do not see the option, then you probably do not have the driver installed properly or all of the printers functionality is not activated in the OS. Consult Apple if you run into this problem.

Click OK and proceed with your print.

