

Using Printer Color Profiles

Photoshop ELEMENTS 6 – Epson – Windows

Color profiles are pieces of software that contain the color space, or dynamic range of a particular printer, ink, and paper combination. Printer color profiles are crucial to a color-managed workflow that results in accurate and consistent color reproduction.

Step 1

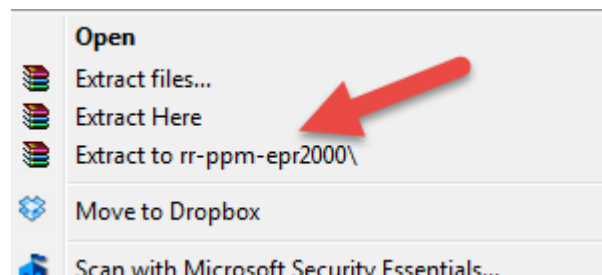
Download the Profile

Click on the link for your printer and Red River Paper inkjet paper. You will be prompted to download a file. We recommend saving it to your desktop or downloads folder.

Extract the Downloaded File

The file you downloaded is a ZIP file. It must be extracted before use.

Right click on the file and choose one of the “Extract” options. This will extract, or unzip, the file to a location of your choosing.



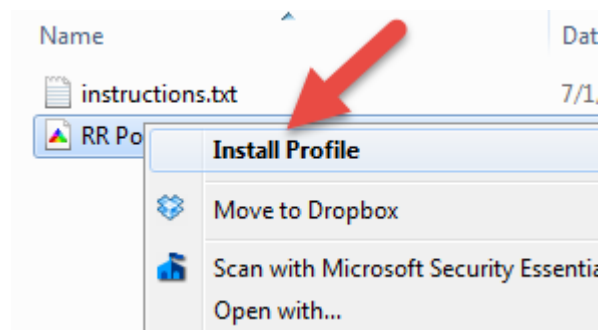
Step 2

Install the Profile

Installing printer profiles is really just copying them to a specific folder in your operating system. This must be done before your photo editing software can use them.

After the profile is unzipped, simply RIGHT CLICK on the file and choose Install Profile from the menu.

You can also manually drag and drop a profile into the profiles folder. See the chart below.



Operating System Printer Profile Location

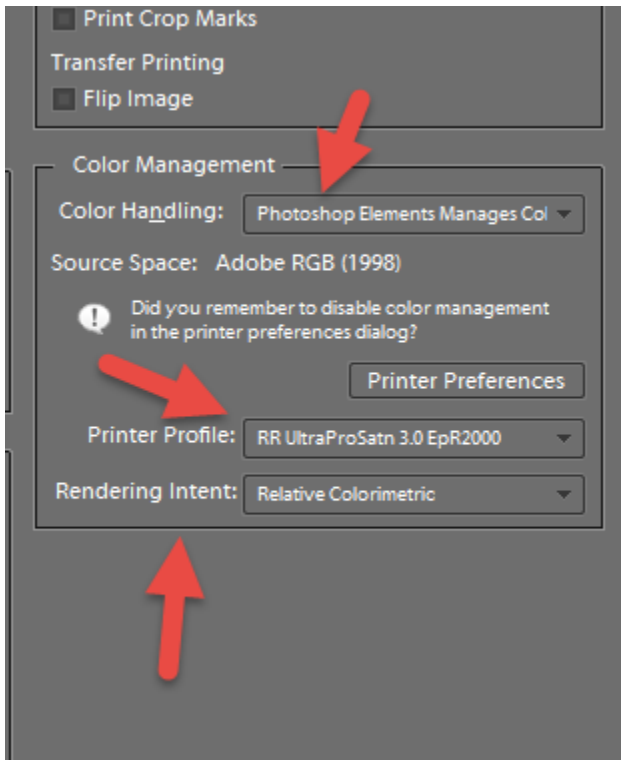
This is the folder where profiles are stored on your hard drive.

Win 98/ME	Windows/System/Color
Win NT/2000	Windows/System32/Spool/Drivers/Color
WinXP / Vista	Windows/System32/Spool/Drivers/Color
Win7 / Win8	Windows/System32/Spool/Drivers/Color

Using Red River Paper profiles with your Epson printer

Step 3

From Photoshop ELEMENTS choose File > Print or hit Ctrl + P on your keyboard and the Print dialog appears.



In the Color Management area set the following:

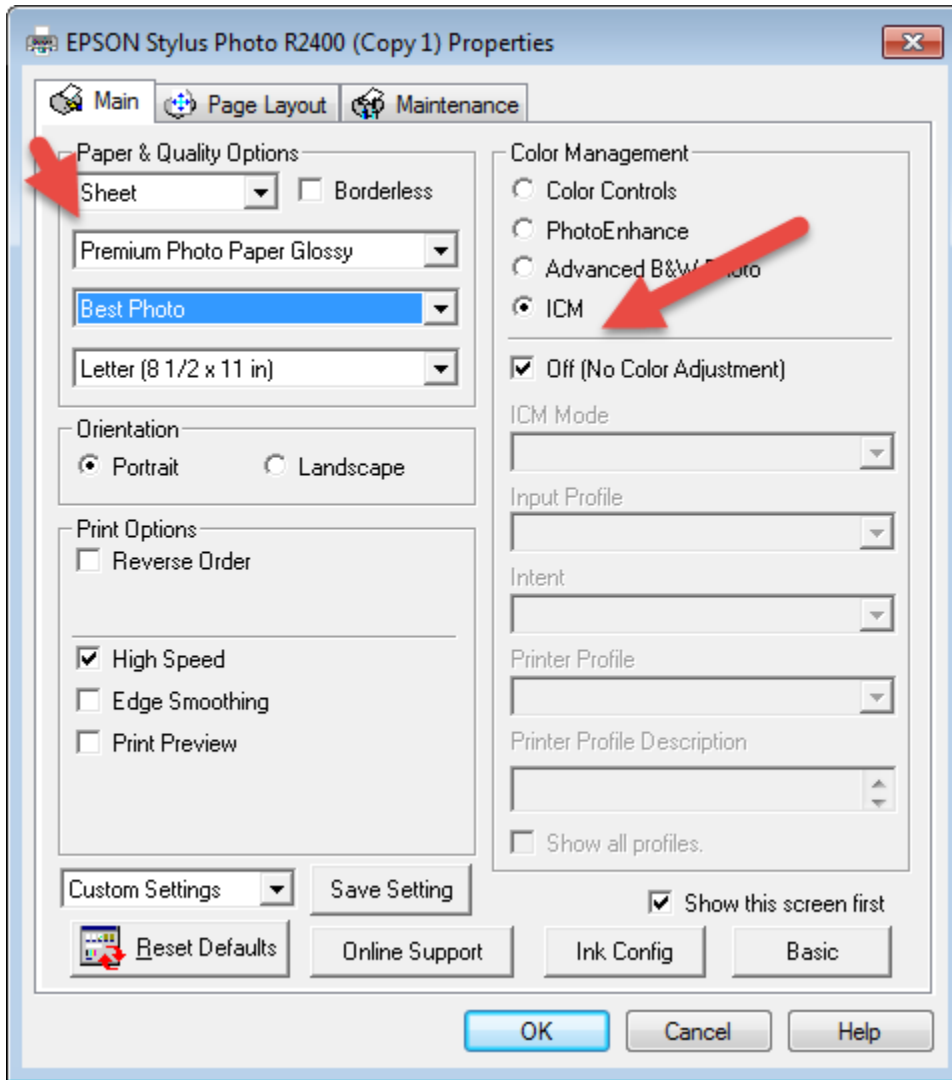
- 1) Color Handling: Photoshop Elements Manages Color
- 2) Printer Profile: Choose the profile for your paper and printer
- 3) Rendering Intent: We recommend Relative Colorimetric. You can also try the Perceptual setting. More information on this topic is available at our website.

Now click the Printer Preferences button to open your printer's properties dialog.

Epson Printer Properties

Step 4

Depending on your printer, you will see one of these two dialogs. Here we are instructing Epson to shut down its color controls so Photoshop can manage colors.



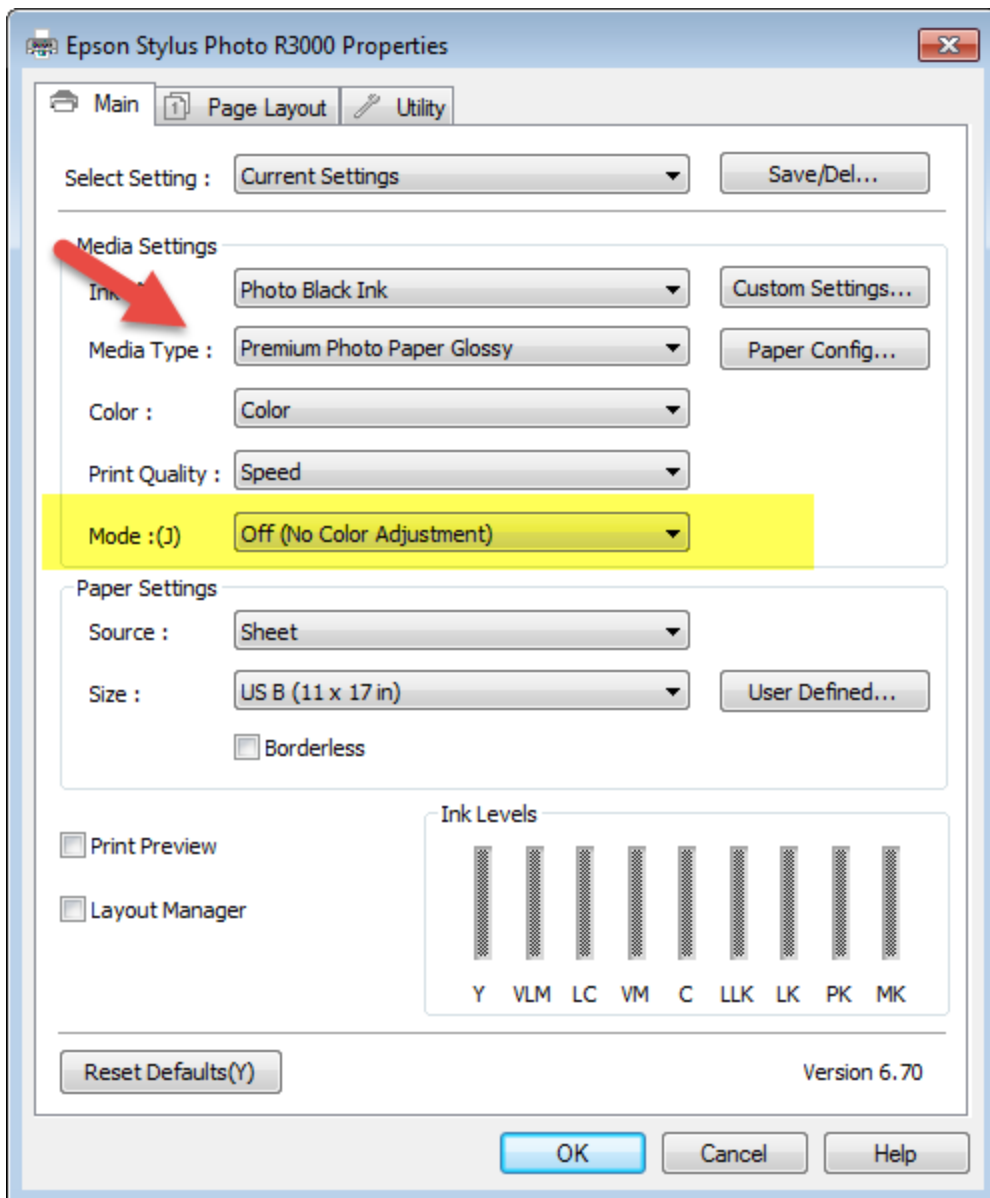
Printer Properties Example 1

1. Set media type according to the profile's instructions.

You will not see Red River Paper products listed here, only Epson papers.

2. Under Color Management, set ICM then Off (No Color Adjustment)

3. Choose your print quality, paper size, orientation, then click OK to go back to the Photoshop Elements print dialog.



Printer Properties Example 2

1. Set media type according to the profile's instructions.

You will not see Red River Paper products listed here, only Epson papers.

2. Under Mode, choose Off (No Color Adjustment)

3. Choose your print quality, paper size, orientation, then click OK to go back to the Photoshop Elements print dialog.

Using Red River Paper profiles with your Epson printer

Once back in the Photoshop Elements print dialog, verify your settings are still correct. You can now click print!

For more information go to <http://www.redriverpaper.com/profiles>

Email us: advice@redriverpaper.com

Call us: 888-248-8774