

## **Red River Satin Card – Handling Guide**

Red River Satin card is heavy at 290gsm, and thick at 12mil. As such, you will need to follow some guidelines for successful printing, handling, and storage.

### **Storage**

Keep unused paper in a closed box until ready for printing.

This paper is sensitive to humidity and may curl in some circumstances.

### **Handling**

Please try and avoid touching the surface of this paper before printing. Non-latex gloves can be worn to allow for better handling, especially if you are correcting any paper curl before printing.

If the paper curls when removed from the box, first consider ways to bring the relative humidity in your printing room to around 50% if possible.

Before feeding the sheet, give it a slight curl in the opposite direction to flatten it out as much as possible.

### **Printing Tips**

Set your card layout so that the photo side of your note card comes out of the printer first. You will want the outside back of the card (which usually contains text and a logo) to print last. This will minimize chances for head strikes and ink smudges on the edge of your card.

### **Drying Time**

After printing the first side, allow the paper to dry about 15 minutes before printing the second side. This minimizes the chance for scuffing.

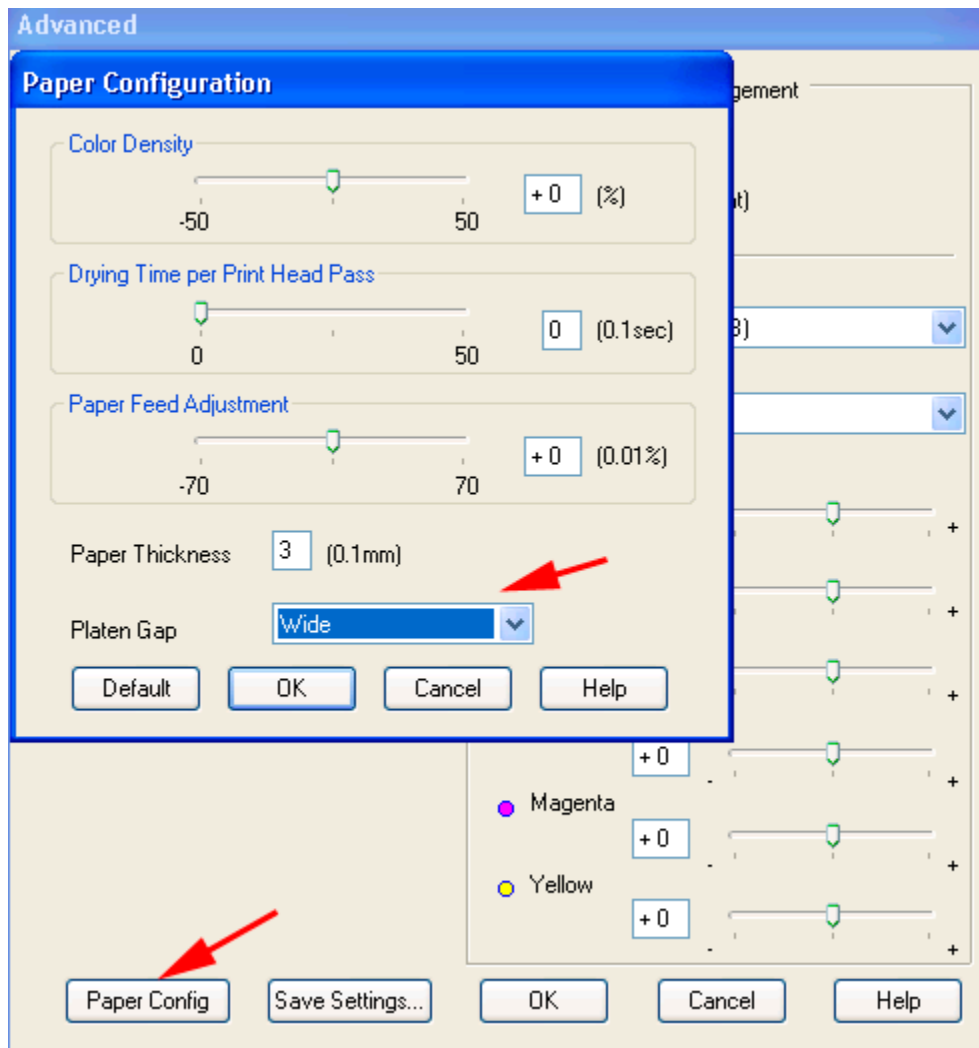
## Paper Feeding

We recommend feeding this paper into your printer one sheet at a time.

If your printer has features to help with extra thick paper printing, please use them with this paper. Some setting information is below.

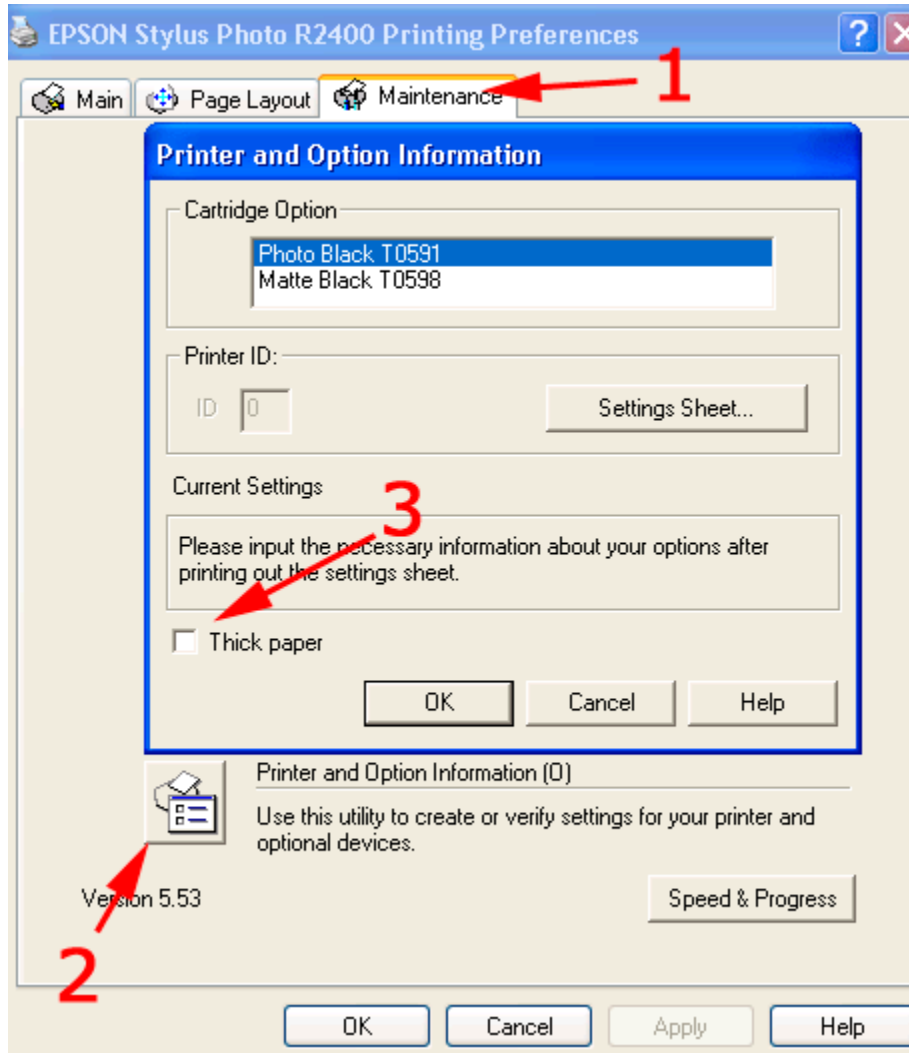
### **Epson Pro Printers**

Set the PLATEN GAP to Wide or Wider. See your printer manual for more about the settings.



## Epson Desktop Printers

Set the printer to Thick Paper. Go to the Maintenance tab in printer properties, click the Printer and Option Information button, then click the Thick Paper checkbox. Turn this off when you go back to standard thickness paper.



## Canon Desktop Printers

Set printer to Prevent Paper Abrasion. Go to the Maintenance Tab and click on Custom Settings. In the next menu, choose the Prevent Paper Abrasion option. Turn this off when you go back to standard thickness paper.

