

Profile Usage Instructions

For information on how to use color profiles, read Red River's "Color Profile Usage" and Epson's "How to use ICC profiles". These are available for download at www.redriverpaper.com/profiles

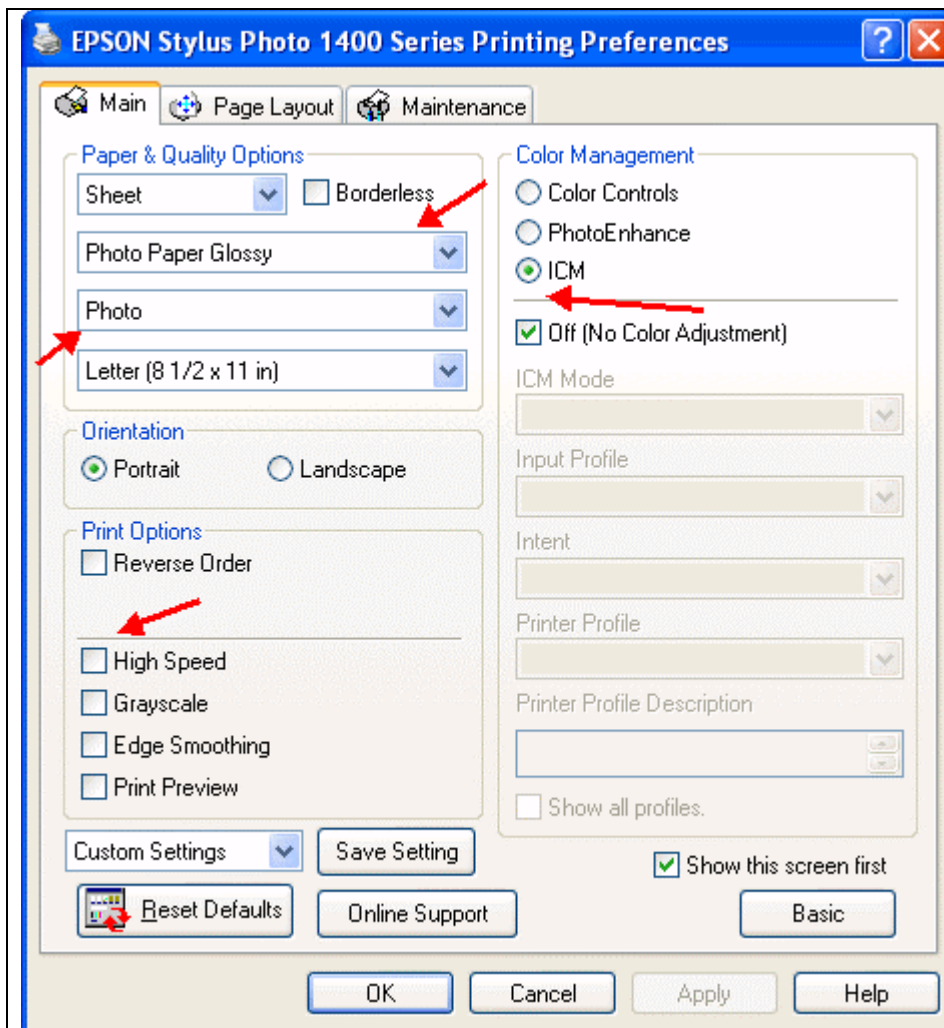
When you install the profile, it will show up in Photoshop's profile menu as:

RR Frio Gloss Ep1400 Claria.icc

Below are the required printer driver settings for this profile. You must make sure all of the settings are correct to achieve optimum print quality.

EPSON SETTINGS

Parameter	Required Setting
Paper Setting	Photo Paper Glossy
Quality	Photo
Color Management	Click ICM then Off (No Color Adjustment)



Epson PC driver screenshot showing the settings for this profile.

- 1 – Set suggested media type
- 2 – Color Adj to OFF
- 3 – Quality to Photo
- 4 – Profiles made for High Speed Printing OFF. The choice is optional for you.