

## Profile Usage Instructions

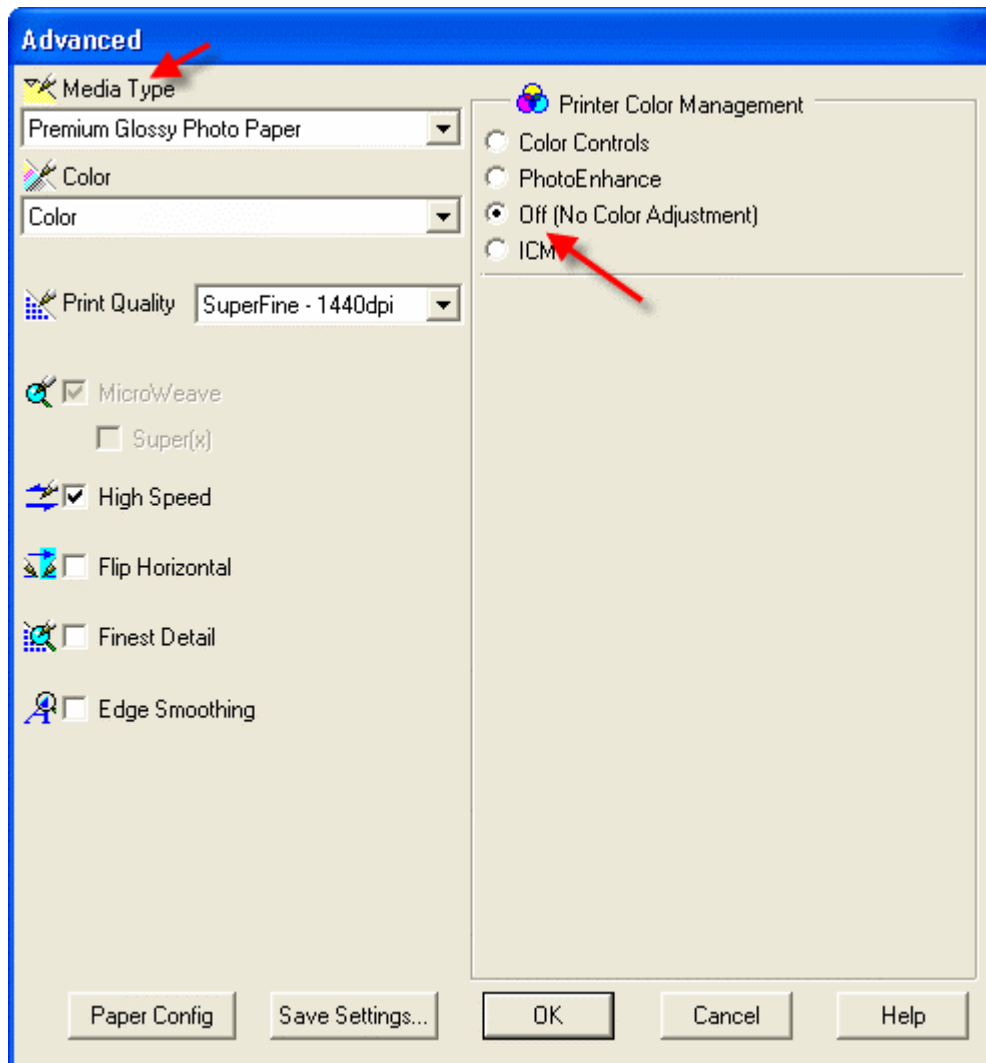
For information on how to use color profiles, read Red River's "Color Profile Usage" and Epson's "How to use ICC profiles". These are available for download at [www.redriverpaper.com/profiles](http://www.redriverpaper.com/profiles)

When you install the profile, it will show up in Photoshop's profile menu as:

### RR UPGloss 2.0 Ep7800\_9800 PK.icc

Below are the required printer driver settings for this profile. You must make sure all of the settings are correct to achieve optimum print quality.

<b>Parameter</b>	<b>Required Setting</b>
Paper Setting	Premium Glossy Photo Paper
Quality	Superfine - 1440dpi
Color Management	Click ICM then Off (No Color Adjustment)



- 1 – Set suggested media type
- 2 – Click ICM then check Off (No Color Adjustment)
- 3 – Quality set to Best Photo or better
- 4 – High speed, finest detail and edge smoothing are optional