

## Profile Usage Instructions

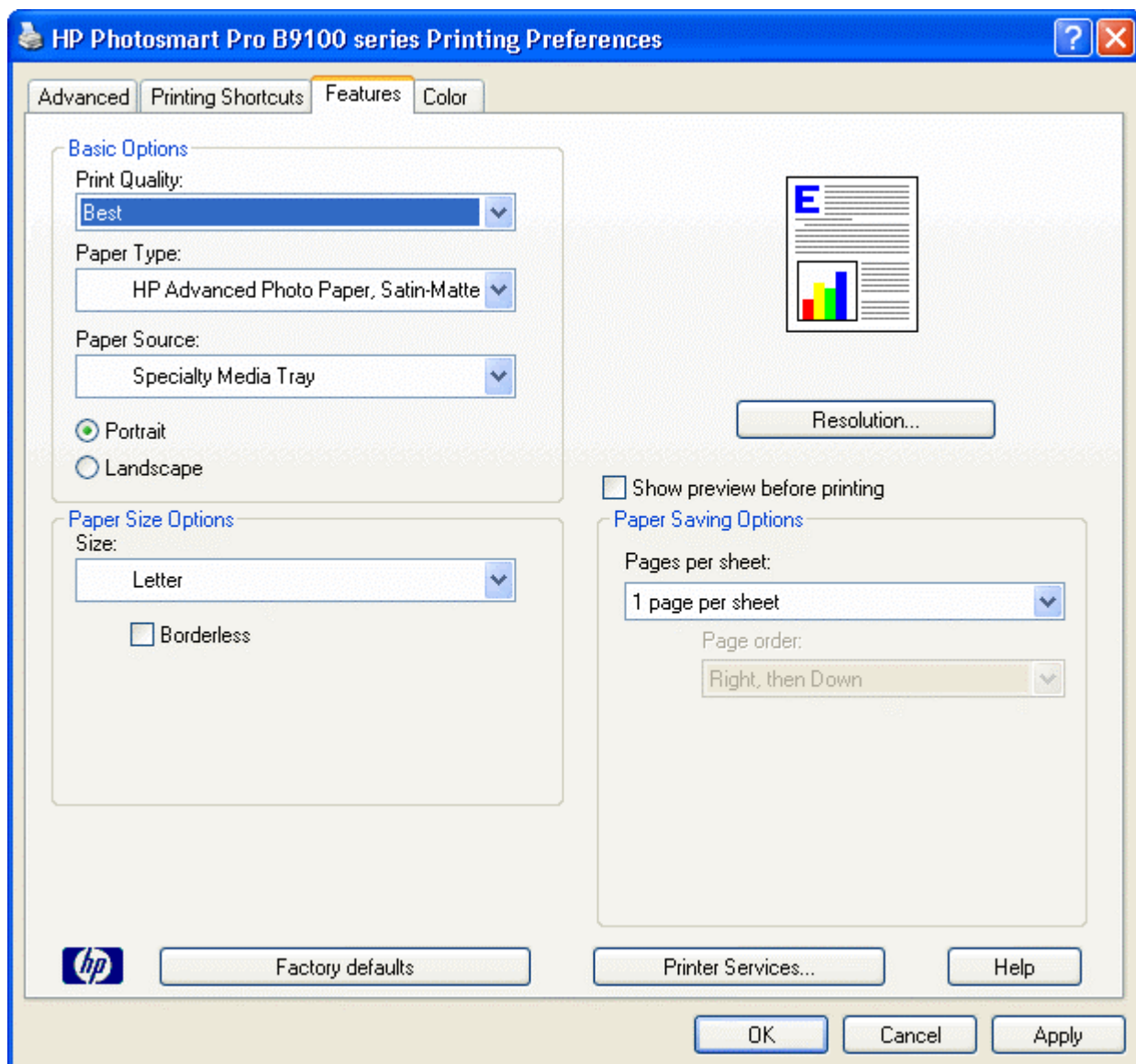
For information on how to use color profiles, read Red River's "Color Profile Usage" and Epson's "How to use ICC profiles". These are available for download at [www.redriverpaper.com/profiles](http://www.redriverpaper.com/profiles)

When you install the profile, it will show up in your software profile menu as:

**RR UPSatin 2.0 HP B9180 2.0.icc**

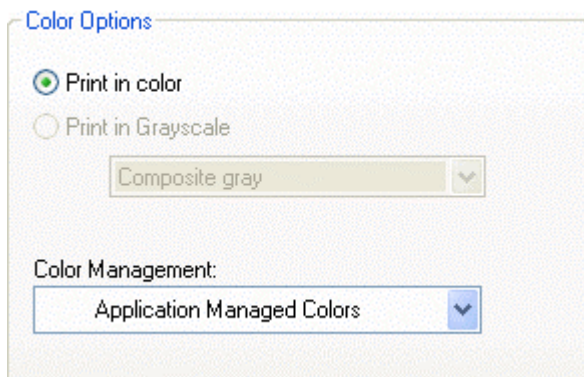
Below are the required printer driver settings for this profile. You must make sure all of the settings are correct to achieve optimum print quality.

Parameter	Required Setting
Paper Type	HP Advanced Photo Paper, Satin-Matte
Print Quality	Best



See next page

**Now click on the COLOR tab...**



Choose "Application Managed Colors" under Color Management