

Profile Usage Instructions

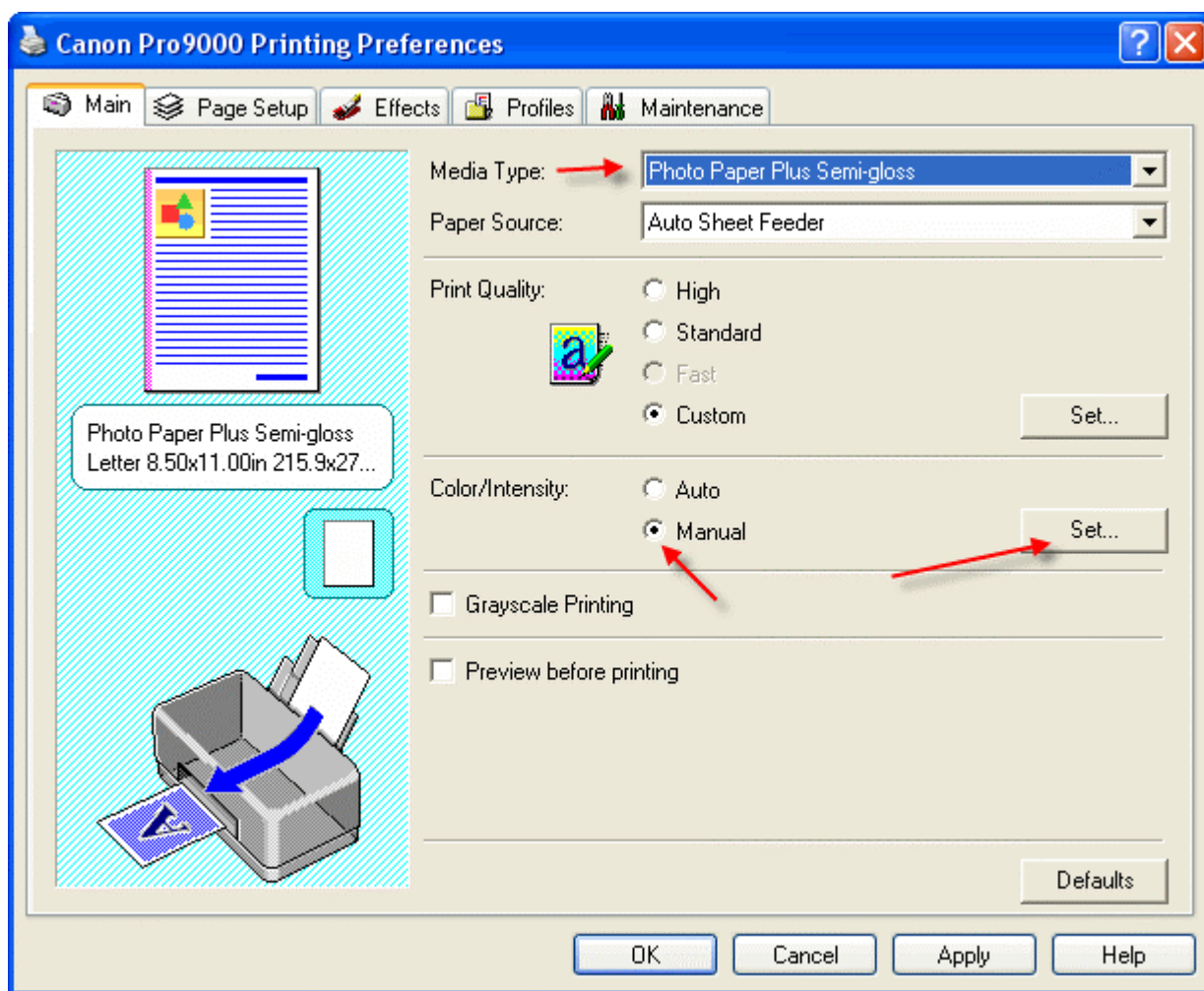
For information on how to use color profiles, read Red River's "Color Profile Usage" and Epson's "How to use ICC profiles". These are available for download at www.redriverpaper.com/profiles

When you install the profile, it will show up in your software profile menu as:

RR UPSatin 2.0 Can Pro9000icc

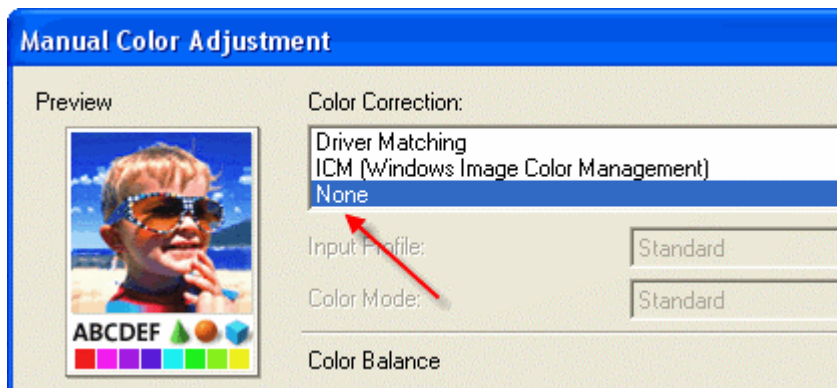
Below are the required printer driver settings for this profile. You must make sure all of the settings are correct to achieve optimum print quality.

Parameter	Required Setting
Paper Setting	Photo Paper Plus Semi-gloss
Quality	High
Color Adjustment	Click Manual then Set



Continued....

Manual Color Adjustment Menu



Set Color Correction to NONE and click OK