

## Profile Usage Instructions

### 50lb. RR SemiGloss Epson 2200

#### FOR USE WITH PHOTO BLACK INK

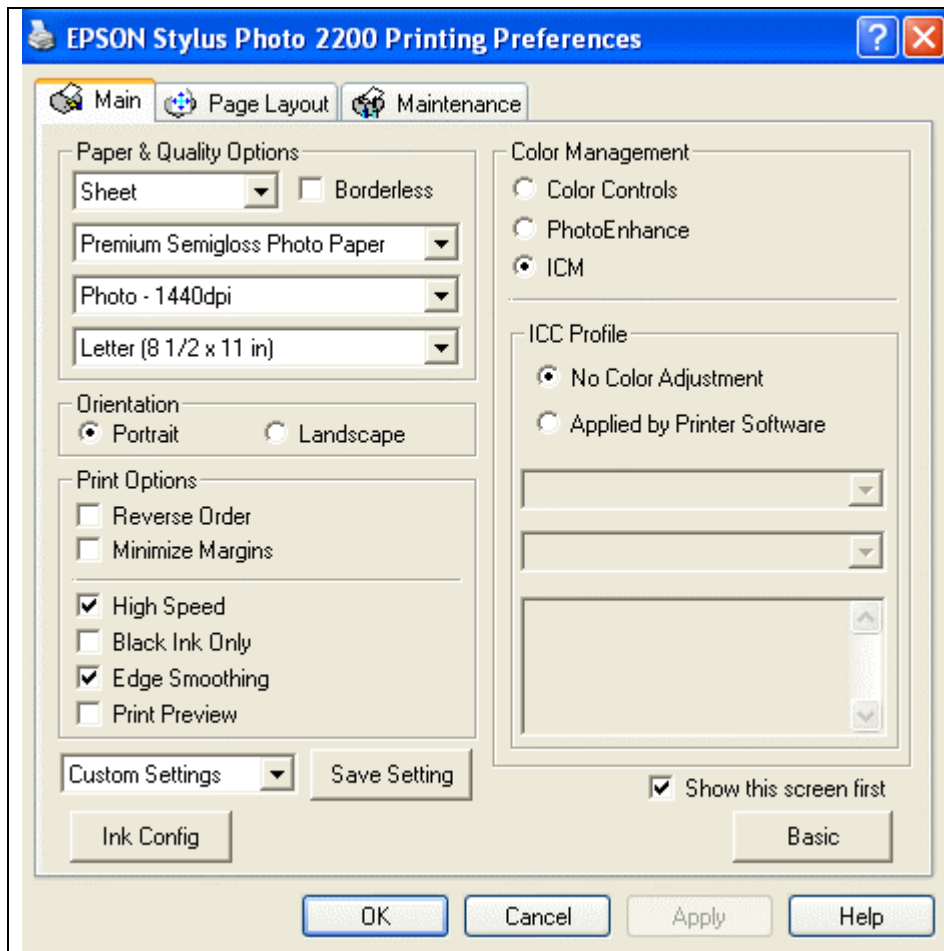
For information on how to use color profiles, read Red River's "Color Profile Usage" and Epson's "How to use ICC profiles". These are available for download at [www.redriverpaper.com/profiles](http://www.redriverpaper.com/profiles)

When you install the profile, it will show up in Photoshop's profile menu as:

#### RR SemiGloss Ep2200 1440dpi PK

Below are the required printer driver settings for this profile. You must make sure all of the settings are correct to achieve optimum print quality.

Parameter	Required Setting
Paper Setting	Epson Premium SemiGloss Photo Paper
Quality	Photo – 1440dpi
Color Management	Click ICM then No Color Adjustment
High Speed	ON
Edge Smoothing	User choice



**PC driver screenshot showing the settings for this profile.**

#### Special Notes:

High Speed – Turning high speed off should not effect the color balance or quality of the image

Edge Smoothing – Like high speed, you may experiment with this setting in the ON position

Refer to [www.redriverpaper.com/profiles](http://www.redriverpaper.com/profiles) for any updates. Technical support for color profiles is limited to the documents included in the profiles section of [www.redriverpaper.com](http://www.redriverpaper.com)

