

Profile Usage Instructions

For information on how to use color profiles, read Red River's "Color Profile Usage" and Epson's "How to use ICC profiles". These are available for download at www.redriverpaper.com/profiles

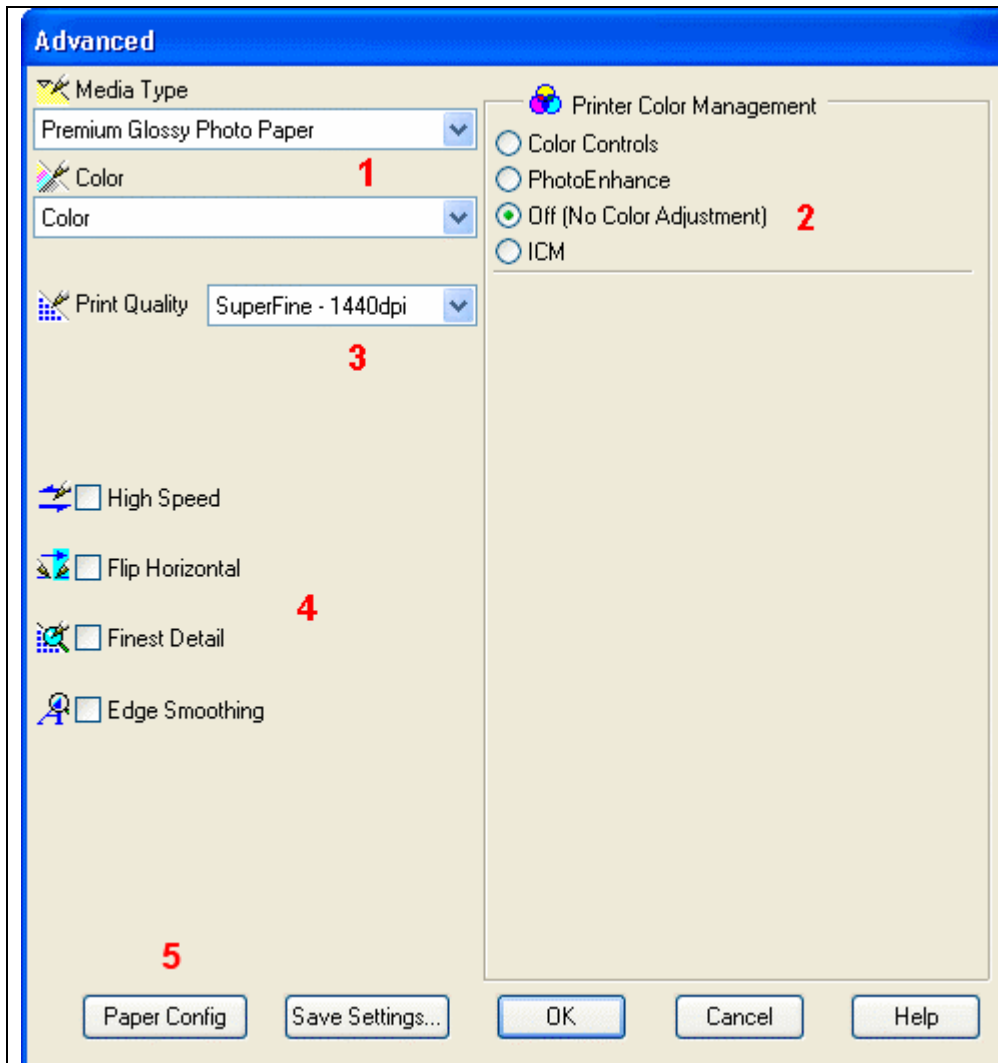
When you install the profile, it will show up in Photoshop's profile menu as:

RR LuxArt Satin Ep3800 PK.icc

Below are the required printer driver settings for this profile. You must make sure all of the settings are correct to achieve optimum print quality.

Driver Settings

Parameter	Required Setting
Paper Setting	Premium Glossy Photo Paper
Quality	SuperFine – 1440dpi
Color Management	Off (No Color Adjustment)
PAPER CONFIG	Set Platen Gap to WIDER



Epson PC driver screenshot showing the settings for this profile.

- 1 – Set suggested media type
- 2 – Color Adj to OFF
- 3 – Quality to 1440dpi
- 4 – All OFF
- 5 – Here set platen gap to WIDER

