

**MATTE BLACK VERSION**

**Profile Usage Instructions**  
**64lb. Aurora Art**

**Epson 4800 – Matte Black Ink**

For information on how to use color profiles, read Red River’s “Color Profile Usage” and Epson’s “How to use ICC profiles”. These are available for download at [www.redriverpaper.com/profiles](http://www.redriverpaper.com/profiles)

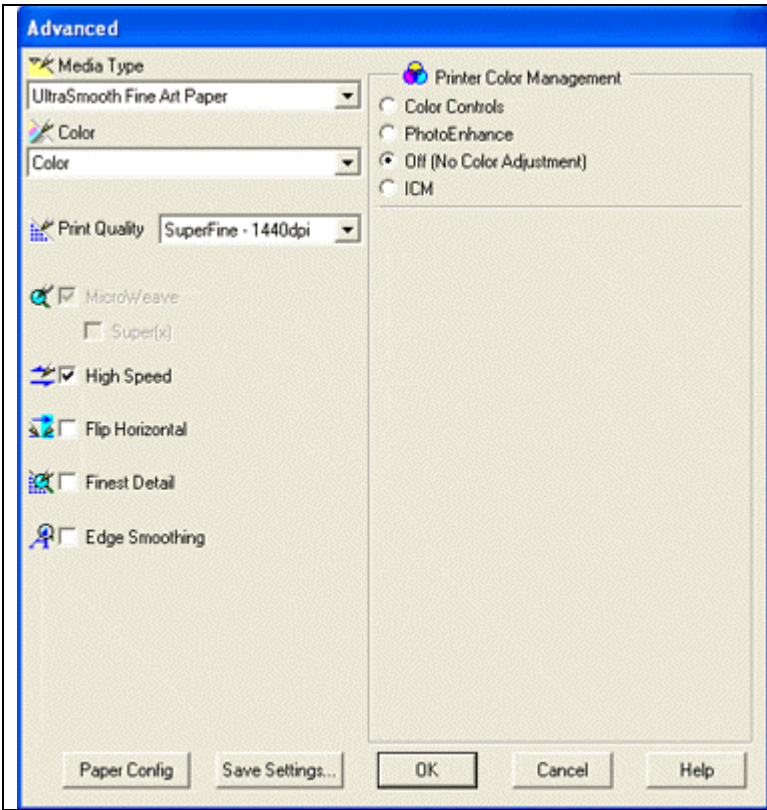
When you install the profile, it will show up in Photoshop’s profile menu as:

**RR Aurora Art Ep4800 Best Photo MK**

Below are the required printer driver settings for this profile. You must make sure all of the settings are correct to achieve optimum print quality.

The media setting below (UltraSmooth Fine Art) requires you to feed this paper in the manual slot. Refer to your manual for how this is accomplished.

Parameter	Required Setting
Paper Setting	UltraSmooth Fine Art Paper
Quality	Best Photo
Color Management	Off (No Color Adjustment)
High Speed	ON
Edge Smoothing	OFF



**PC driver screenshot showing the settings for this profile.**

**Special Notes:**

High Speed – Turning high speed off should not effect the color balance or quality of the image

Edge Smoothing – Like high speed, you may experiment with this setting in the ON position

Refer to [www.redriverpaper.com/profiles](http://www.redriverpaper.com/profiles) for any updates. Technical support for color profiles is limited to the documents included in the profiles section of [www.redriverpaper.com](http://www.redriverpaper.com)