

Profile Usage Instructions

- 50lb. Premium Matte
- 32lb. Premium Matte
- 37lb. Premium Matte

Epson 4800 – Matte Black Ink

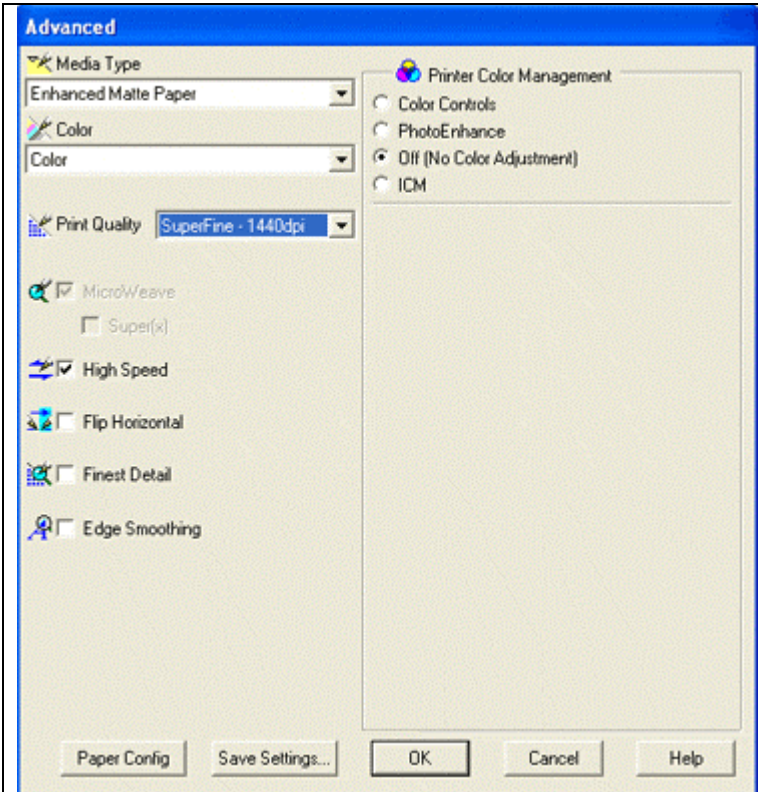
For information on how to use color profiles, read Red River’s “Color Profile Usage” and Epson’s “How to use ICC profiles”. These are available for download at www.redriverpaper.com/profiles

When you install the profile, it will show up in Photoshop’s profile menu as:

RR Premium Matte #A Ep4800 Best Photo MK

Below are the required printer driver settings for this profile. You must make sure all of the settings are correct to achieve optimum print quality.

Parameter	Required Setting
Paper Setting	Epson Enhanced Matte
Quality	Best Photo
Color Management	Off (No Color Adjustment)
High Speed	ON
Edge Smoothing	OFF



PC driver screenshot showing the settings for this profile.

Special Notes:

- High Speed – Turning high speed off should not effect the color balance or quality of the image
- Edge Smoothing – Like high speed, you may experiment with this setting in the ON position
- Refer to www.redriverpaper.com/profiles for any updates. Technical support for color profiles is limited to the documents included in the profiles section of www.redriverpaper.com