

**MATTE BLACK VERSION**

**Profile Usage Instructions**

**47lb. Premium Matte**

**65lb. Premium Matte**

**76lb. Premium Matte**

**Epson 4800 – Matte Black Ink**

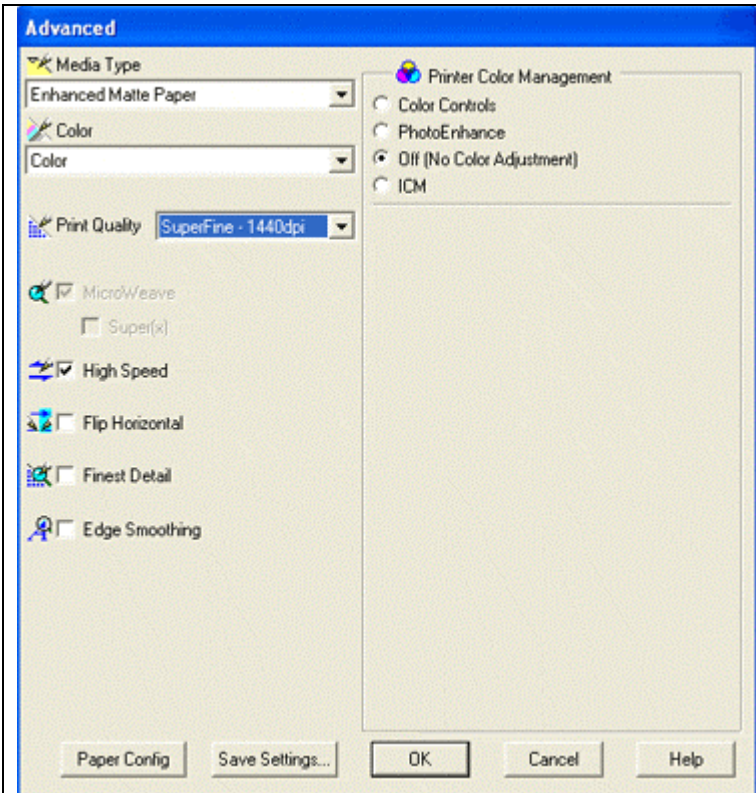
For information on how to use color profiles, read Red River’s “Color Profile Usage” and Epson’s “How to use ICC profiles”. These are available for download at [www.redriverpaper.com/profiles](http://www.redriverpaper.com/profiles)

When you install the profile, it will show up in Photoshop’s profile menu as:

**RR Premium Matte #B Ep4800 Best Photo MK**

Below are the required printer driver settings for this profile. You must make sure all of the settings are correct to achieve optimum print quality.

| Parameter        | Required Setting          |
|------------------|---------------------------|
| Paper Setting    | Epson Enhanced Matte      |
| Quality          | Best Photo                |
| Color Management | Off (No Color Adjustment) |
| High Speed       | ON                        |
| Edge Smoothing   | OFF                       |



**PC driver screenshot showing the settings for this profile.**

**Special Notes:**

- High Speed – Turning high speed off should not effect the color balance or quality of the image
- Edge Smoothing – Like high speed, you may experiment with this setting in the ON position
- Refer to [www.redriverpaper.com/profiles](http://www.redriverpaper.com/profiles) for any updates. Technical support for color profiles is limited to the documents included in the profiles section of [www.redriverpaper.com](http://www.redriverpaper.com)