

## Profile Usage Instructions

### Red River Aurora Art Canon i6600d (ChromaLife 100 inkset)

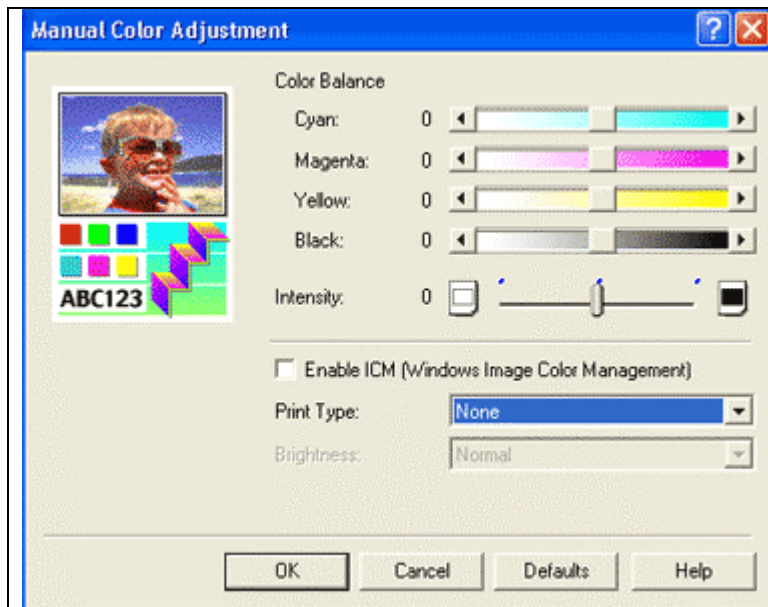
For information on how to use color profiles, read Red River's "Color Profile Usage" and Epson's "How to use ICC profiles".

When you install the profile, it will show up in your ICC aware application (ex. Photoshop) profile menu as:

#### RR Aurora Art Canon 6600d.icc

Below are the required printer driver settings for this profile. You must make sure all of the settings are correct to achieve optimum print quality.

Parameter	Required Setting
Paper Setting	Glossy Photo Paper
Quality	Fine
Color Management	Manual Color Adjustment – Print Type Set to "None"



From the MAIN tab in printer properties – click the Manual button under Color/Intensity

Now at the **Manual Color Adjustment Screen**

Set print type to "None" in order to use ICC profile

Refer to [www.redriverpaper.com/profiles](http://www.redriverpaper.com/profiles) for any updates. Technical support for color profiles is limited to the documents included in the profiles section of [www.redriverpaper.com](http://www.redriverpaper.com)

### Special Notes:

Refer to [www.redriverpaper.com/profiles](http://www.redriverpaper.com/profiles) for any updates. Technical support for color profiles is limited to the documents included in the profiles section of [www.redriverpaper.com](http://www.redriverpaper.com)