

## PROFILE INSTRUCTIONS

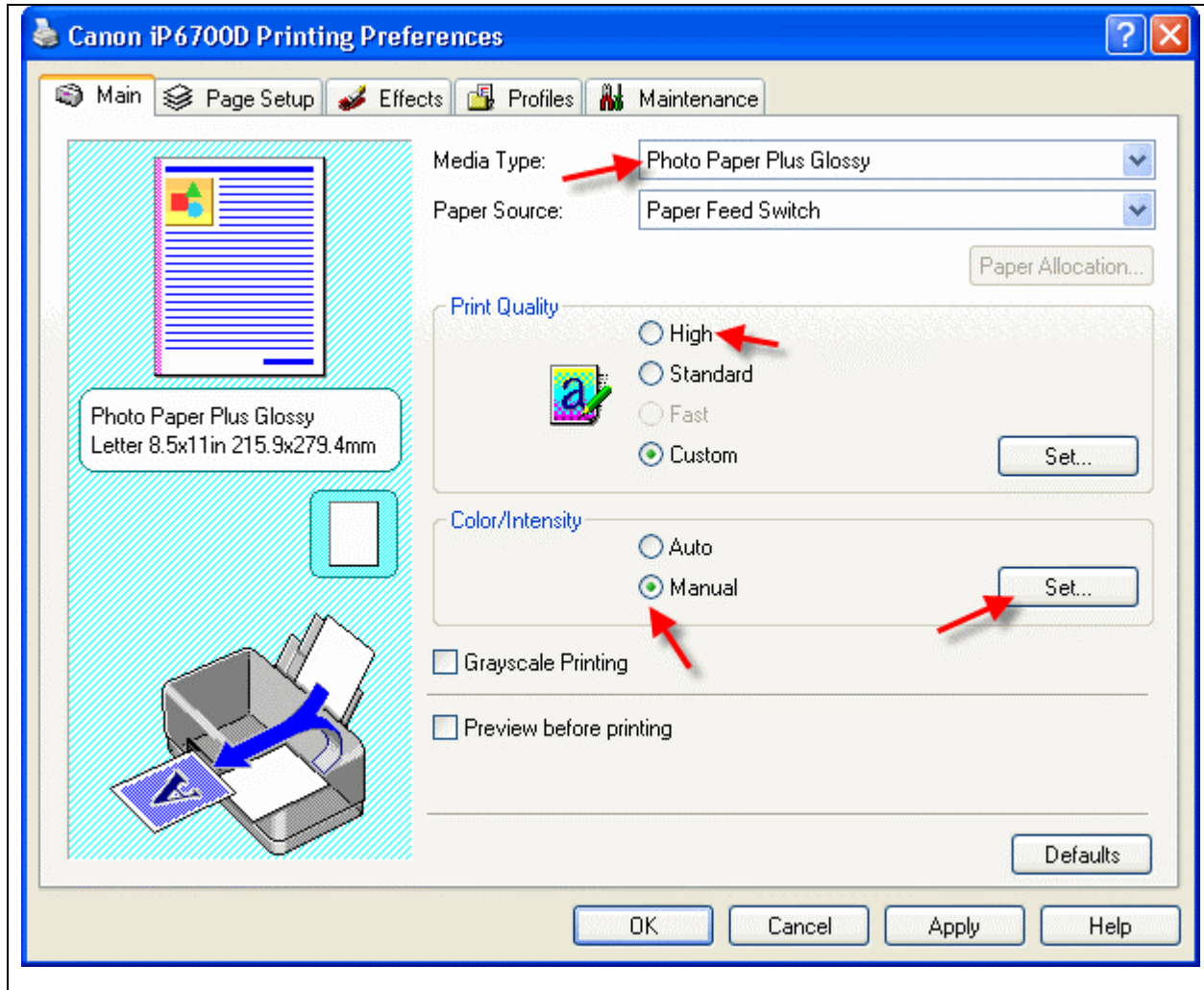
For information on how to use color profiles, read Red River's "Color Profile Usage" and Epson's "How to use ICC profiles".

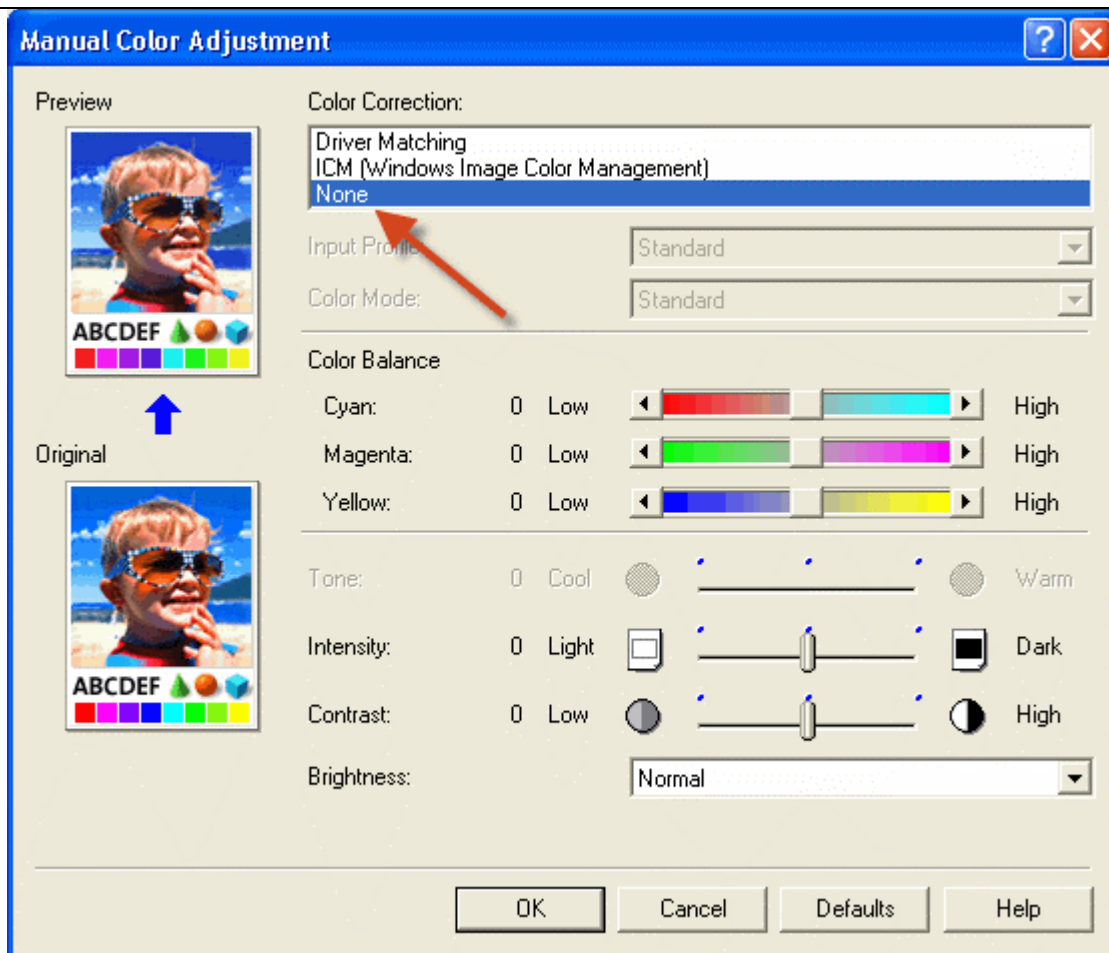
When you install the profile, it will show up in your ICC aware application (ex. Photoshop) profile menu as:

### RR UPGloss Can ip6700\_6600.icc

Below are the required printer driver settings for this profile. You must make sure all of the settings are correct to achieve optimum print quality.

Parameter	Required Setting
Paper Setting	Photo Paper Plus Glossy
Quality	Fine or High
Color Management	Manual Color Adjustment – Print Type Set to "None"





Set Color Correction to None

### Special Notes:

Refer to [www.redriverpaper.com/profiles](http://www.redriverpaper.com/profiles) for any updates. Technical support for color profiles is limited to the documents included in the profiles section of [www.redriverpaper.com](http://www.redriverpaper.com)