

MATTE BLACK VERSION

Profile Usage Instructions
64lb. Aurora Art

Epson 7800/9800 – Matte Black Ink

For information on how to use color profiles, read Red River’s “Color Profile Usage” and Epson’s “How to use ICC profiles”. These are available for download at www.redriverpaper.com/profiles

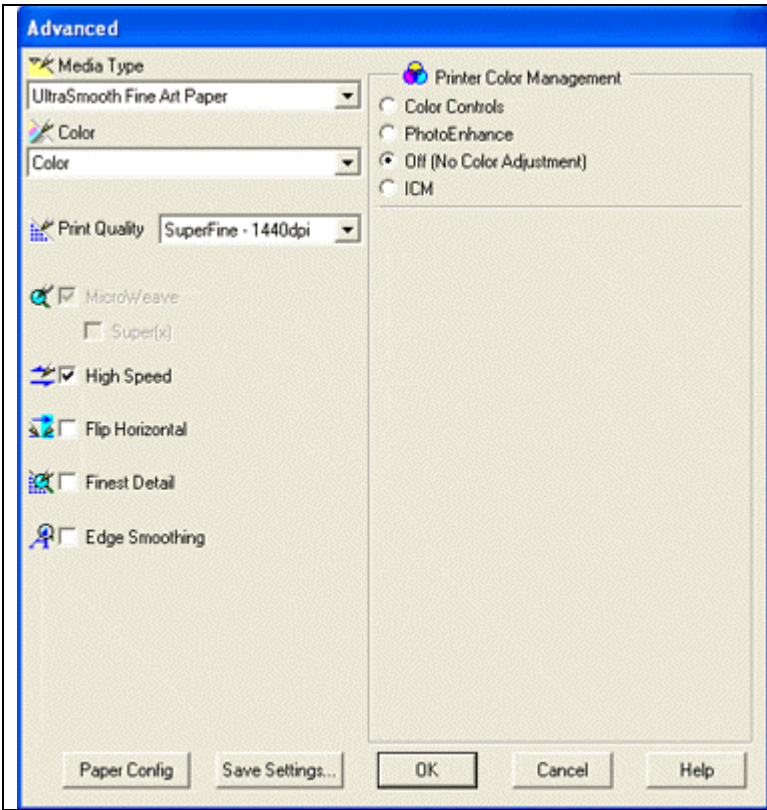
When you install the profile, it will show up in Photoshop’s profile menu as:

RR Aurora Art Ep7800/9800 Best Photo MK

Below are the required printer driver settings for this profile. You must make sure all of the settings are correct to achieve optimum print quality.

The media setting below (UltraSmooth Fine Art) requires you to feed this paper in the manual slot. Refer to your manual for how this is accomplished.

| Parameter | Required Setting |
|------------------|----------------------------|
| Paper Setting | UltraSmooth Fine Art Paper |
| Quality | Best Photo |
| Color Management | Off (No Color Adjustment) |
| High Speed | ON |
| Edge Smoothing | OFF |



PC driver screenshot showing the settings for this profile.

Special Notes:

High Speed – Turning high speed off should not effect the color balance or quality of the image

Edge Smoothing – Like high speed, you may experiment with this setting in the ON position

Refer to www.redriverpaper.com/profiles for any updates. Technical support for color profiles is limited to the documents included in the profiles section of www.redriverpaper.com