

Profile Usage Instructions

Red River 68lb. UltraPro Gloss (Photo black ink)
Epson 7800/9800

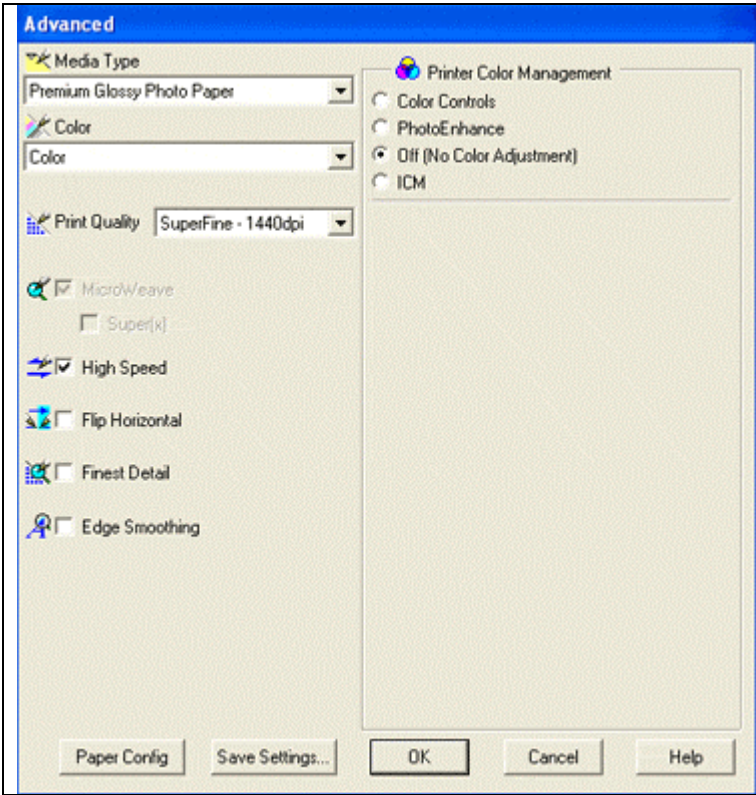
For information on how to use color profiles, read Red River’s “Color Profile Usage” and Epson’s “How to use ICC profiles”. These are available for download at www.redriverpaper.com/profiles

When you install the profile, it will show up in Photoshop’s profile menu as:

RR UltraPro Gloss Ep7800/9800 Best Photo

Below are the required printer driver settings for this profile. You must make sure all of the settings are correct to achieve optimum print quality.

| Parameter | Required Setting |
|------------------|----------------------------------|
| Paper Setting | Epson Premium Glossy Photo Paper |
| Quality | Best Photo |
| Color Management | Off (No Color Adjustment) |
| High Speed | ON |
| Edge Smoothing | OFF |



PC driver screenshot showing the settings for this profile.

Special Notes:

High Speed – Turning high speed off should not effect the color balance or quality of the image
Edge Smoothing – Like high speed, you may experiment with this setting in the ON position

Refer to www.redriverpaper.com/profiles for any updates. Technical support for color profiles is limited to the documents included in the profiles section of www.redriverpaper.com