

Profile Usage Instructions

Canon iPF5000

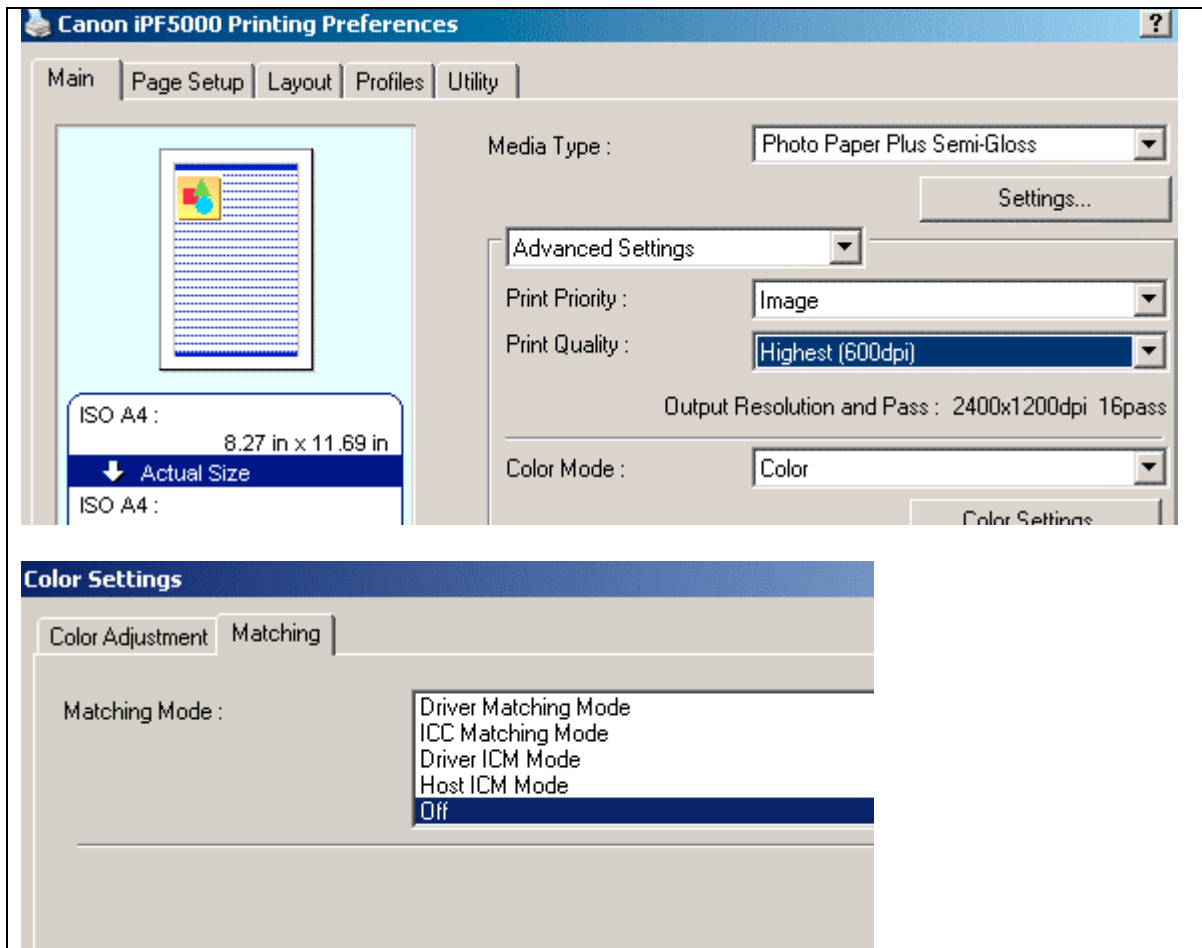
For information on how to use color profiles, read Red River's "Color Profile Usage" and Epson's "How to use ICC profiles". These are available for download at www.redriverpaper.com/profiles

When you install the profile, it will show up in Photoshop's profile menu as:

RR Arc Pol Sat iPF5000 Bst.icc

Below are the required printer driver settings for this profile. You must make sure all of the settings are correct to achieve optimum print quality.

Parameter	Required Setting
Media Type	Photo Paper Plus Semi-Gloss
Print Quality	Highest (600dpi)
Color Mode	Under "Color Settings" menu, click on "Matching" tab - set Matching Mode to "OFF"



Refer to www.redriverpaper.com/profiles for any updates. Technical support for color profiles is limited to the documents included in the profiles section of www.redriverpaper.com