



Printer Color Profile Instructions

Color profiles are data files that contain a description of how a particular paper, ink, and printer create all colors, shades, and densities. Using a profile will result in more accurate and consistent output.

Printer: Canon G620

Support

How to install profiles

www.redriverpaper.com/installprofiles

How to use profiles

www.redriverpaper.com/useprofiles

Some Hints



The name of the paper you are using will not be listed in the media setting drop down menu in the printer driver. That menu only has the names of manufacturer papers.

Do not use the printer driver's "Preview before printing feature". It can interrupt the color management process.

Turn on your printer's thick paper setting when using heavy weight papers.

MAC USER NOTICE

Mac

Canon does not support the G620 with a driver. Instead, they fall back to Apple AirPrint, which does not allow for application managed colors.

What does this mean?

It means you cannot use color profiles provided by Red River Paper or other paper brands.

What can I do?

You can allow the printer to manage colors. Use the recommended media settings on page two of this document. There are no workarounds.

MEDIA SETTING RECOMMENDATIONS

These are the media setting you select in the printer driver. See below for examples of what that looks like on your computer.

Paper	Media Setting	Special
68lb. UltraPro Gloss	Photo Paper Plus Glossy II	
60lb. & 42lb. Pecos River Gloss	Photo Paper Plus Glossy II	
96lb. Pecos River Gloss	Photo Paper Plus Glossy II	
86lb. Pecos River Gloss Duo	Photo Paper Plus Glossy II	
Premium Gloss	Glossy Photo Paper	
UltraPro Luster 300	Photo Paper Pro Luster	
UltraPro SemiGloss Duo 255	Photo Paper Plus Semi-gloss	
68lb. UltraPro Satin 4.0	Photo Paper Pro Luster	
66lb. Palo Duro Satin	Photo Paper Pro Luster	
66lb. Arctic Polar Satin	Photo Paper Pro Luster	
Arctic Polar Luster – All Weights	Photo Paper Pro Luster	
Polar Metallic Papers	Photo Paper Plus Glossy II	
Premium Matte – All Weights	Matte Photo Paper	
60lb. Polar Matte / Double Sided	Matte Photo Paper	
88lb. Polar Matte	Matte Photo Paper	
60lb. River Linen 2.0	Matte Photo Paper	
60lb. Paper Canvas	Matte Photo Paper	
Big Bend Baryta 310	Premium Photo Paper Semi-gloss	
Aurora Art White	Premium Rough Fine Art	
Aurora Art Natural	Premium Rough Fine Art	

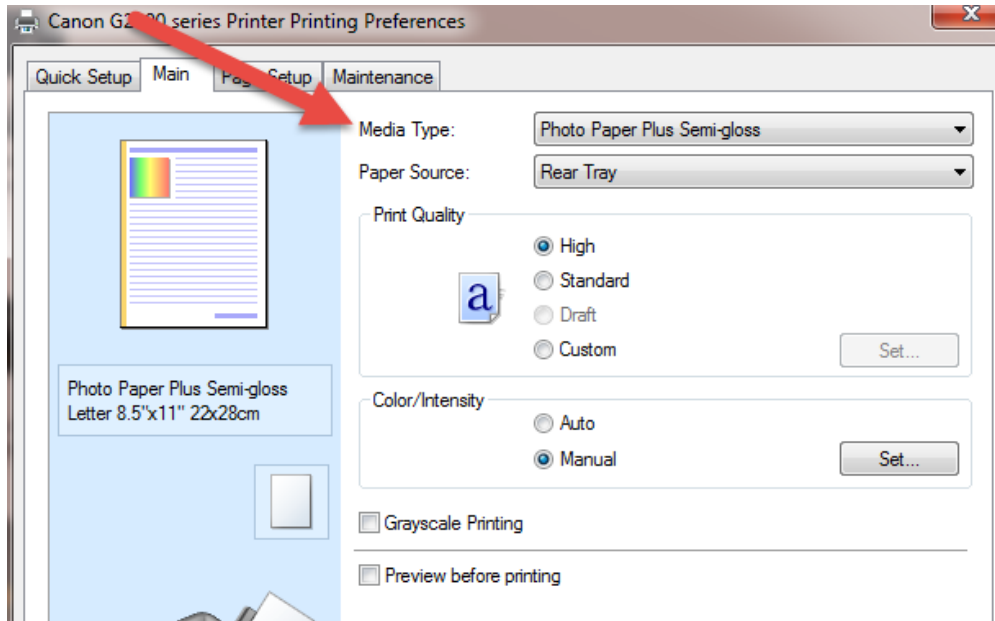
Full instructions for using printer profiles are on our website:

www.redriverpaper.com/useprofiles

Where does the Media / Paper Type go?

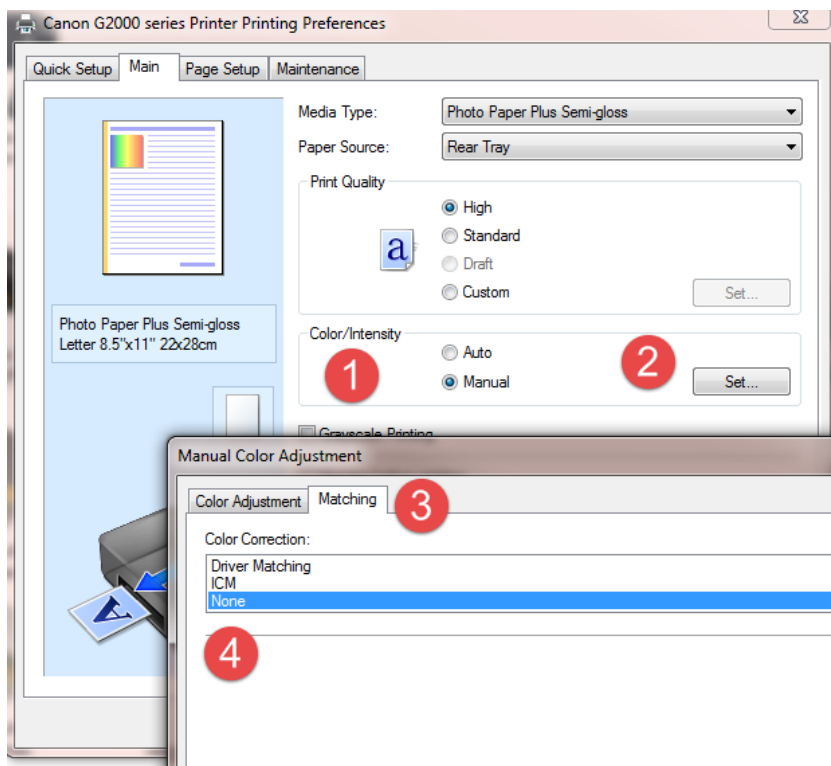
Using the above table, find the media type we recommend using when printing with a profile. Then select it in the printer driver dialog. See below for examples.

The Printing Preferences dialog is your access to the printer driver. Click on the Paper Type drop down menu and choose the correct setting. NOTE: You need to do this or verify it is accurate each time you print!



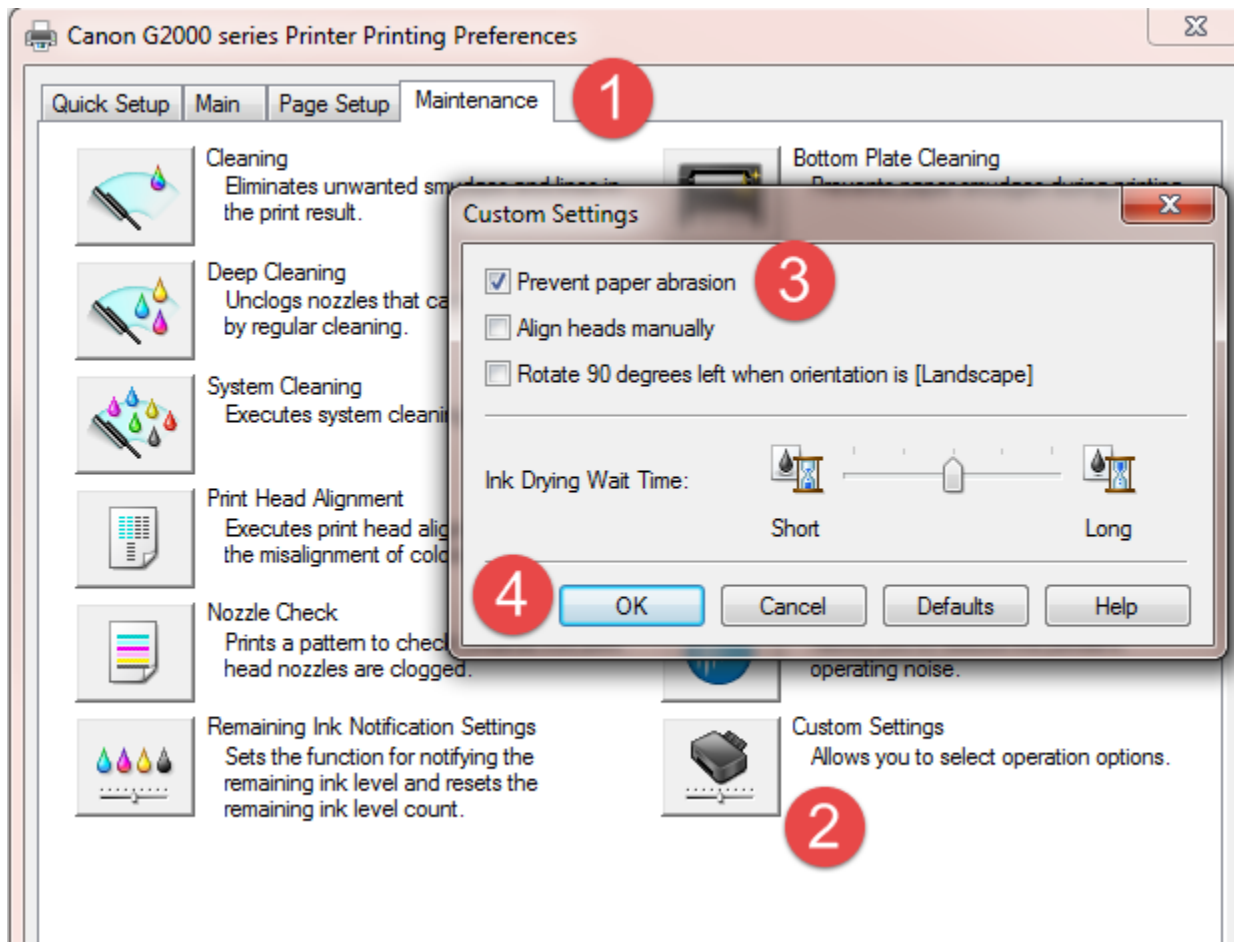
How to Turn off the Printer's Color Management?

Color / Intensity : Manual > Set > Matching Tab > Color Correction: None



Windows - Thick Paper Setting

In the Printer Properties
Maintenance tab > Custom Settings > Prevent Paper Abrasion



Handling Guides

Check our website to see if your paper has a Handling Guide. Guides contain important information and helpful tips. www.redriverpaper.com/guides

Further Help

Go to <http://www.redrivercatalog.com/infocenter/> for more help with driver settings and more.