



Printer Color Profile Instructions

Color profiles are data files that contain a description of how a particular paper, ink, and printer create all colors, shades, and densities. Using a profile will result in more accurate and consistent output.

Printer: Canon G5020 G6020 G7020

Support


How to install profiles

www.redriverpaper.com/installprofiles

How to use profiles

www.redriverpaper.com/useprofiles

Some Hints

 The name of the paper you are using will not be listed in the media setting drop down menu in the printer driver. That menu only has the names of manufacturer papers.

Do not use the printer driver's "Preview before printing feature". It can interrupt the color management process. Turn on your printer's thick paper setting when using heavy weight papers.

MAC USER NOTICE

Mac

Canon does not support the GX020 with a driver. Instead, they fall back to Apple AirPrint, which does not allow for application managed colors.

What does this mean?

It means you cannot use color profiles provided by Red River Paper or other paper brands.

What can I do?

You can allow the printer to manage colors. Use the recommended media settings on page two of this document. There are no workarounds.

MEDIA SETTING RECOMMENDATIONS

These are the media setting you select in the printer driver. See below for examples of what that looks like on your computer.

| Paper | Media Setting | Special |
|--|----------------------------|---------|
| 68lb. UltraPro Gloss | Photo Paper Plus Glossy II | |
| 60lb. & 42lb. Pecos River Gloss | Photo Paper Plus Glossy II | |
| Premium Gloss | Glossy Photo Paper | |
| UltraPro Luster 300 | Photo Paper Pro Luster | |
| UltraPro SemiGloss Duo 255 | Photo Paper Pro Luster | |
| 68lb. UltraPro Satin 4.0 | Photo Paper Pro Luster | |
| 66lb. Palo Duro Satin | Photo Paper Pro Luster | |
| 66lb. Arctic Polar Satin | Photo Paper Pro Luster | |
| Arctic Polar Luster – All Weights | Photo Paper Pro Luster | |
| Polar Metallic Papers | Photo Paper Plus Glossy II | |
| Premium Matte – All Weights | Matte Photo Paper | |
| 60lb. Polar Matte / Double Sided | Matte Photo Paper | |
| 60lb. River Linen | Matte Photo Paper | |
| 60lb. Paper Canvas | Matte Photo Paper | |
| Aurora Art White 250 | Matte Photo Paper | |
| Aurora Art Natural 250 | Matte Photo Paper | |

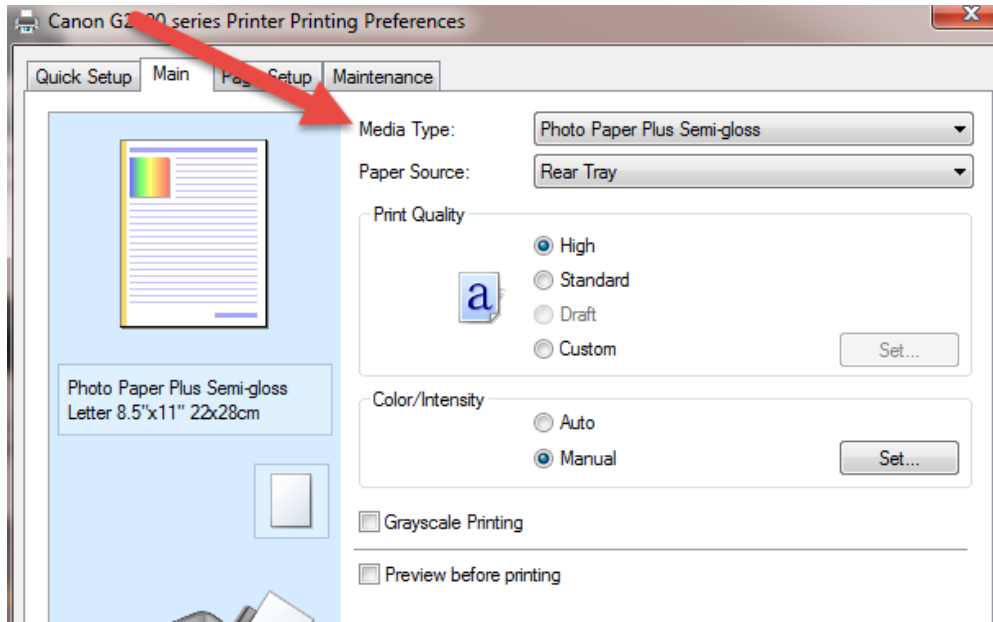
Full instructions for using printer profiles are on our website:

www.redriverpaper.com/useprofiles

Where does the Media / Paper Type go?

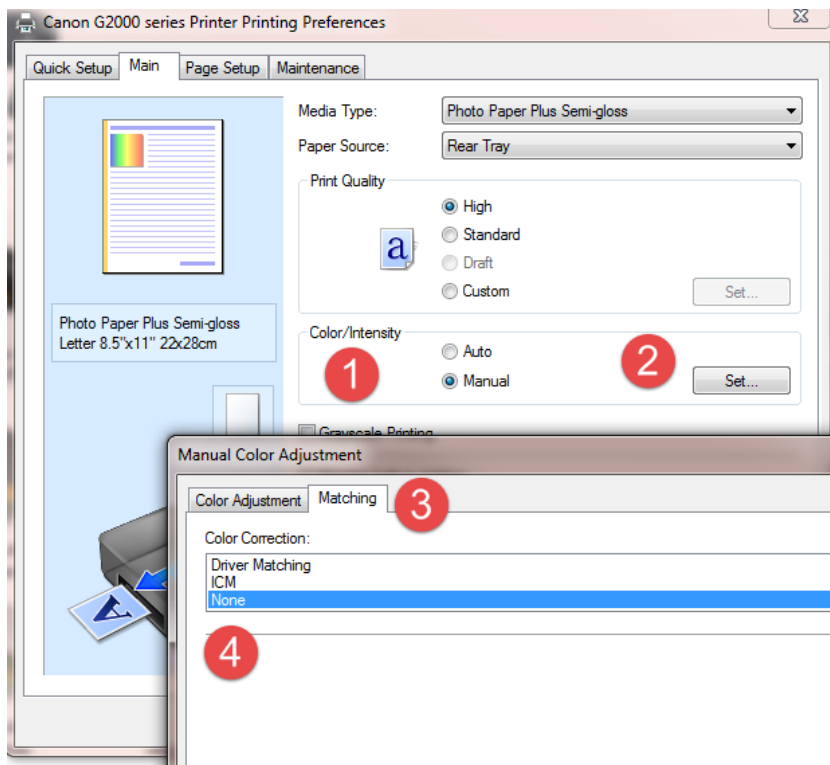
Using the above table, find the media type we recommend using when printing with a profile. Then select it in the printer driver dialog. See below for examples.

The Printing Preferences dialog is your access to the printer driver. Click on the Paper Type drop down menu and choose the correct setting. NOTE: You need to do this or verify it is accurate each time you print!



How to Turn off the Printer's Color Management?

Color / Intensity : Manual > Set > Matching Tab > Color Correction: None



Windows - Thick Paper Setting

In the Printer Preferences

Maintenance tab > Custom Settings > Prevent Paper Abrasion

Printer device

Offline

Online

Set as default

Printer status

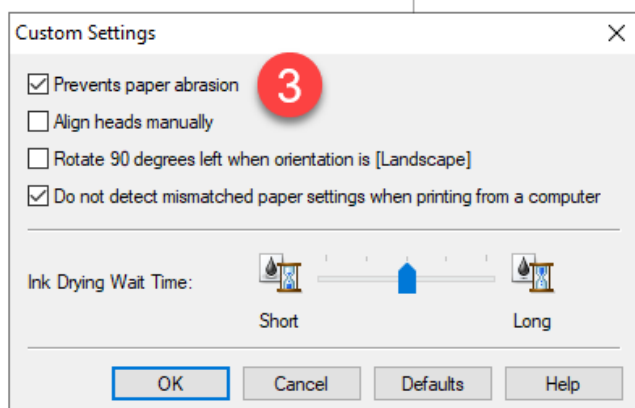
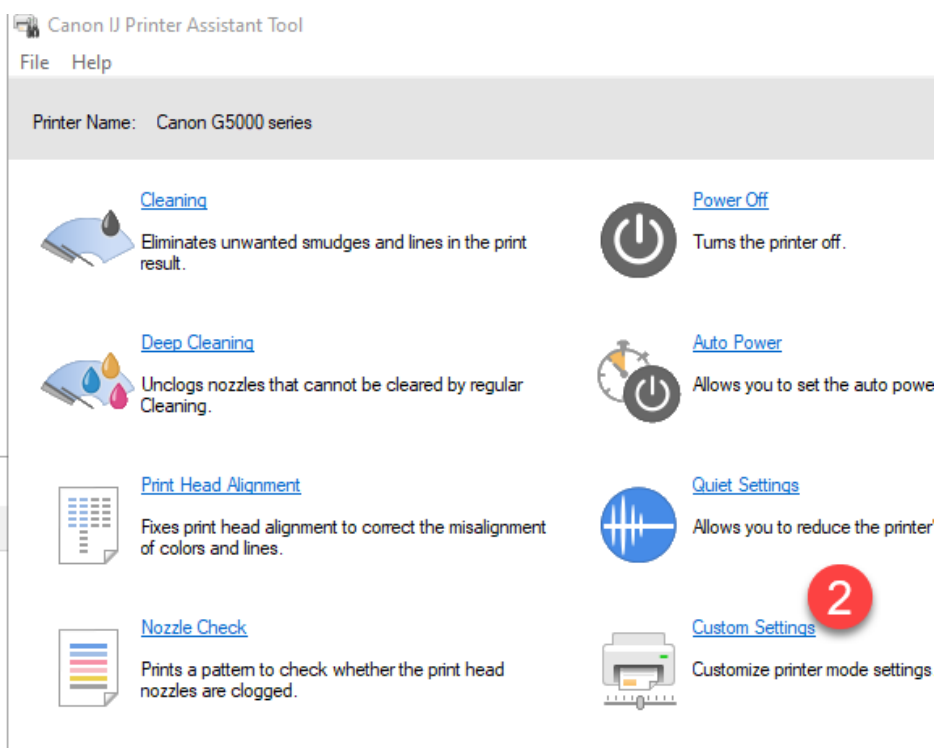
Printer name

Canon G5000 series Printing Preferences

Quick Setup Main Page Setup Maintenance



Maintenance and Preferences
Performs maintenance, such as print head cleaning, and changes the printer settings.



Handling Guides

Check our website to see if your paper has a Handling Guide. Guides contain important information and helpful tips. www.redriverpaper.com/guides

Further Help

Go to <http://www.redrivercatalog.com/infocenter/> for more help with driver settings and more.