



Printer Color Profile Instructions

Color profiles are data files that contain a description of how a particular paper, ink, and printer create all colors, shades, and densities. Using a profile will result in more accurate and consistent output.

Printer: Canon TS9100 Series

Setting Recommendations

Manual Color Adjustment Matching: None

Print Quality: Custom / High

Support


How to install profiles

www.redriverpaper.com/installprofiles

How to use profiles

www.redriverpaper.com/useprofiles

Some Hints

 The name of the paper you are using will not be listed in the media setting drop down menu in the printer driver. That menu only has the names of manufacturer papers.

Do not use the printer driver's "Preview before printing feature". It can interrupt the color management process.

THICK / HEAVY PAPERS

Prevent Paper Abrasion – This is Canon's way of saying "thick paper setting". Activating it will raise the print head slightly and help you avoid head strikes. *See page 3 for details.*

Top paper tray – We recommend you use the top paper tray for all but the lightest weight inkjet papers.

Contact Red River Paper

support@redriverpaper.com

888-248-8774

MEDIA SETTING RECOMMENDATIONS

Paper	Media Setting	Special
68lb. UltraPro Gloss 2.0	Photo Paper Plus Glossy II	
Polar Metallic Papers	Photo Paper Plus Glossy II	
60lb. & 42lb. Pecos River Gloss	Photo Paper Plus Glossy II	
96lb. Pecos River Gloss Magna	Photo Paper Plus Glossy II	Prevent Paper Abrasion
86lb. Pecos River Gloss Duo	Photo Paper Plus Glossy II	Prevent Paper Abrasion
32lb. Premium Gloss	Glossy Photo Paper	
68lb. UltraPro Satin 4.0	Photo Paper Plus Semi-Gloss	
UltraPro Luster 300	Photo Paper Plus Semi-Gloss	Use UltraPro Satin profile
66lb. Palo Duro Satin	Photo Paper Plus Semi-Gloss	
66lb. Arctic Polar Satin	Photo Paper Pro Luster	
Arctic Polar Luster – All Weights	Photo Paper Pro Luster	
Premium Matte Papers – All Weights	Matte Photo Paper	
60lb. Polar Matte / Double Sided	Matte Photo Paper	
88lb. Polar Matte Magna	Matte Photo Paper	Prevent Paper Abrasion
60lb. River Linen 2.0	Matte Photo Paper	
60lb. Paper Canvas	Matte Photo Paper	
Aurora Art Natural	Matte Photo Paper	Prevent Paper Abrasion
Aurora Art White	Matte Photo Paper	Prevent Paper Abrasion
San Gabriel Baryta SemiGloss 2.0	Photo Paper Pro Luster	Prevent Paper Abrasion

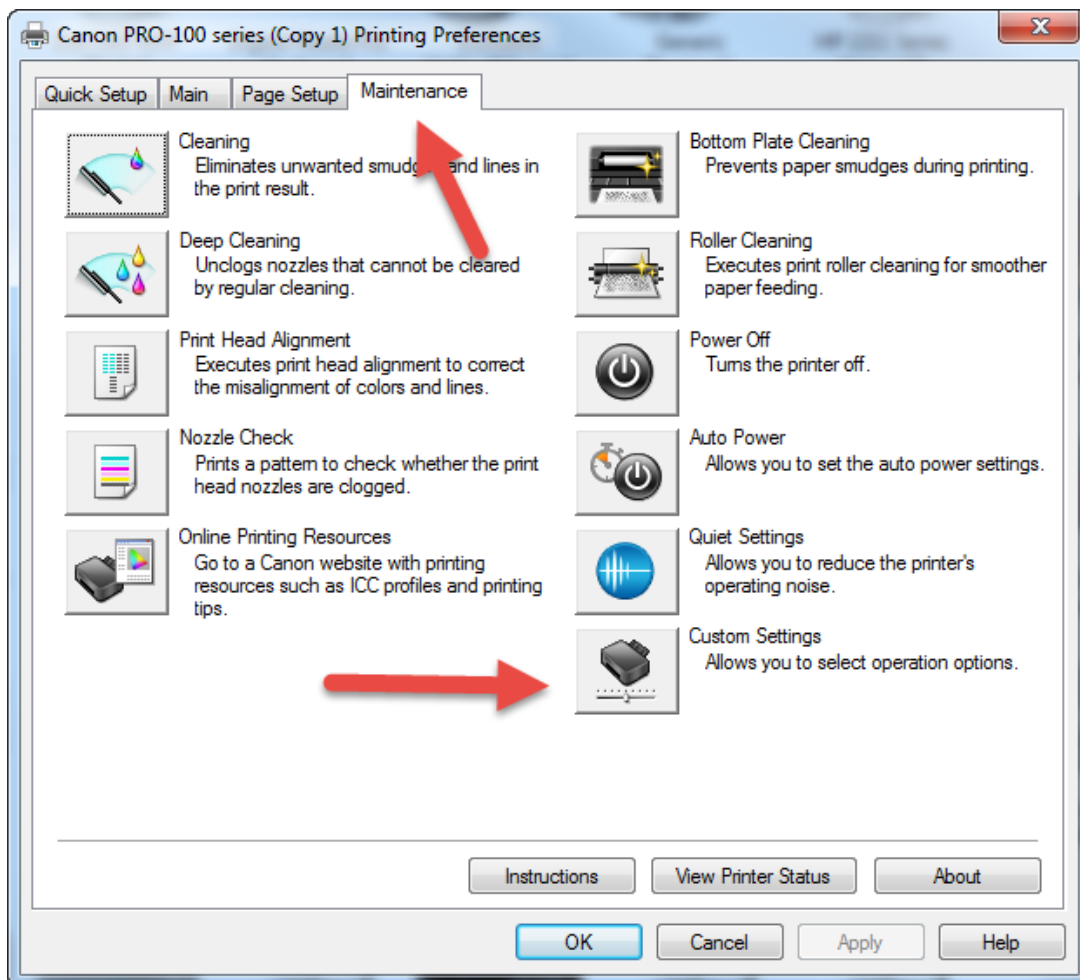
Handling Guides

Check our website to see if your paper has a Handling Guide. Guides contain important information and helpful tips. www.redriverpaper.com/guides

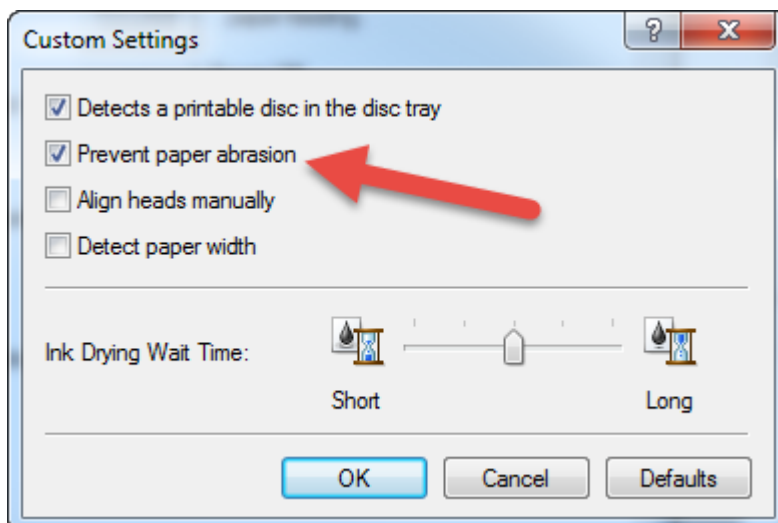
Thick Paper Setup

Windows

Go to the Maintenance Tab and click Custom Settings



In the Custom Settings dialog, locate and check the "Prevent paper abrasion" box



Mac

Go to SYSTEM PREFERENCES > PRINT & FAX

Locate your printer in the Print & Fax menu and click UTILITY

In the printer utility go to the CUSTOM SETTINGS menu

Click the PREVENT PAPER ABRASION check box and click SEND

Note: Your printer will most likely need to be turned on and connected.

