



## Printer Color Profile Instructions

Color profiles are data files that contain a description of how a particular paper, ink, and printer create all colors, shades, and densities. Using a profile will result in more accurate and consistent output.

**Printer:** Canon TS9100 Series

### Setting Recommendations

Manual Color Adjustment Matching: None

Print Quality: Custom / High

### Support


How to install profiles

[www.redriverpaper.com/installprofiles](http://www.redriverpaper.com/installprofiles)

How to use profiles

[www.redriverpaper.com/useprofiles](http://www.redriverpaper.com/useprofiles)

### Some Hints

 The name of the paper you are using will not be listed in the media setting drop down menu in the printer driver. That menu only has the names of manufacturer papers.

Do not use the printer driver's "Preview before printing feature". It can interrupt the color management process.

### THICK / HEAVY PAPERS

Prevent Paper Abrasion – This is Canon's way of saying "thick paper setting". Activating it will raise the print head slightly and help you avoid head strikes. *See page 3 for details.*

Top paper tray – We recommend you use the top paper tray for all but the lightest weight inkjet papers.

### Contact Red River Paper

support@redriverpaper.com

888-248-8774

## MEDIA SETTING RECOMMENDATIONS

Paper	Media Setting	Special
<b>68lb. UltraPro Gloss 2.0</b>	Photo Paper Plus Glossy II	
<b>66lb. Polar Pearl Metallic</b>	Photo Paper Plus Glossy II	
<b>60lb. &amp; 42lb. Pecos River Gloss</b>	Photo Paper Plus Glossy II	
<b>96lb. Pecos River Gloss Magna</b>	Photo Paper Plus Glossy II	<a href="#">Prevent Paper Abrasion</a>
<b>86lb. Pecos River Gloss Duo</b>	Photo Paper Plus Glossy II	<a href="#">Prevent Paper Abrasion</a>
<b>32lb. Premium Gloss</b>	Glossy Photo Paper	
<b>68lb. UltraPro Satin 4.0</b>	Photo Paper Plus Semi-Gloss	
<b>66lb. Palo Duro Satin</b>	Photo Paper Plus Semi-Gloss	
<b>66lb. Arctic Polar Satin</b>	Photo Paper Pro Luster	
<b>Arctic Polar Luster – All Weights</b>	Photo Paper Pro Luster	
<b>Premium Matte Papers – All Weights</b>	Matte Photo Paper	
<b>60lb. Polar Matte / Double Sided</b>	Matte Photo Paper	
<b>88lb. Polar Matte Magna</b>	Matte Photo Paper	<a href="#">Prevent Paper Abrasion</a>
<b>60lb. River Linen 2.0</b>	Matte Photo Paper	
<b>60lb. Paper Canvas</b>	Matte Photo Paper	
<b>64lb. Aurora Art Natural</b>	Matte Photo Paper	<a href="#">Prevent Paper Abrasion</a>
<b>64lb. Aurora Art White</b>	Matte Photo Paper	<a href="#">Prevent Paper Abrasion</a>
<b>San Gabriel Baryta SemiGloss 2.0</b>	Photo Paper Pro Luster	<a href="#">Prevent Paper Abrasion</a>

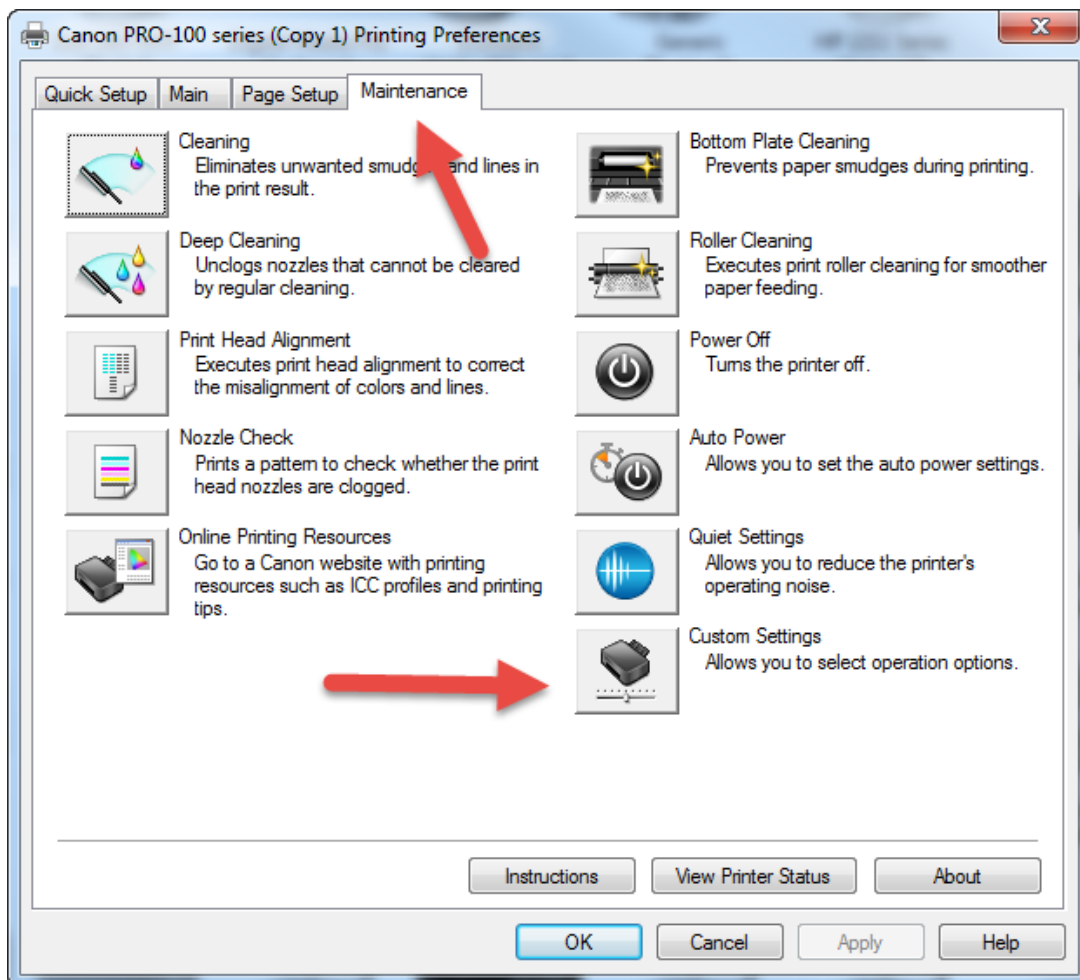
## Handling Guides

Check our website to see if your paper has a Handling Guide. Guides contain important information and helpful tips. [www.redriverpaper.com/guides](http://www.redriverpaper.com/guides)

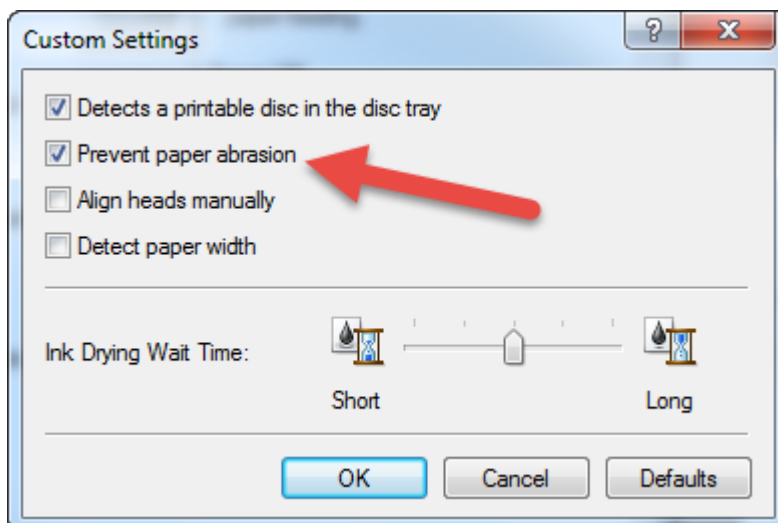
## Thick Paper Setup

### Windows

Go to the Maintenance Tab and click Custom Settings



In the Custom Settings dialog, locate and check the "Prevent paper abrasion" box



## Mac

Go to SYSTEM PREFERENCES > PRINT & FAX

Locate your printer in the Print & Fax menu and click UTILITY

In the printer utility go to the CUSTOM SETTINGS menu

Click the PREVENT PAPER ABRASION check box and click SEND

Note: Your printer will most likely need to be turned on and connected.

