

Red River Paper

Color Profile Usage

Epson Printers / Photoshop CS3

Color profiles are pieces of software that bypass your printer color management in an attempt to reproduce better color gamut and print quality for a specific paper, printer and ink set. If you are unfamiliar with profiles or Photoshop, read all support documents carefully before beginning.

NOTE! Due to the technical nature of color management, Red River Paper cannot offer technical support for these profiles beyond the documents and links included with each profile.

To begin:

Install the Red River profiles on your computer. The ICC files must be placed in the proper folder for Photoshop to see and use them. Mac users will have to manually place the file in one of the folders below.

Operating System ICC File Location

Mac OS 9.2.2 System Folder/Colorsync Profiles

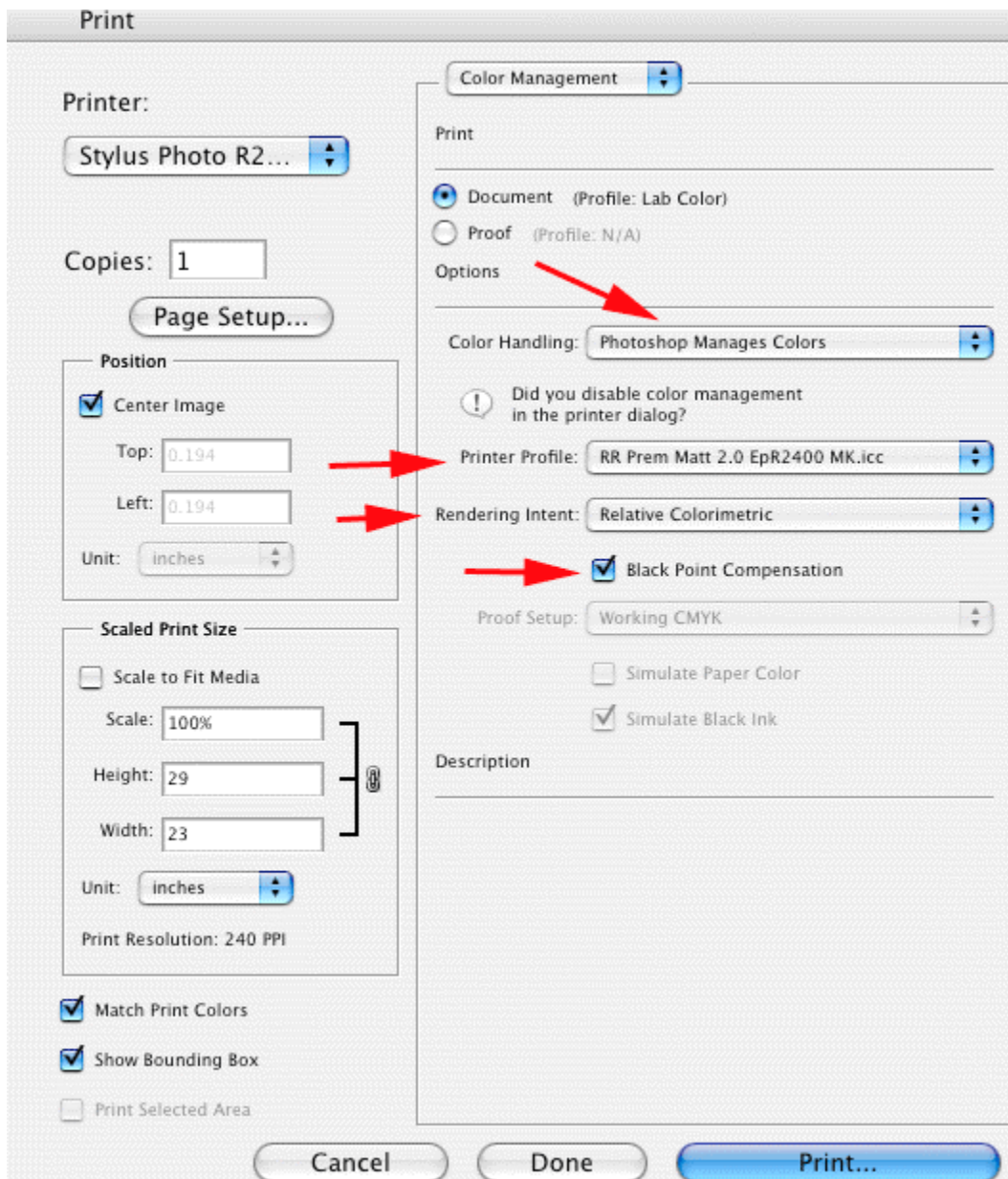
Mac OSX Library/Colorsync/Profiles

Continued on next page...

When you are ready to print, choose File > Print (Command +P). The Print dialog will appear as below.

- 1) Set Color Handling to Photoshop Manages Color
- 2) Choose your paper's profile from the Printer Profile drop down
- 3) Select rendering intent – Relative Colorimetric or Perceptual. See your individual profile instructions for help
- 4) Check Black Point Compensation

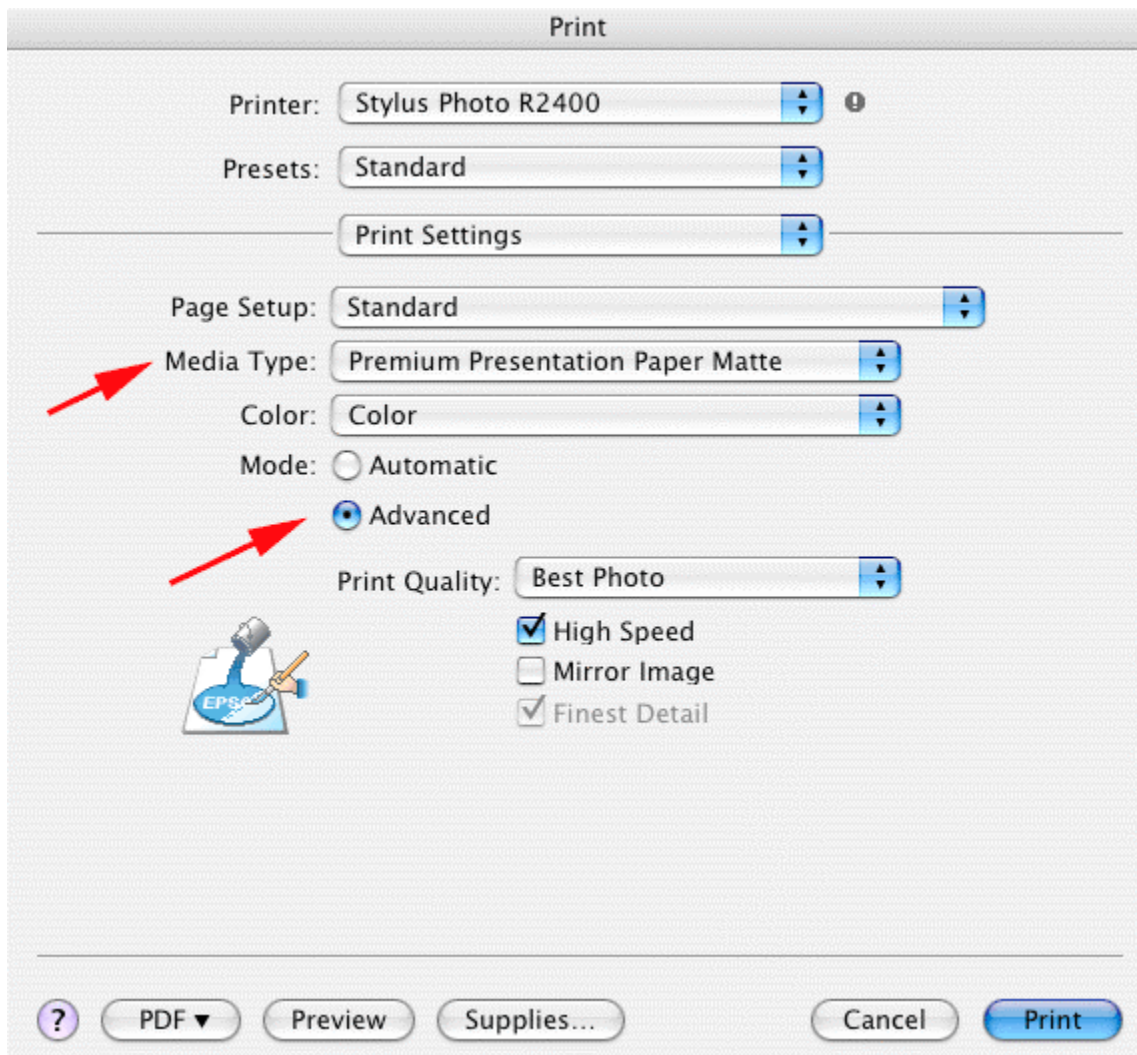
Click Print



Continued on next page....

Once in the Print dialog, make sure to choose your printer in the Printer drop down menu at the top. Now, go to the Print Settings menu.

- 1) Set your media type. Check the profile instructions for recommendations
- 2) Set Mode to Advanced
- 3) Set quality to Best Photo or 1440dpi
- 4) The High Speed option is your choice

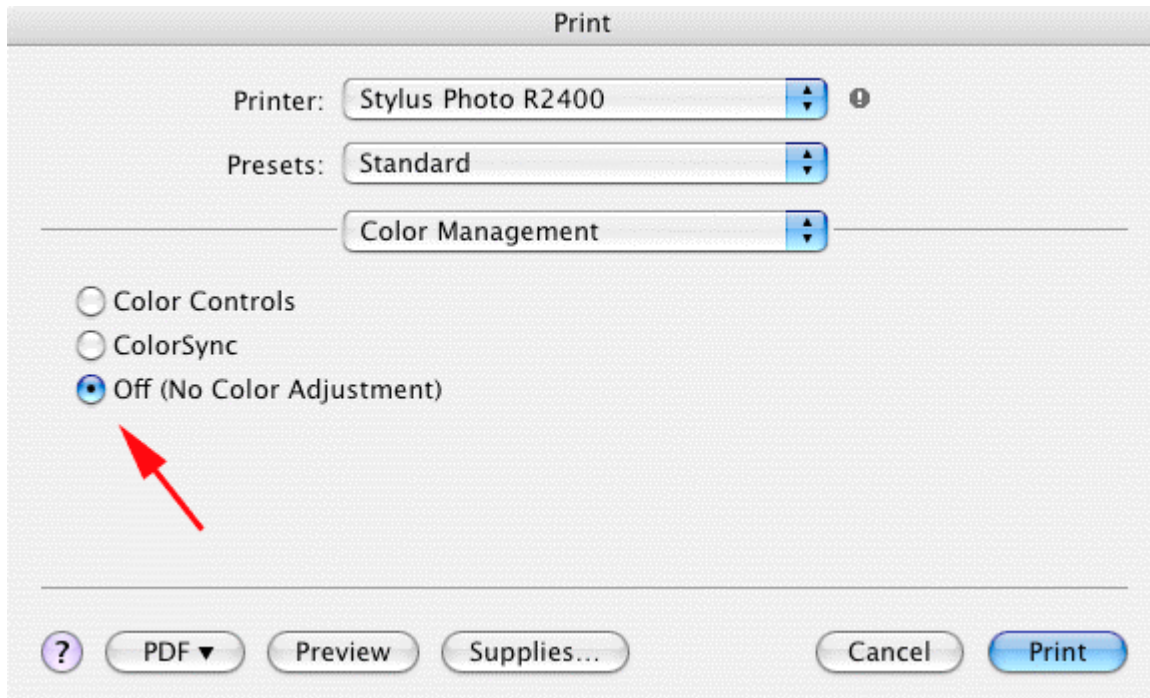


Continued on next page....

Next, go to the Color Management menu

- 1) Set to "Off (No Color Adjustment)"

This is a critical step. Turning off the printer color management is necessary in order to properly use your paper's ICC profile.



Click Print. Your print is now managed using an ICC profile via Photoshop's color management.

For further help on color profile usage, please go to www.redriverpaper.com/profiles