



## Printer Color Profile Instructions

Color profiles are data files that contain a description of how a particular paper, ink, and printer create all colors, shades, and densities. Using a profile will result in more accurate and consistent output.

**Printer:** Epson ET-8550 / 8500

### Setting Recommendations

**Mode:** Off No Color Adjustment

**Print Quality:** High

### Support


How to install profiles

[www.redriverpaper.com/installprofiles](http://www.redriverpaper.com/installprofiles)

How to use profiles

[www.redriverpaper.com/useprofiles](http://www.redriverpaper.com/useprofiles)

### Some Hints

 The name of the paper you are using will not be listed in the media setting drop down menu in the printer driver. That menu only has the names of manufacturer papers.

Do not use the printer driver's "Preview before printing feature". It can interrupt the color management process.

Turn on your printer's thick paper setting when using heavy weight papers.

Epson Printers – Set Paper Thickness to recommended setting on the next page.

Platen Gap – Set to Wide if you experience head strikes – black marks or scrapes on your print.

### Contact Red River Paper

support@redriverpaper.com

888-248-8774

## MEDIA SETTING RECOMMENDATIONS

These are the media setting you select in the printer driver. See below for examples of what that looks like on your computer.

Paper	Media Setting	Special
<b>68lb. UltraPro Gloss</b>	Ultra Premium Photo Paper Glossy	
<b>UltraPro Luster 300</b>	Ultra Premium Photo Paper Luster	
<b>UltraPro SemiGloss Duo 255</b>	Premium Photo Paper Semi-Gloss	
<b>68lb. UltraPro Satin 4.0</b>	Ultra Premium Photo Paper Luster	
<b>66lb. Palo Duro Satin</b>	Ultra Premium Photo Paper Luster	
<b>Arctic Polar Luster – All Weights</b>	Ultra Premium Photo Paper Luster	
<b>Polar Metallic Papers</b>	Ultra Premium Photo Paper Glossy	
<b>Premium Matte – All Weights</b>	Premium Presentation Paper Matte	
<b>60lb. Polar Matte / Double Sided</b>	Premium Presentation Paper Matte	
<b>88lb. Polar Matte</b>	Premium Presentation Paper Matte	Thick Paper
<b>60lb. River Linen 2.0</b>	Premium Presentation Paper Matte	
<b>60lb. Paper Canvas</b>	Premium Presentation Paper Matte	
<b>Big Bend Baryta 310</b>	Premium Photo Paper Semi-Gloss	Thick Paper
<b>Palo Duro Etching 315</b>	Velvet Fine Art Paper	Thick Paper
<b>Palo Duro Smooth 310</b>	Velvet Fine Art Paper	Thick Paper
<b>Palo Duro Softgloss Rag 315</b>	Premium Photo Paper Semi-Gloss	Thick Paper
<b>Palo Duro Baryta 300</b>	Premium Photo Paper Semi-Gloss	Thick Paper
<b>Aurora Art White</b>	Velvet Fine Art Paper	Thick Paper
<b>Aurora Art Natural</b>	Velvet Fine Art Paper	Thick Paper
<b>Noori / Baram Hanji</b>	Presentation Paper Matte	

**Full instructions for using printer profiles are on our website:**

[www.redriverpaper.com/useprofiles](http://www.redriverpaper.com/useprofiles)

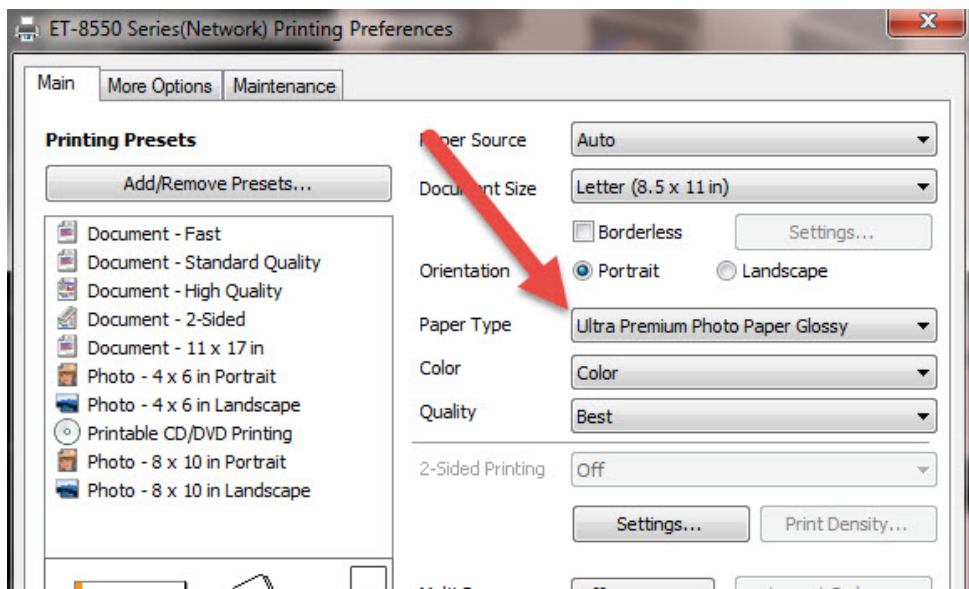
Epson considers the ET-8550 part of their office printer series. The printer driver, particularly on Windows, looks different than you may expect. Controls and settings are in unexpected places if you're used to their photo printers. Below are some helpful tips and pointers to quickly find the settings you need.

### Where does the Media / Paper Type go?

Using the above table, find the media type we recommend using when printing with a profile. The select it in the printer driver dialog. See below for examples.

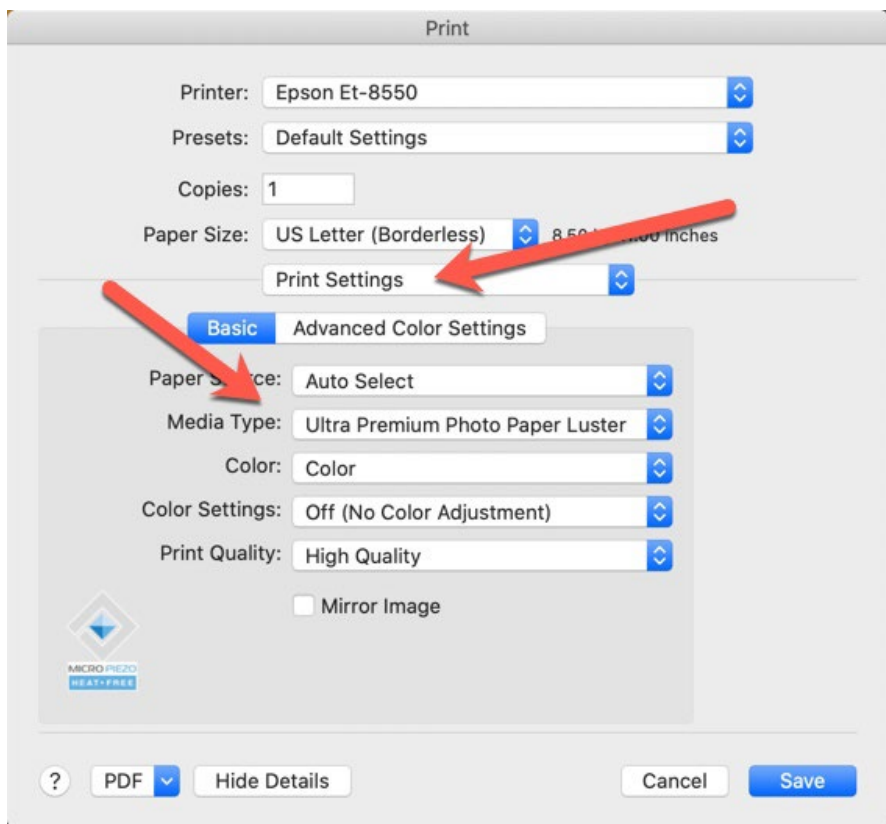
#### Windows

The Printing Preferences dialog is your access to the printer driver. Click on the Paper Type drop down menu and choose the correct setting. NOTE: You need to do this or verify it is accurate each time you print!



## Mac

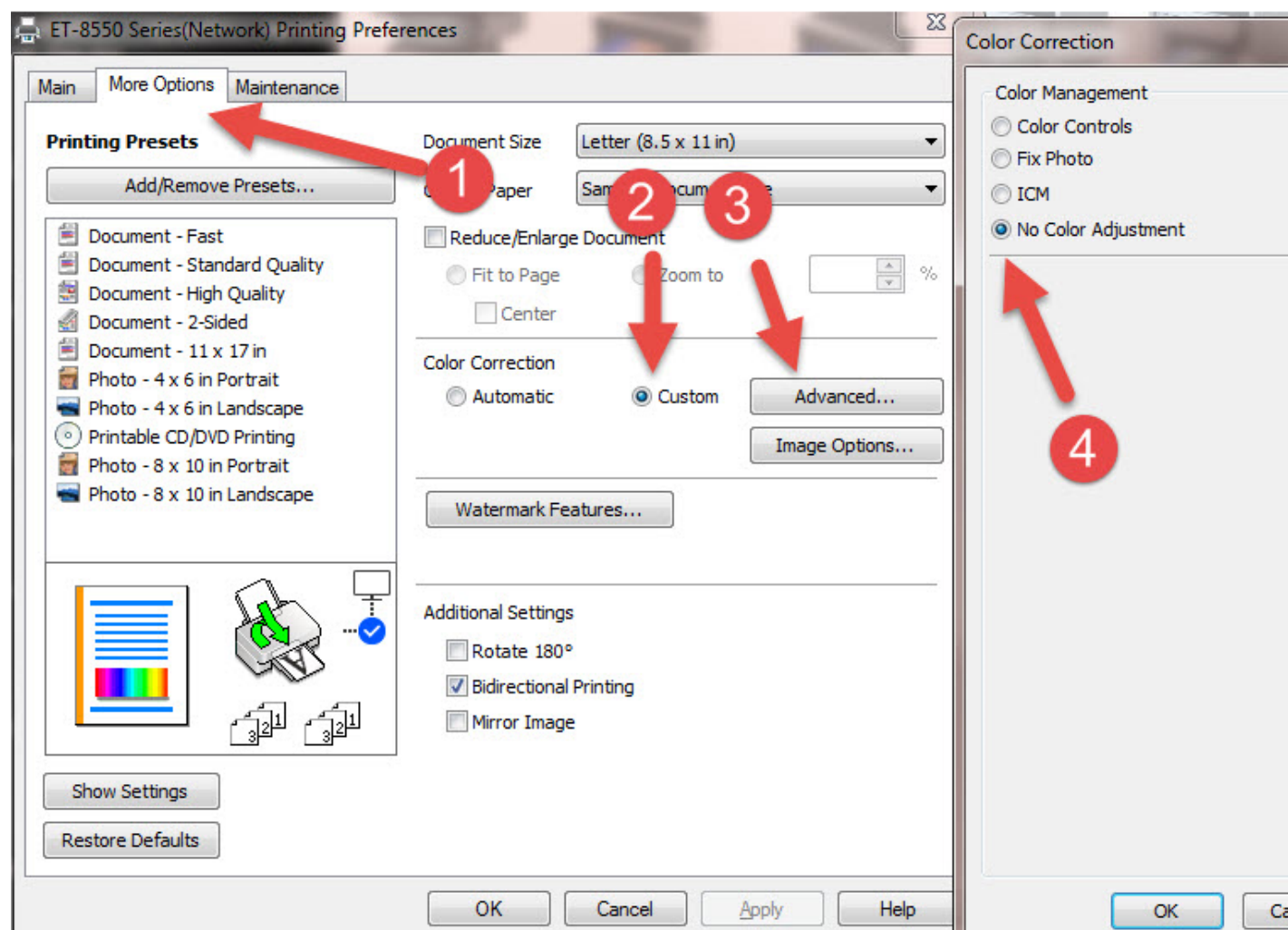
The Print dialog is your access to the printer driver. Choose the Print Settings menu (top arrow). Then click on the Media Type drop down menu and choose the correct setting. NOTE: You will do this or verify it is accurate each time you print!



## How to Turn off the Printer's Color Management?

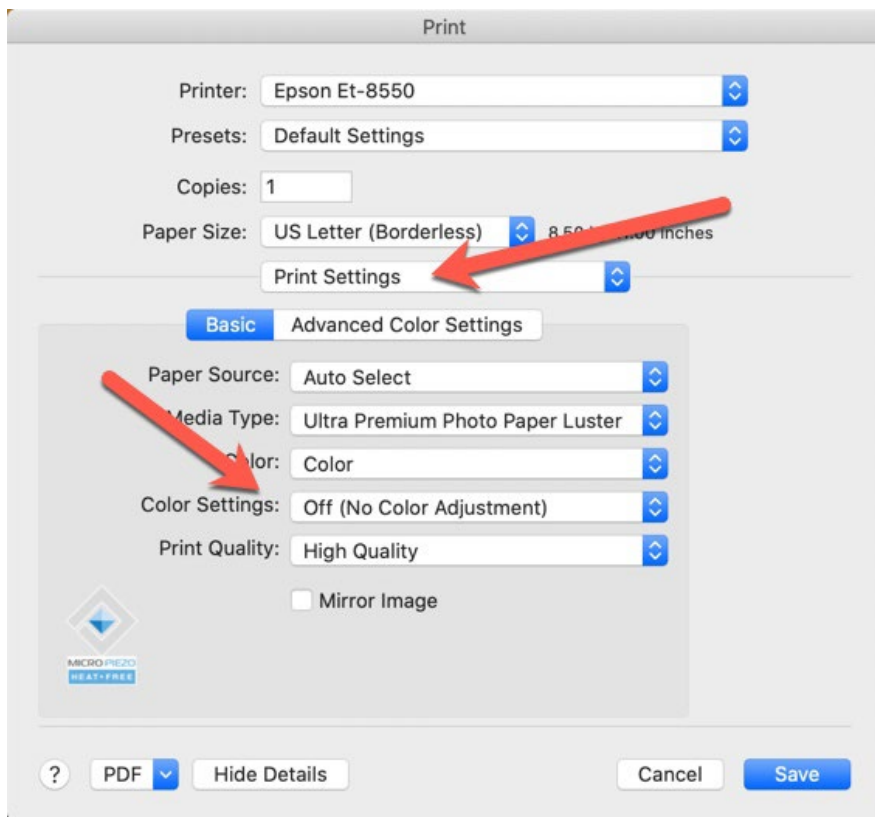
## Windows

More Options > Color Correction Custom > Advanced > No Color Correction



## Mac

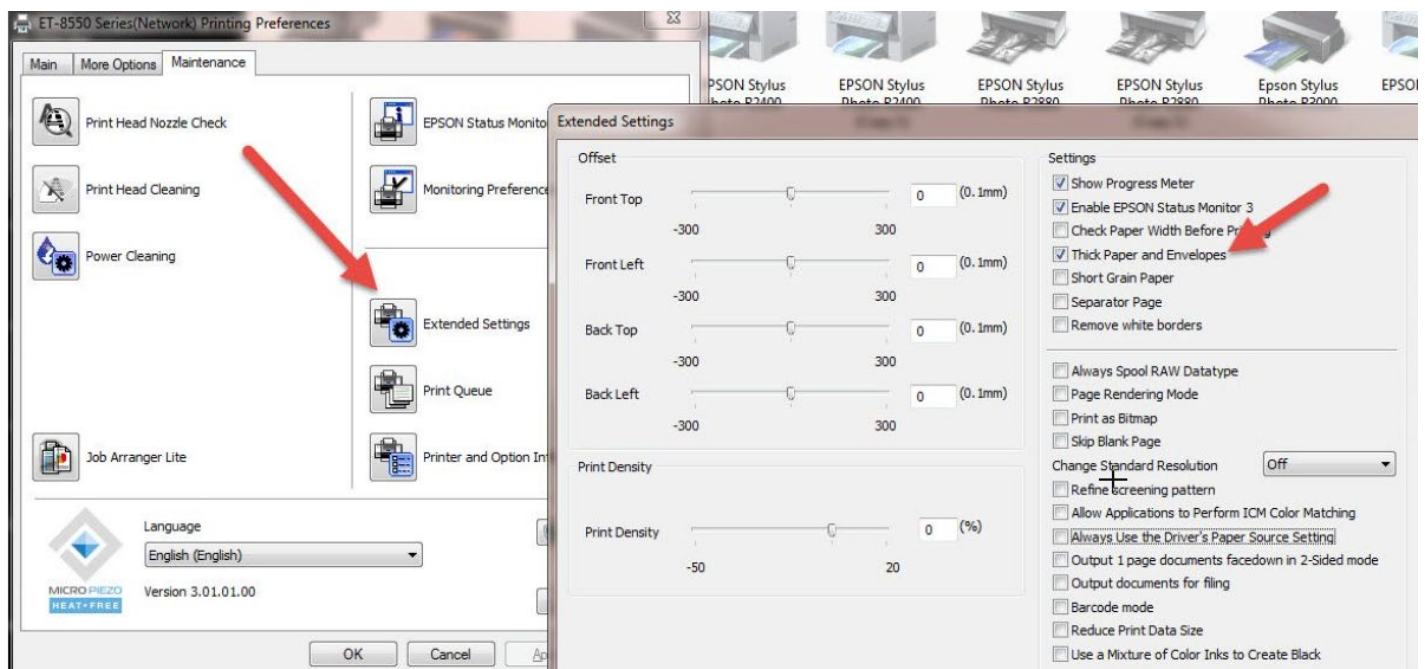
Choose the Print Settings menu (top arrow). Color settings to Off (No Color Adjustment)



## Windows - Thick Paper Setting

In the Printer Properties

Maintenance tab > Extended settings > Thick Paper & Envelopes



## **Handling Guides**

Check our website to see if your paper has a Handling Guide. Guides contain important information and helpful tips. [www.redriverpaper.com/guides](http://www.redriverpaper.com/guides)

## **Further Help**

Go to <http://www.redrivercatalog.com/infocenter/> for more help with driver settings and more.