



## **Printer Color Profile Instructions**

Color profiles are data files that contain a description of how a particular paper, ink, and printer create all colors, shades, and densities. Using a profile will result in more accurate and consistent output.

**Printer:** Epson Workforce Printers - WF-3620 3460 7110 7610 7620

### **Setting Recommendations**

Color Correction – No Color Adjustment (See page 2-4 for details)

Print Quality: High

### **Support**


How to install profiles

[www.redriverpaper.com/installprofiles](http://www.redriverpaper.com/installprofiles)

How to use profiles

[www.redriverpaper.com/useprofiles](http://www.redriverpaper.com/useprofiles)

### **Some Hints**

 The name of the paper you are using will not be listed in the media setting drop down menu in the printer driver. That menu only has the names of manufacturer papers.

Do not use the printer driver's "Preview before printing feature". It can interrupt the color management process.

THICK / HEAVY PAPERS - See page 5 for details

### **Contact Red River Paper**

support@redriverpaper.com

888-248-8774

## MEDIA SETTING RECOMMENDATIONS

Paper	Media Setting	Special
<b>68lb. UltraPro Gloss 2.0</b>	Ultra Premium Photo Paper Glossy	
<b>45lb. Zeppelin SemiGloss</b>	Premium Photo Paper Semi-Gloss	
<b>68lb. UltraPro Satin 4.0</b>	Premium Photo Paper Semi-Gloss	
<b>66lb. Palo Duro Satin</b>	Premium Photo Paper Semi-Gloss	
<b>66lb. Arctic Polar Satin</b>	Premium Photo Paper Semi-Gloss	
<b>Arctic Polar Luster – All Weights</b>	Premium Photo Paper Semi-Gloss	
<b>66lb. Polar Pearl Metallic</b>	Ultra Premium Photo Paper Glossy	
<b>Premium Matte Papers – All Weights</b>	Premium Presentation Paper Matte	
<b>60lb. Polar Matte / Double Sided</b>	Premium Presentation Paper Matte	
<b>60lb. Paper Canvas</b>	Premium Presentation Paper Matte	
<b>64lb. Aurora Art Natural</b>	Premium Presentation Paper Matte	Thick paper setting. See page 5
<b>64lb. Aurora Art White</b>	Premium Presentation Paper Matte	Thick paper setting See page 5

### Handling Guides

Check our website to see if your paper has a Handling Guide. Guides contain important information and helpful tips. [www.redriverpaper.com/guides](http://www.redriverpaper.com/guides)

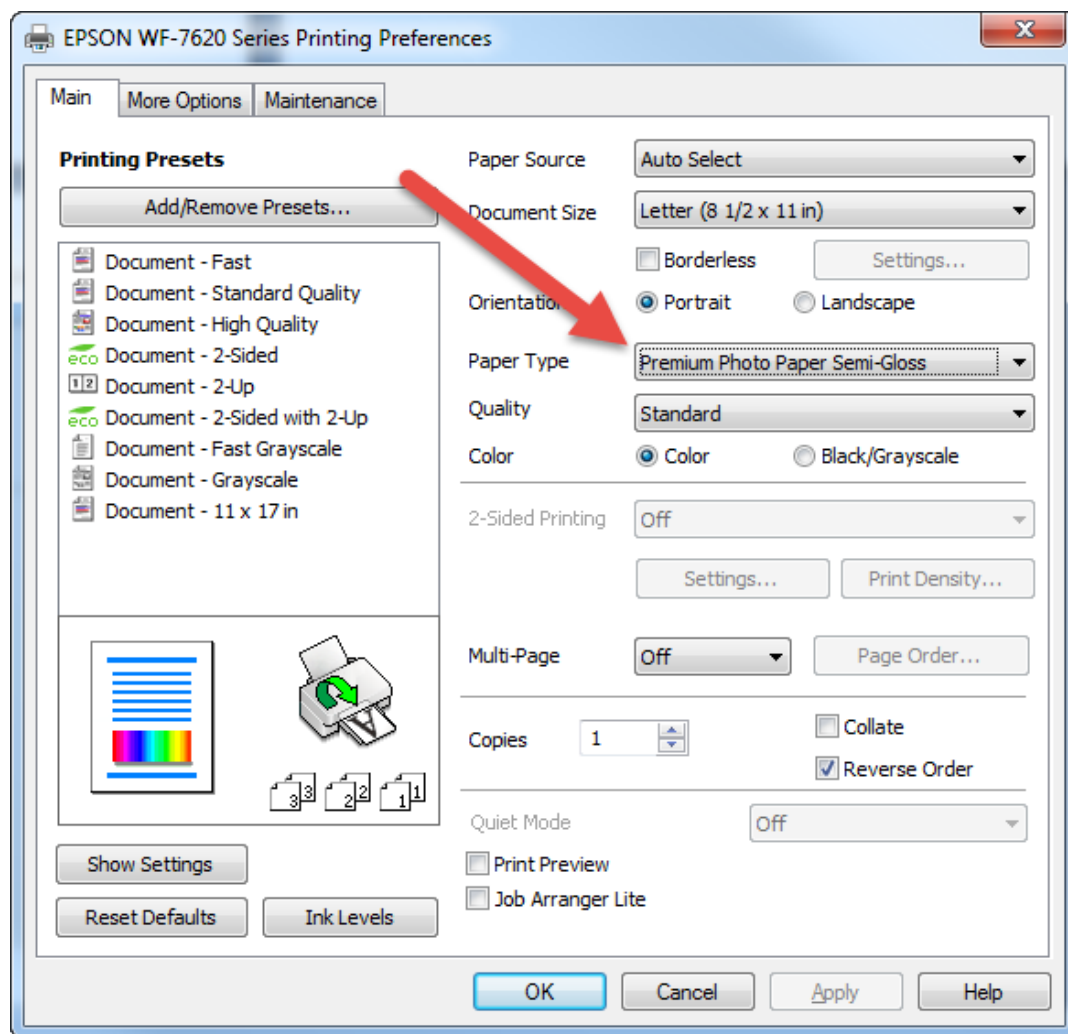
### Color Management Help for Workforce Series

Using profiles means you let your photo software (such as Photoshop) control the color output. This also means you have to turn off your printer's color management system. If you do not, print quality will be poor.

Windows - Here are what your printer preferences menus should look like when printing with a profile.

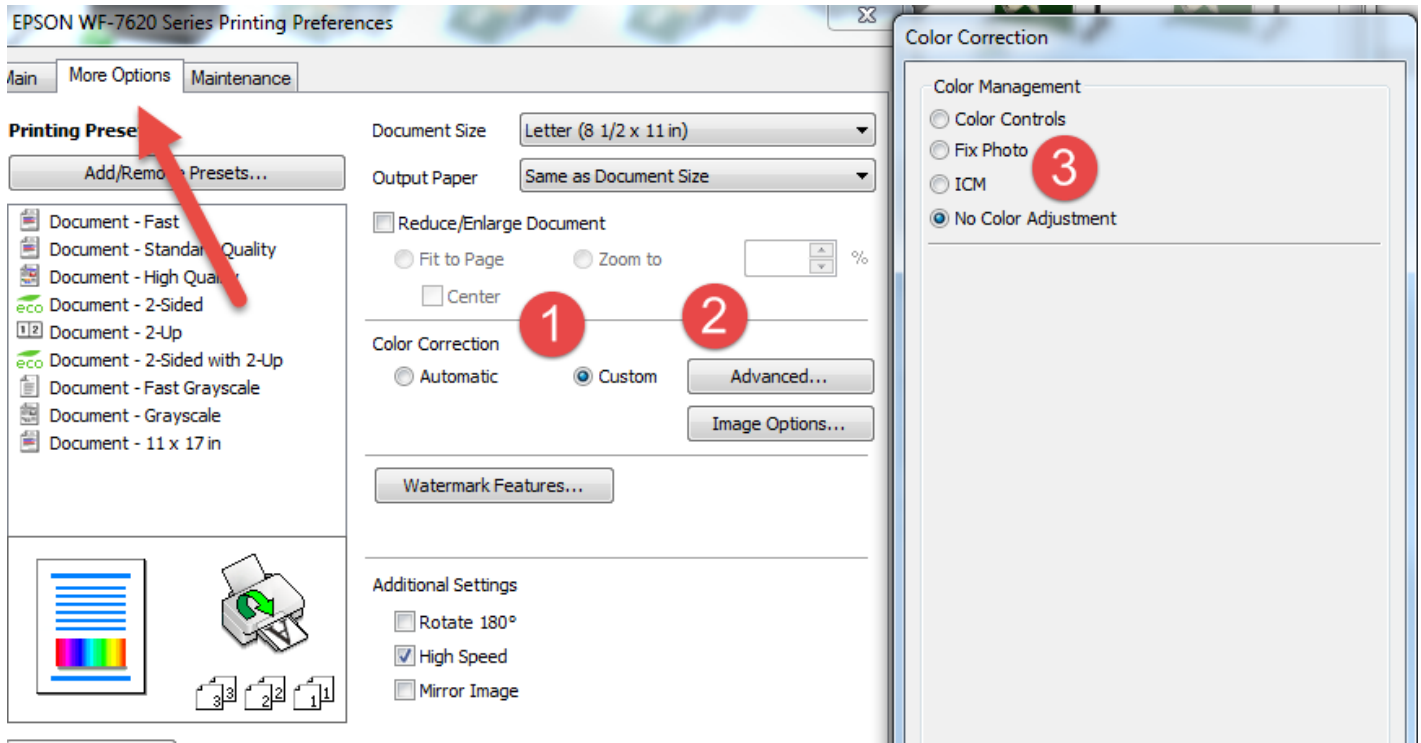
Set your Paper Type according to the instructions above.

This is an example of paper type setting. Refer to the table above for the right setting for your paper.



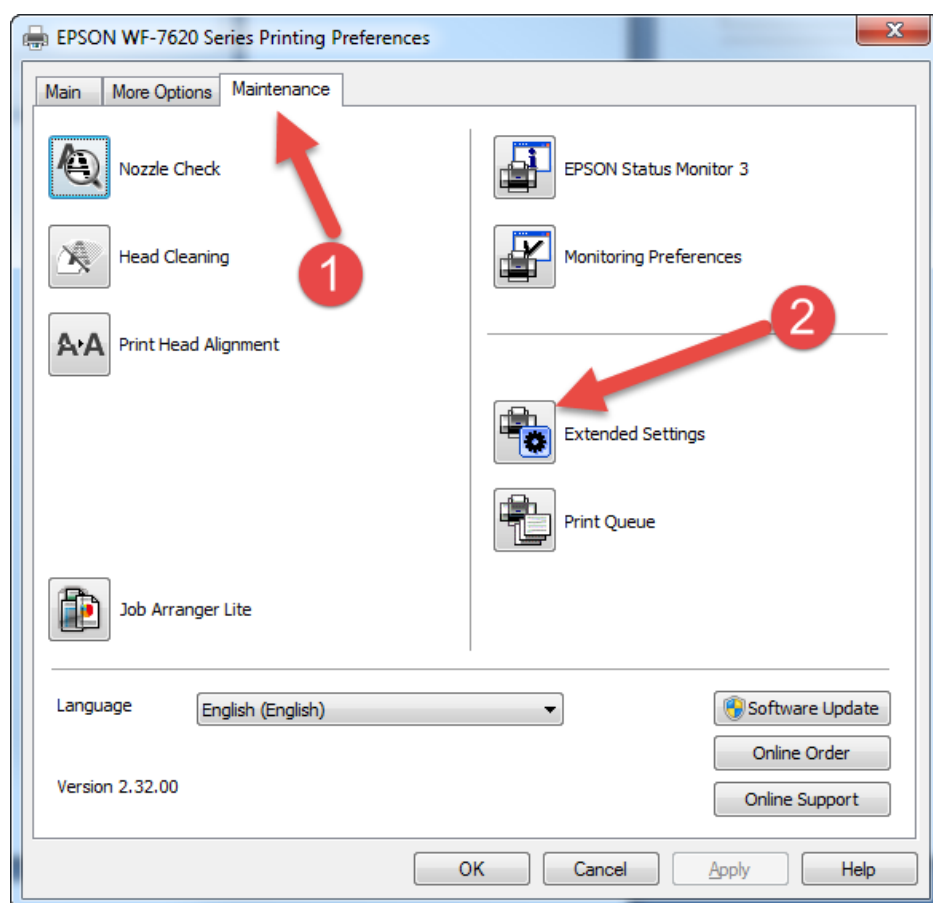
Locate and turn off the printer's color management. Start in the More Options" tab.

1. Click the Custom button
2. Click the Advanced button
3. In the Color Correction menu, choose No Color Adjustment



## Thick Paper Settings

Go to the Maintenance tab, click Extended Settings.



In the Extended Settings menu, locate and check the Thick Paper and Envelopes option

