



Printer Color Profile Instructions

Color profiles are data files that contain a description of how a particular paper, ink, and printer create all colors, shades, and densities. Using a profile will result in more accurate and consistent output.

Printer: Epson Workforce Printers - WF-3620 3460 7110 7610 7620

Setting Recommendations

Color Correction – No Color Adjustment (See page 2-4 for details)

Print Quality: High

Support


How to install profiles

www.redriverpaper.com/installprofiles

How to use profiles

www.redriverpaper.com/useprofiles

Some Hints

 The name of the paper you are using will not be listed in the media setting drop down menu in the printer driver. That menu only has the names of manufacturer papers.

Do not use the printer driver's "Preview before printing feature". It can interrupt the color management process.

THICK / HEAVY PAPERS - See page 5 for details

Contact Red River Paper

support@redriverpaper.com

888-248-8774

MEDIA SETTING RECOMMENDATIONS

Paper	Media Setting	Special
68lb. UltraPro Gloss 2.0	Ultra Premium Photo Paper Glossy	
UltraPro Luster 300	Premium Photo Paper Semi-Gloss	
68lb. UltraPro Satin 4.0	Premium Photo Paper Semi-Gloss	
66lb. Palo Duro Satin	Premium Photo Paper Semi-Gloss	
66lb. Arctic Polar Satin	Premium Photo Paper Semi-Gloss	
Arctic Polar Luster – All Weights	Premium Photo Paper Semi-Gloss	
Polar Metallic Papers	Ultra Premium Photo Paper Glossy	
Premium Matte Papers – All Weights	Premium Presentation Paper Matte	
60lb. Polar Matte / Double Sided	Premium Presentation Paper Matte	
60lb. Paper Canvas	Premium Presentation Paper Matte	
60lb. River Linen 2.0	Premium Presentation Paper Matte	
64lb. Aurora Art Natural	Premium Presentation Paper Matte	Thick paper setting. See page 5
64lb. Aurora Art White	Premium Presentation Paper Matte	Thick paper setting See page 5

Handling Guides

Check our website to see if your paper has a Handling Guide. Guides contain important information and helpful tips. www.redriverpaper.com/guides

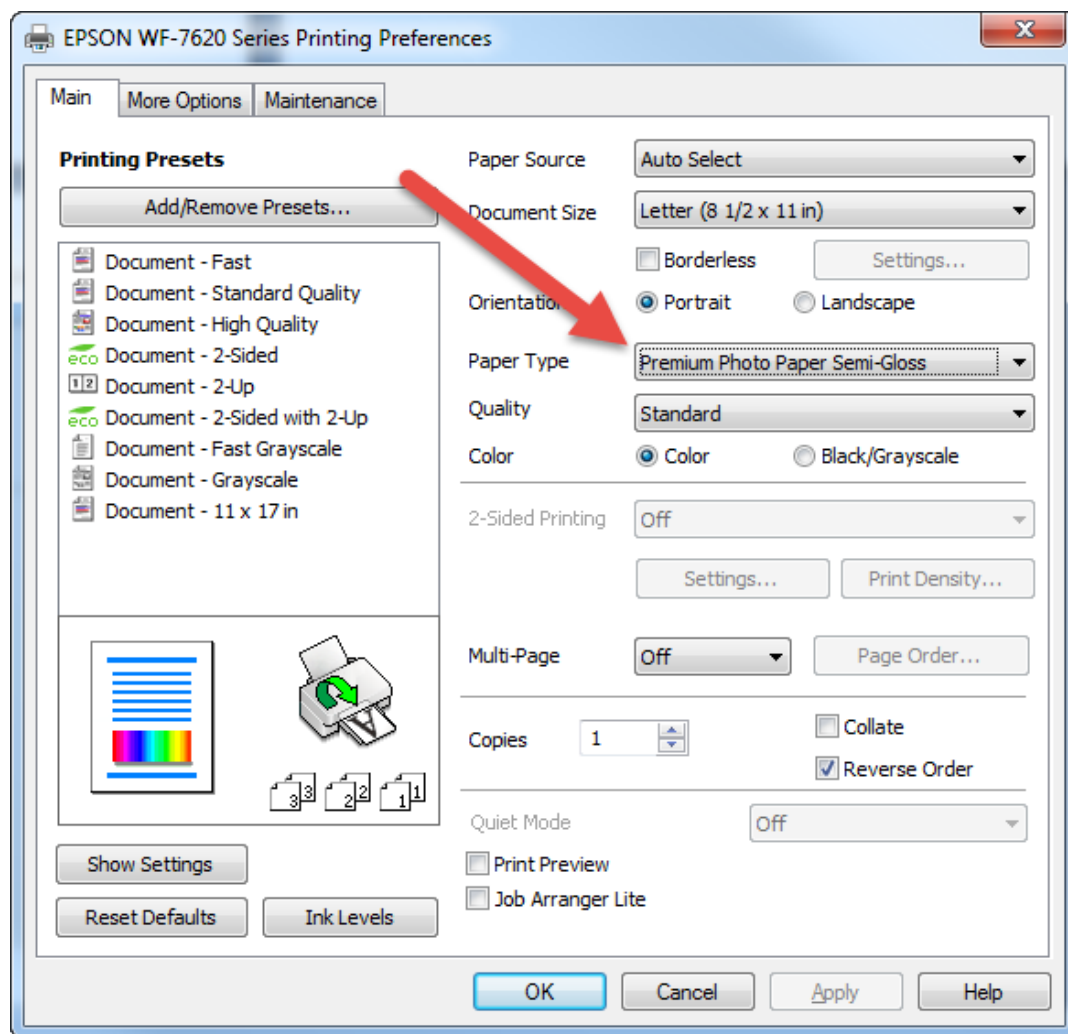
Color Management Help for Workforce Series

Using profiles means you let your photo software (such as Photoshop) control the color output. This also means you have to turn off your printer's color management system. If you do not, print quality will be poor.

Windows - Here are what your printer preferences menus should look like when printing with a profile.

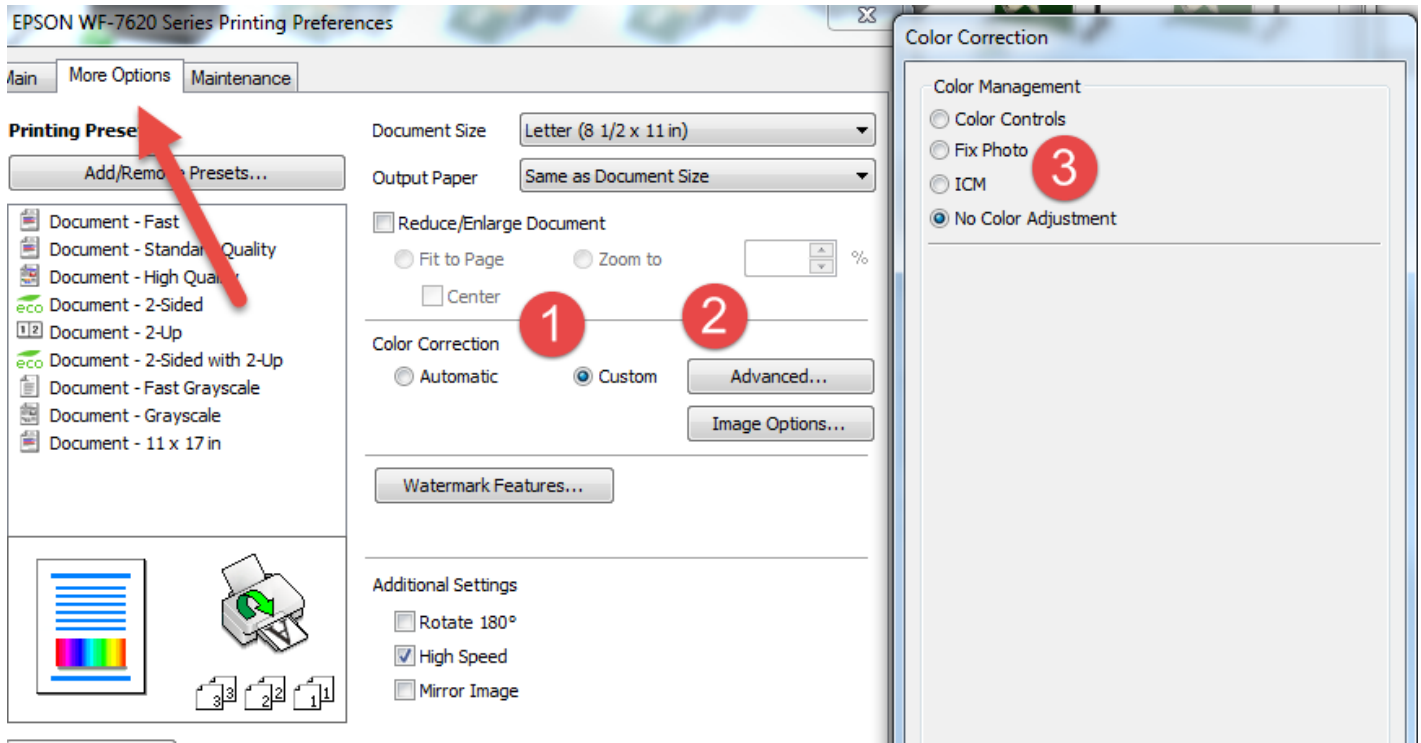
Set your Paper Type according to the instructions above.

This is an example of paper type setting. Refer to the table above for the right setting for your paper.



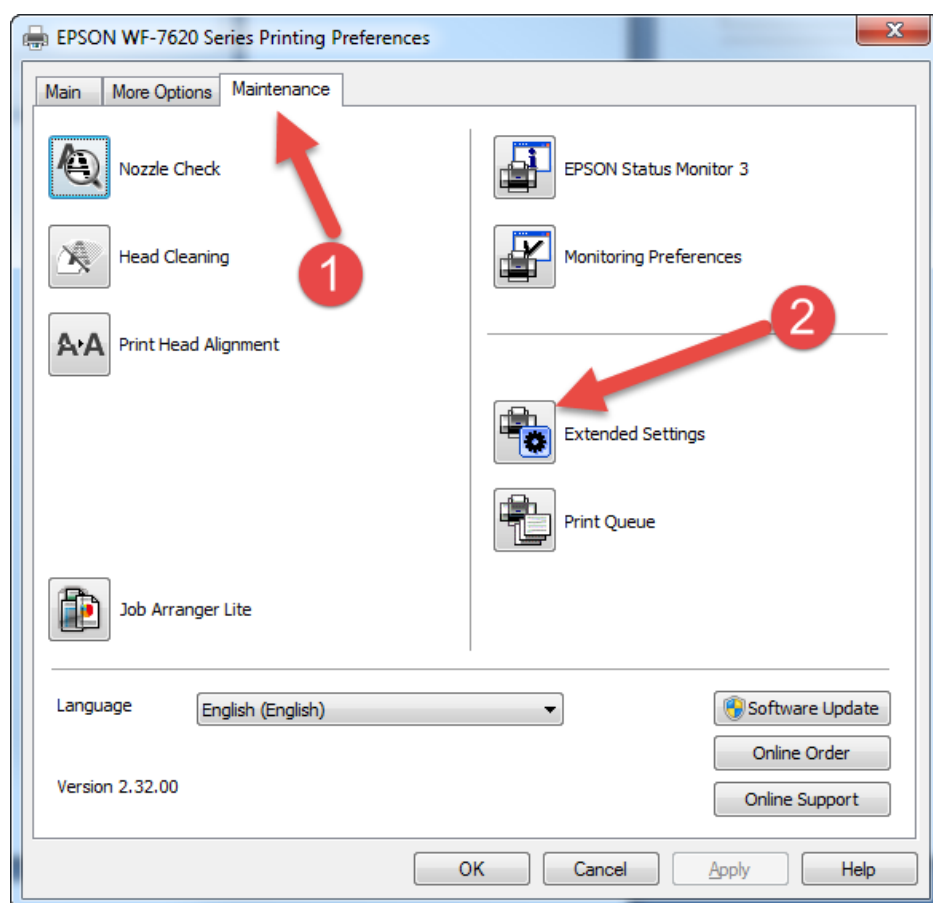
Locate and turn off the printer's color management. Start in the More Options" tab.

1. Click the Custom button
2. Click the Advanced button
3. In the Color Correction menu, choose No Color Adjustment



Thick Paper Settings

Go to the Maintenance tab, click Extended Settings.



In the Extended Settings menu, locate and check the Thick Paper and Envelopes option

