

Profile Usage Instructions

GC Matte
Epson 7600 PK ink

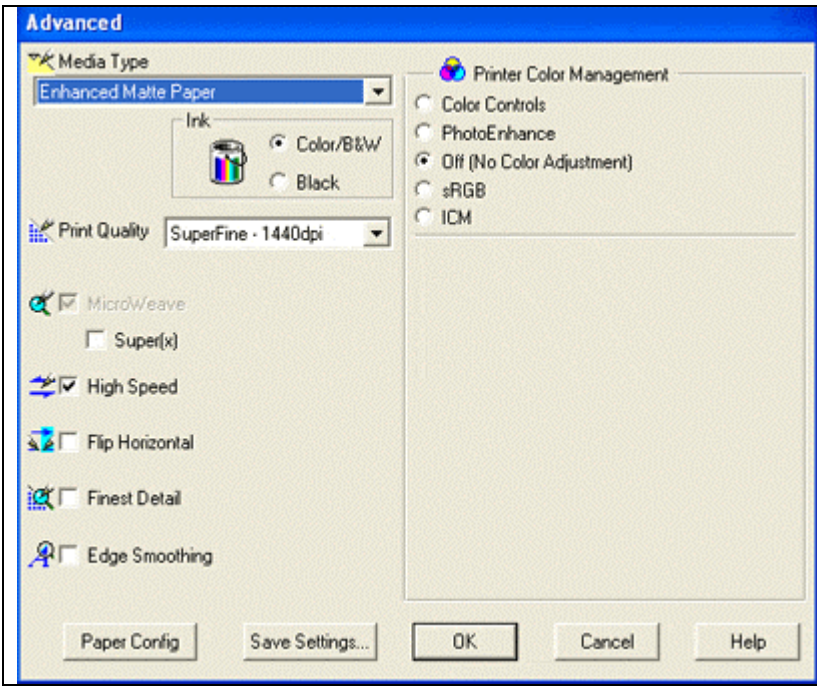
For information on how to use color profiles, read Red River’s “Color Profile Usage” and Epson’s “How to use ICC profiles”. These are available for download at www.redriverpaper.com/profiles

When you install the profile, it will show up in Photoshop's profile menu as:

RR GC Matte Ep7600 PK.icc

Below are the required printer driver settings for this profile. You must make sure all of the settings are correct to achieve optimum print quality.

| Parameter | Required Setting |
|------------------|---------------------------|
| Paper Setting | Enhanced Matte Paper |
| Quality | Superfine – 1440dpi |
| Color Management | Off (No Color Adjustment) |
| High Speed | ON |
| Edge Smoothing | OFF |



PC driver screenshot showing the settings for this profile.

Special Notes:

High Speed – Turning high speed off should not effect the color balance or quality of the image
Edge Smoothing – Like high speed, you may experiment with this setting in the ON position

Refer to www.redriverpaper.com/profiles for any updates. Technical support for color profiles is limited to the documents included in the profiles section of www.redriverpaper.com