

Profile Usage Instructions

GC Matte Canon S9000 / i9100

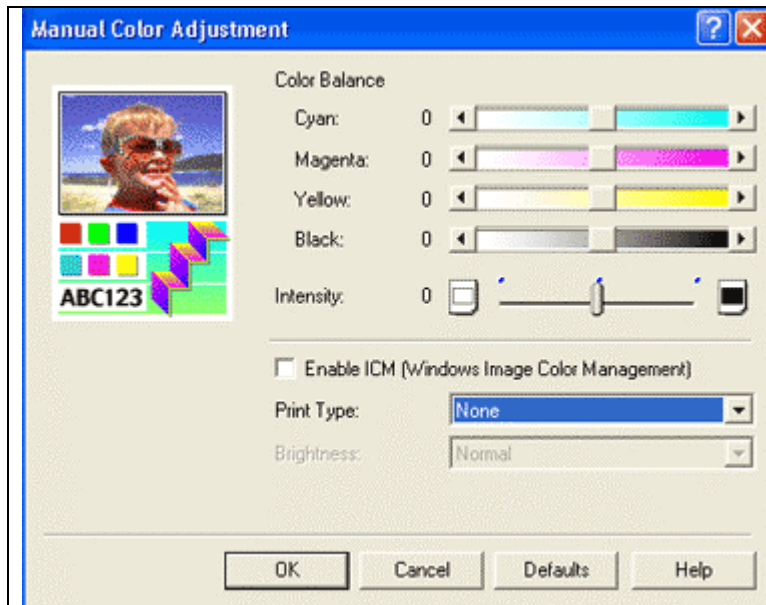
For information on how to use color profiles, read Red River's "Color Profile Usage" and Epson's "How to use ICC profiles".

When you install the profile, it will show up in your ICC aware application (ex. Photoshop) profile menu as:

RR GC Matte Canon s9000 i9100

Below are the required printer driver settings for this profile. You must make sure all of the settings are correct to achieve optimum print quality.

Parameter	Required Setting
Paper Setting	Matte Photo Paper
Quality	Fine
Color Adjustment	Manual – Print Type "None"



From the MAIN tab in printer properties – click the Manual button under Color/Intensity

Now at the **Manual Color Adjustment Screen**

Set print type to "None" in order to use ICC profile

Refer to www.redriverpaper.com/profiles for any updates. Technical support for color profiles is limited to the documents included in the profiles section of www.redriverpaper.com

Special Notes:

Refer to www.redriverpaper.com/profiles for any updates. Technical support for color profiles is limited to the documents included in the profiles section of www.redriverpaper.com