

FOR USE WITH CANON i9900 and i8500

For information on how to use color profiles, read Red River's "Color Profile Usage" and Epson's "How to use ICC profiles". When you install the profile, it will show up in your application (ex. Photoshop) profile menu as:

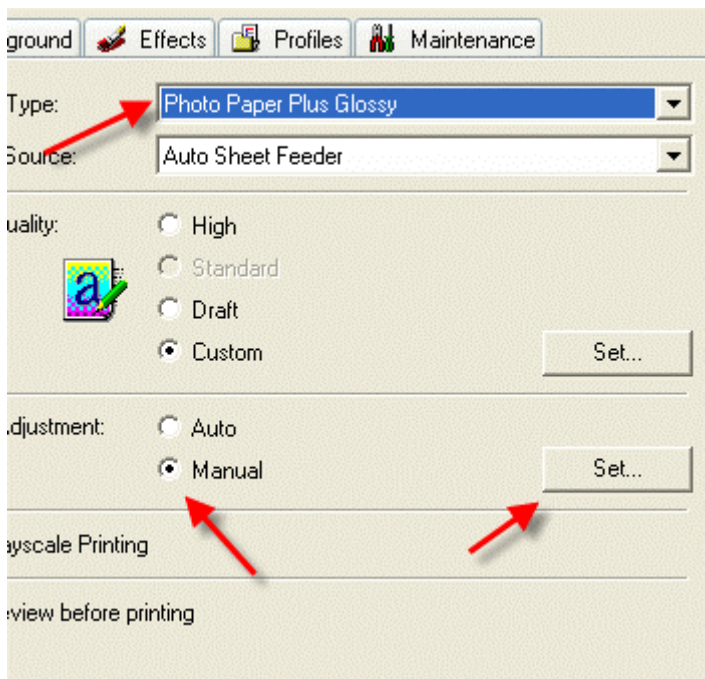
RR Placid Canon i9900.icc

Below are the required printer driver settings for this profile. You must make sure all of the settings are correct to achieve optimum print quality.

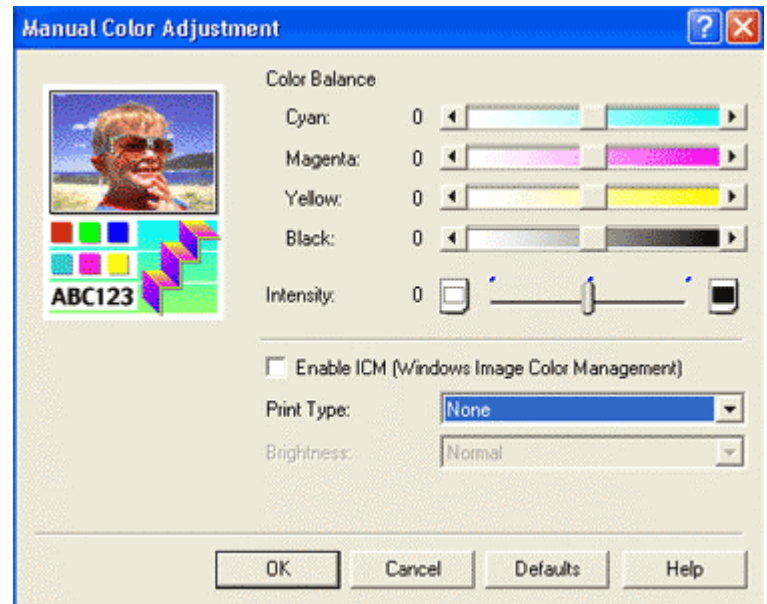
Parameter	Required Setting
Paper Setting	Photo Paper Plus Glossy
Quality	Set to highest available
Color Management	Manual Color Adjustment – Print Type to NONE

1) Set media type

2) Go to the Manual Color Adjustment menu



3) Set print type to "None" in order to use ICC profile



Special Notes:

Refer to www.redriverpaper.com/profiles for any updates. Technical support for color profiles is limited to the documents included in the profiles section of www.redriverpaper.com