

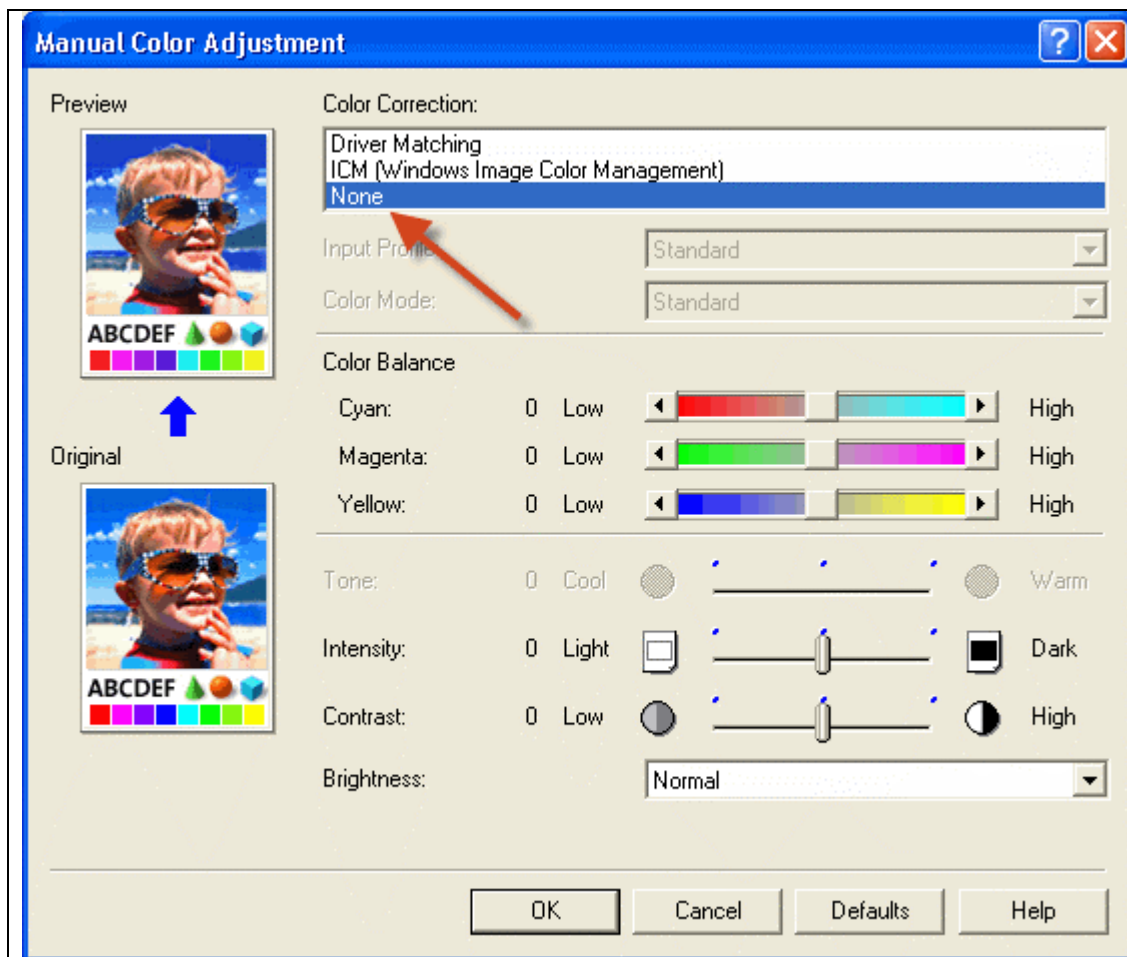
FOR USE WITH THE CANON ip6600d, ip6700d

For information on how to use color profiles, read Red River's "Color Profile Usage" and Epson's "How to use ICC profiles". When you install the profile, it will show up in your application (ex. Photoshop) profile menu as:

RR Placid Canon ip6700d.icc

Below are the required printer driver settings for this profile. You must make sure all of the settings are correct to achieve optimum print quality.

Parameter	Required Setting
Paper Setting	Photo Paper Plus Glossy
Quality	Set to highest available
Color Management	Manual Color Adjustment – Color Correction to NONE



From the **MAIN tab** in printer properties – click the Manual button under Color/Intensity

Now:

Set Color Correction to "None" in order to use ICC profile

Special Notes:

Refer to www.redriverpaper.com/profiles for any updates. Technical support for color profiles is limited to the documents included in the profiles section of www.redriverpaper.com