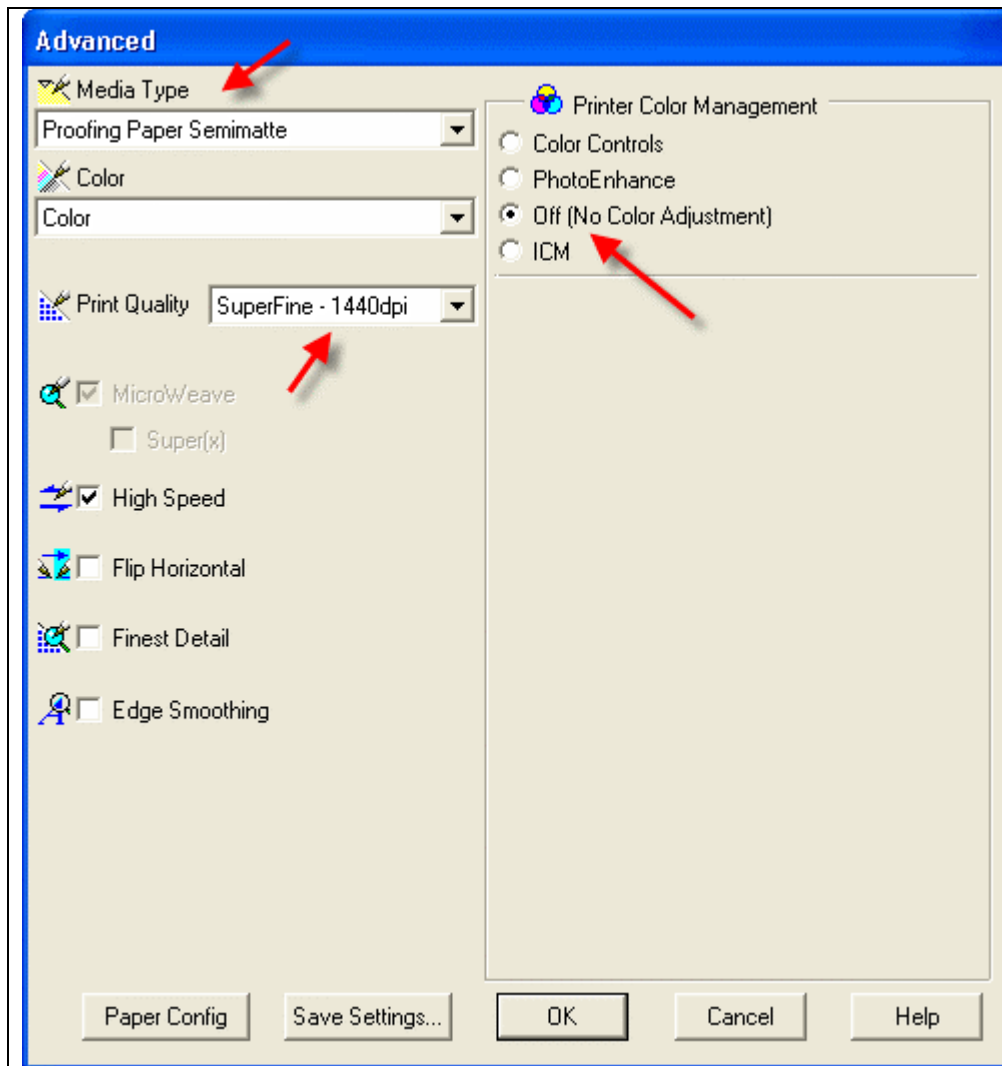


Profile Usage Instructions for Epson 7800, 4800, 9800

For information on how to use color profiles, read Red River's "Color Profile Usage" and Epson's "How to use ICC profiles". These are available for download at www.redriverpaper.com/profiles. When you install the profile, it will show up in your application's profile menu as: **RR Polar Placid Ep 4800 PK**

Below are the required printer driver settings for this profile. You must make sure all of the settings are correct to achieve optimum print quality.

Parameter	Required Setting
Paper Setting	Proofing Paper Semimatte
Quality	Superfine -1440dpi
Color Management	Off (No Color Adjustment)
High Speed	ON
Edge Smoothing	OFF
INK INSTALLED:	PHOTO BLACK



PC driver screenshot showing the settings for this profile.

Special Notes:

High Speed – Turning high speed off should not effect the color balance or quality of the image
Edge Smoothing – Like high speed, you may experiment with this setting in the ON position

Refer to www.redriverpaper.com/profiles for any updates. Technical support for color profiles is limited to the documents included in the profiles section of www.redriverpaper.com