

MATTE BLACK INK VERSION

Profile Usage Instructions

50lb. Premium Matte

32lb. Premium Matte

37lb. Premium Matte

Epson R2400

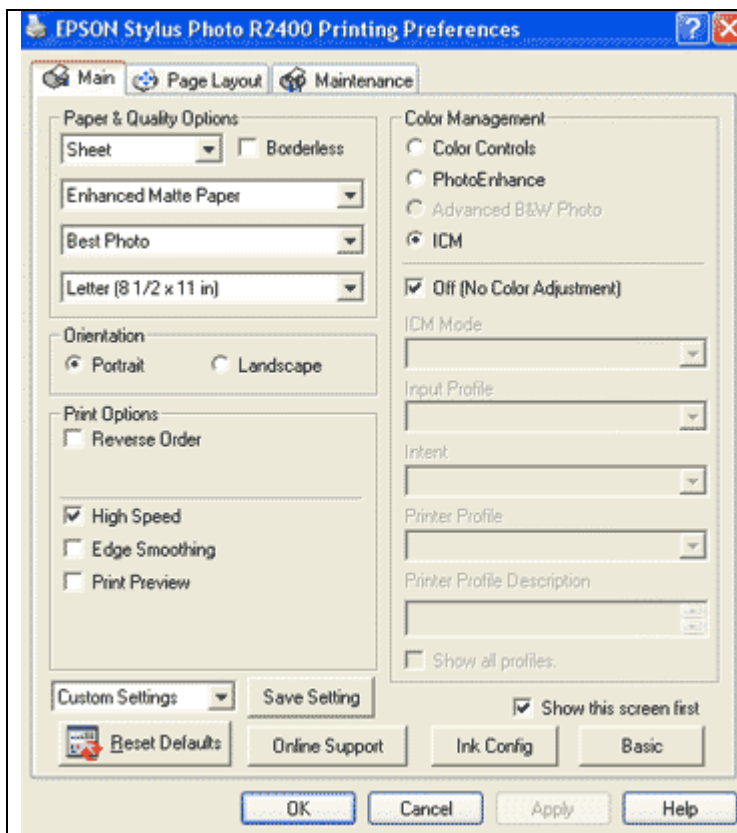
For information on how to use color profiles, read Red River's "Color Profile Usage" and Epson's "How to use ICC profiles". These are available for download at www.redriverpaper.com/profiles

When you install the profile, it will show up in Photoshop's profile menu as:

RR Premium Matte #A Ep2400 Best Photo MK

Below are the required printer driver settings for this profile. You must make sure all of the settings are correct to achieve optimum print quality.

| Parameter | Required Setting |
|------------------|--|
| Paper Setting | Enhanced Matte Paper |
| Quality | Best Photo |
| Color Management | Click ICM then Off (No Color Adjustment) |
| High Speed | ON |
| Edge Smoothing | OFF |



PC driver screenshot showing the settings for this profile.

Special Notes:

High Speed – Turning high speed off should not effect the color balance or quality of the image
Edge Smoothing – Like high speed, you may experiment with this setting in the ON position

Refer to www.redriverpaper.com/profiles for any updates. Technical support for color profiles is limited to the documents included in the profiles section of www.redriverpaper.com