

Profile Usage Instructions
Denali Gloss
Epson R2400

For information on how to use color profiles, read Red River's "Color Profile Usage" and Epson's "How to use ICC profiles". These are available for download at www.redriverpaper.com/profiles

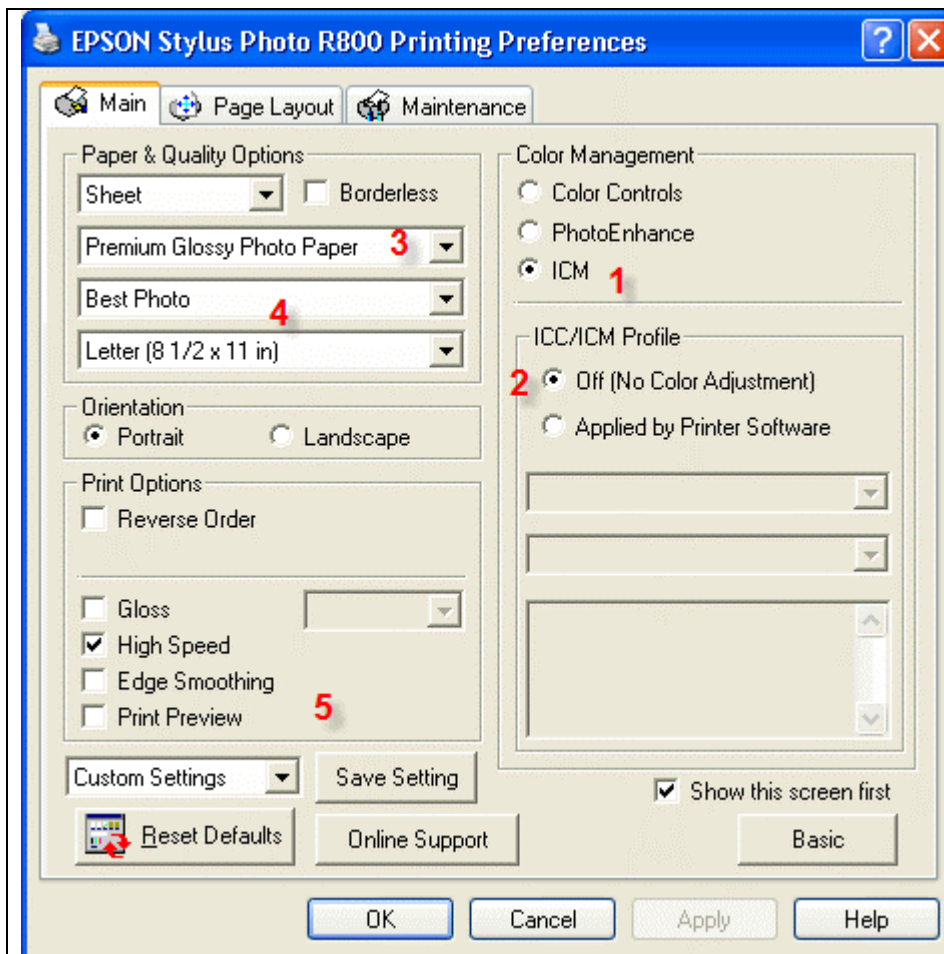
When you install the profile, it will show up in Photoshop's profile menu as:

RR Denali Gloss R2400 BstPh.icc

Below are the required printer driver settings for this profile. You must make sure all of the settings are correct to achieve optimum print quality.

EPSON SETTINGS

<u>Parameter</u>	<u>Required Setting</u>
Paper Setting	Premium Glossy Photo Paper
Quality	Best Photo
Color Management	Click ICM then Off (No Color Adjustment)



**Epson PC driver
screenshot showing the
settings for this profile.**

- 1 – Set ICM**
- 2 – Color Adj to OFF**
- 3 – Select suggested media type**
- 4 – Quality to Best Photo or 1440dpi**
- 5 – High speed and edge smoothing are optional**

