

**Profile Usage Instructions**  
**Denali SemiGloss**  
**Epson R2400**

For information on how to use color profiles, read Red River's "Color Profile Usage" and Epson's "How to use ICC profiles". These are available for download at [www.redriverpaper.com/profiles](http://www.redriverpaper.com/profiles)

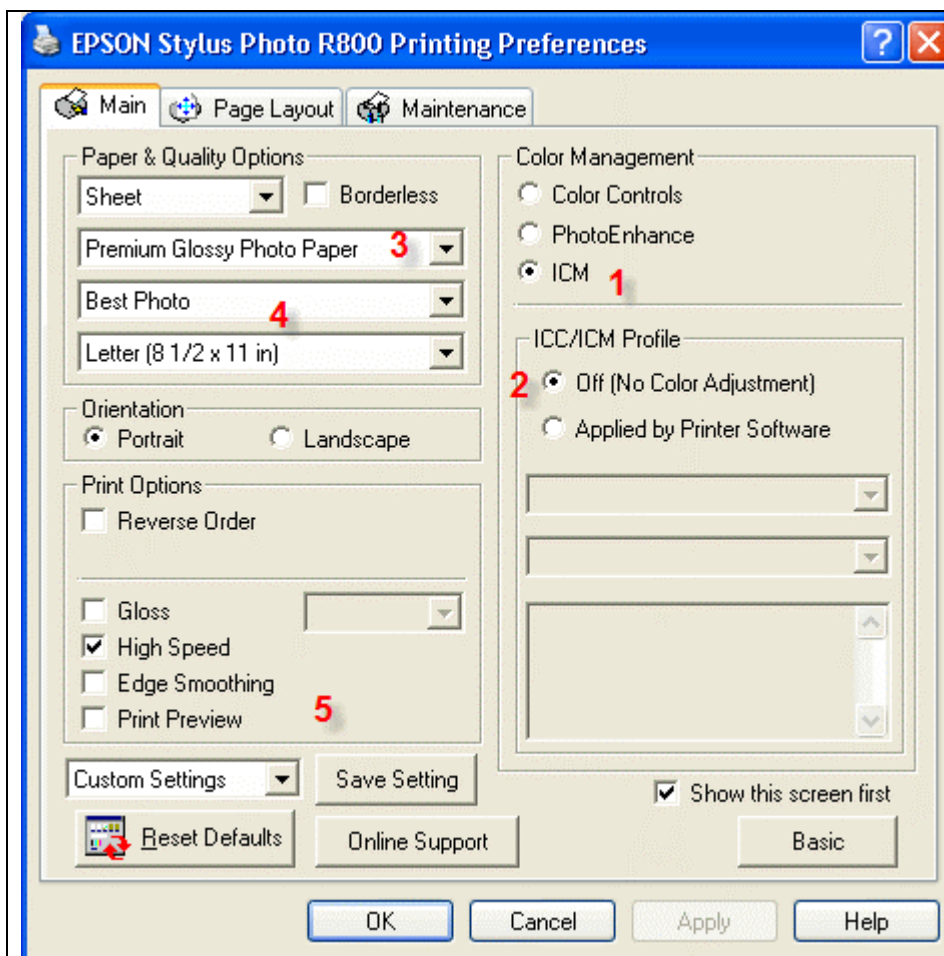
When you install the profile, it will show up in Photoshop's profile menu as:

**RR Denali SmiGlos R2400 Bst.icc**

Below are the required printer driver settings for this profile. You must make sure all of the settings are correct to achieve optimum print quality.

**EPSON SETTINGS**

<u>Parameter</u>	<u>Required Setting</u>
Paper Setting	Premium SemiGloss Photo Paper
Quality	Best Photo
Color Management	Click ICM then Off (No Color Adjustment)



**Epson PC driver  
screenshot showing the  
settings for this profile.**

- 1 – Set ICM
- 2 – Color Adj to OFF
- 3 – Select suggested media type
- 4 – Quality to Best Photo or 1440dpi
- 5 – High speed and edge smoothing are optional

