

Profile Usage Instructions

Red River 68lb. UltraPro Gloss
Epson R2400

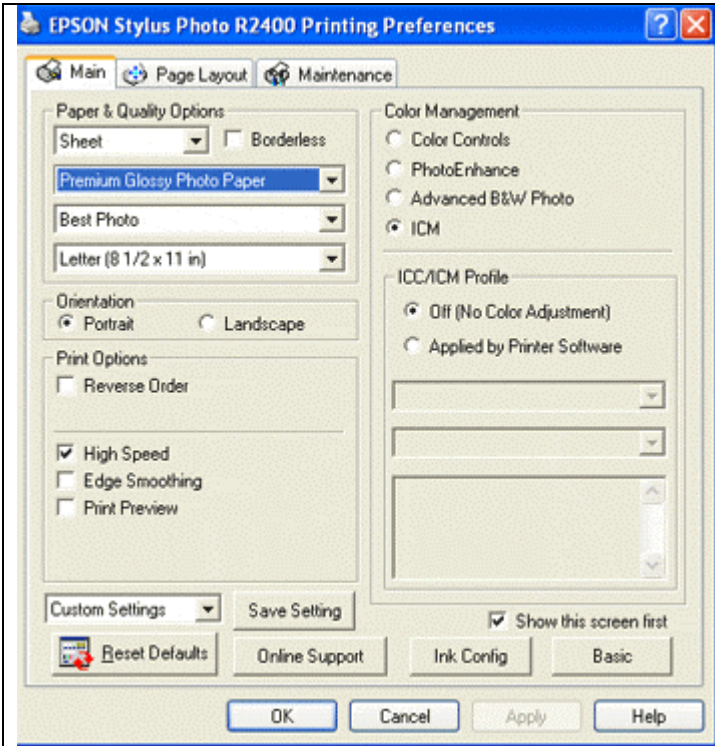
For information on how to use color profiles, read Red River’s “Color Profile Usage” and Epson’s “How to use ICC profiles”. These are available for download at www.redriverpaper.com/profiles

When you install the profile, it will show up in Photoshop’s profile menu as:

RR UltraPro Gloss Ep2400 Best Photo

Below are the required printer driver settings for this profile. You must make sure all of the settings are correct to achieve optimum print quality.

Parameter	Required Setting
Paper Setting	Epson Premium Glossy Photo Paper
Quality	Best Photo
Color Management	Click ICM then Off (No Color Adjustment)
High Speed	ON
Edge Smoothing	OFF



PC driver screenshot showing the settings for this profile.

Special Notes:

High Speed – Turning high speed off should not effect the color balance or quality of the image
Edge Smoothing – Like high speed, you may experiment with this setting in the ON position

Refer to www.redriverpaper.com/profiles for any updates.
Technical support for color profiles is limited to the documents included in the profiles section of www.redriverpaper.com