

Profile Usage Instructions

For information on how to use color profiles, read Red River's "Color Profile Usage" and Epson's "How to use ICC profiles". These are available for download at www.redriverpaper.com/profiles

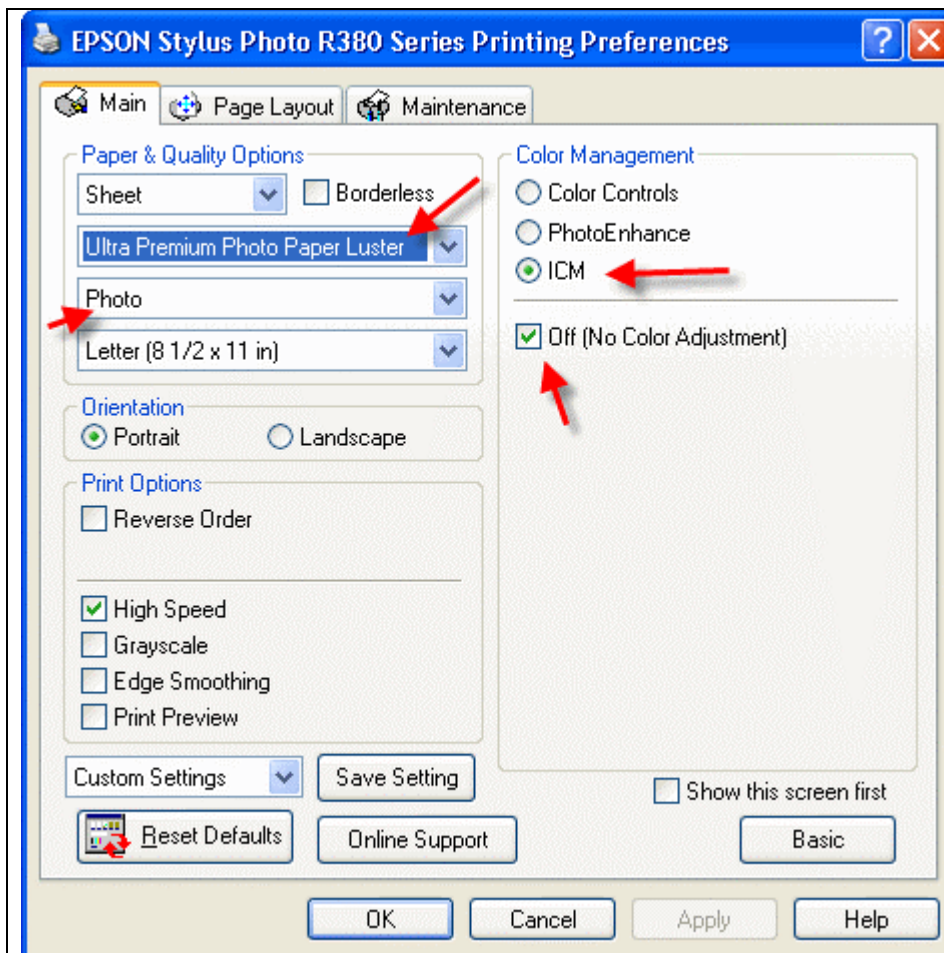
When you install the profile, it will show up in Photoshop's profile menu as:

RR Arctic Pol Satin EpR380.icc

Below are the required printer driver settings for this profile. You must make sure all of the settings are correct to achieve optimum print quality.

EPSON SETTINGS

Parameter	Required Setting
Paper Setting	Ultra Premium Photo Paper Luster
Quality	Photo
Color Management	Click ICM then Off (No Color Adjustment)



Epson PC driver screenshot showing the settings for this profile.

Set suggested media type

Color Adj to OFF

Quality to Photo

High speed, finest detail and edge smoothing are optional