

NOT FOR USE WITH FRONT FEED ONLY DESKTOP PRINTERS

Recommended Printer Driver Settings

Packed PRINT SIDE UP

Weight: 96lb. (360gsm)

Thickness: 16mil

Media Type: Alpha-cellulose

Coating: Microporous

Surface: High Gloss

Printable: Glossy side

Back: Plain paper

OBA: OBA present

AVAILABLE SIZES

4x6	5x7
8.5x11	8.5x14
13x19	Note Cards

Epson

Premium Glossy Photo Paper or Ultra Premium Photo Paper Gloss

Canon

Photo Paper Plus Glossy or Photo Paper Plus Glossy II
Canon PRO-100 – Other Glossy Photo Paper

HP Printers

Not recommended for desktop HP printers

Lexmark

Glossy Photo Paper

Print Quality Setting Recommendations

Epson

Choose Best Photo or 1440dpi quality. Choose Photo if Best Photo is not available. We recommend avoiding Photo RPM as print quality is only marginally better while slowing your print time significantly.

Canon

Choose the High quality setting. On the sliding scale, you will choose 2 or 1 depending on which is the highest available.

High Speed Printing

We recommend leaving High Speed turned OFF for best possible print quality.

Printer Color Profiles and Color Management

Red River Paper offers free printer color profiles for our products and many different inkjet printers. Profiles are small data files, used by software like Photoshop, that help you get better and more consistent print quality. Profiles are specific to paper, ink, and printer combinations.

Go to www.redriverpaper.com/profiles to download profiles.

Learn to install profiles: www.redriverpaper.com/installprofiles

Learn to use profiles: www.redriverpaper.com/useprofiles

Some important notes on using this very heavy paper

Feed one sheet at a time!

Set your thick media setting. You may need to give the paper a gentle push during the feed cycle.

[Tips on how to feed heavy and thick papers are here](#)

What Printers Can Use This Paper

This paper is ideal for printers with single sheet specialty feed paths.

Printers with this capability include but are not limited to:

Epson Pro printers

Epson 13" wide desktop models such as the P600 and R3000.

Canon PROGRAF and PRO model printers

DO NOT use this paper if you have

Epson Artisan 7XX or 8XX series printers.

Epson Workforce printers.

Any HP printer

Any printer that only feeds paper from the feed cassette

BEFORE THE PRINT

Handling

Avoid touching the print side of this paper. Handle sheets by their edge, or wear lint free gloves. Like any fine photographic media, the surface is delicate and should be treated with care.

What side is the print side?

Red River Paper products are packed print side up in the box.

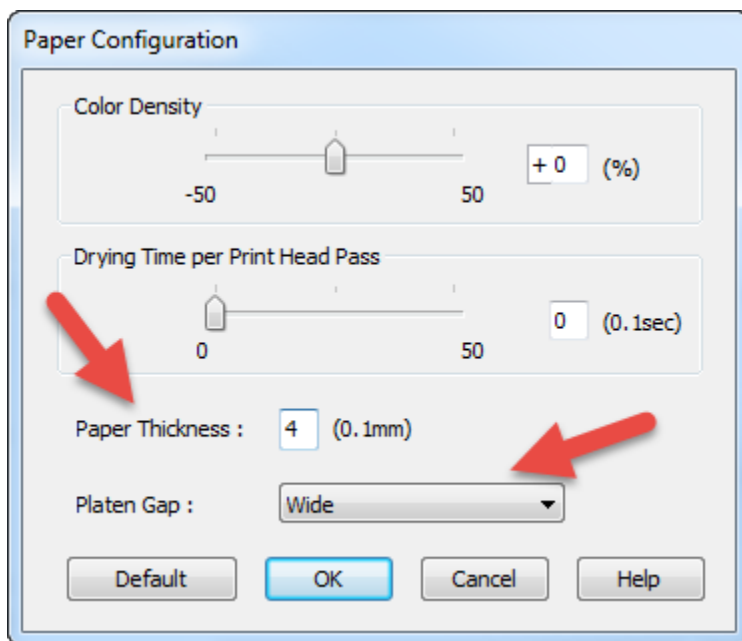
Paper Feeding

We recommend feeding this paper into your printer one sheet at a time. If your printer has a single sheet specialty feed option, use that path. Make sure to set your extra thick paper printing or platen gap to the widest setting. Some setting information is below. Go to www.redriverpaper.com/feed for more information.

Epson Pro Printers – P-Series, R3000, 3xxx, 4xxx, 7xxx, 9xxx Series

In the printer properties locate and click on the “Paper Config” button. Mac users will find “Advanced Media Control” in the drop down menus of the Print dialog.

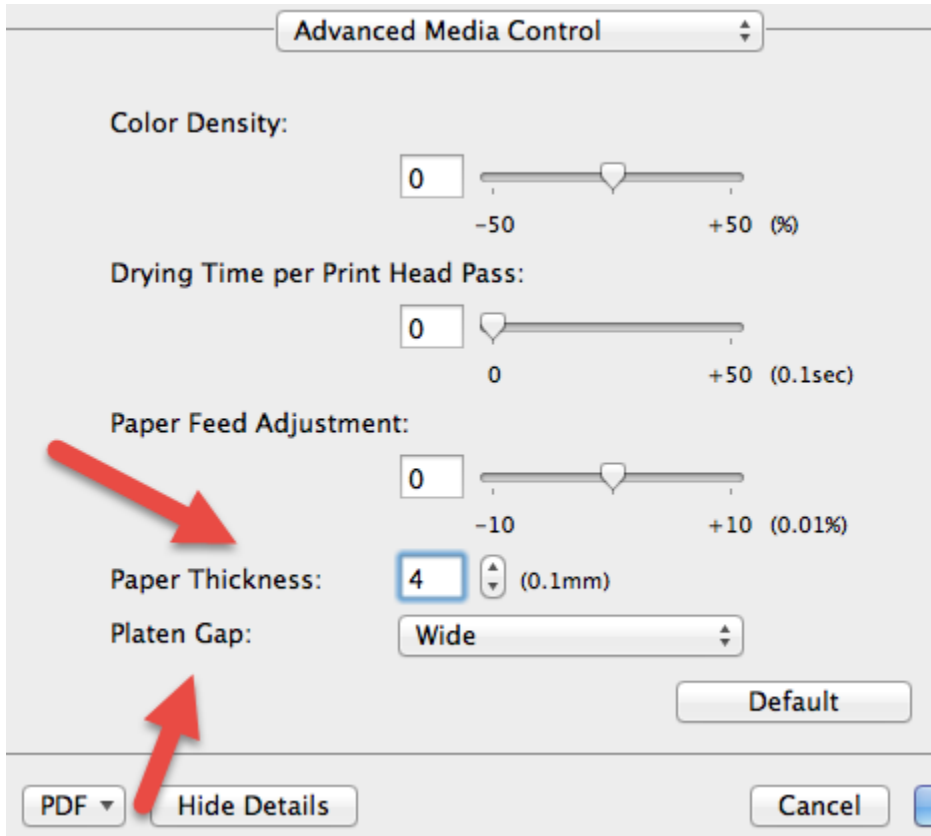
Windows Example



Platen Gap – Set to Wide or Wider if that option is available.

Paper Thickness – Set to 4

Mac Example

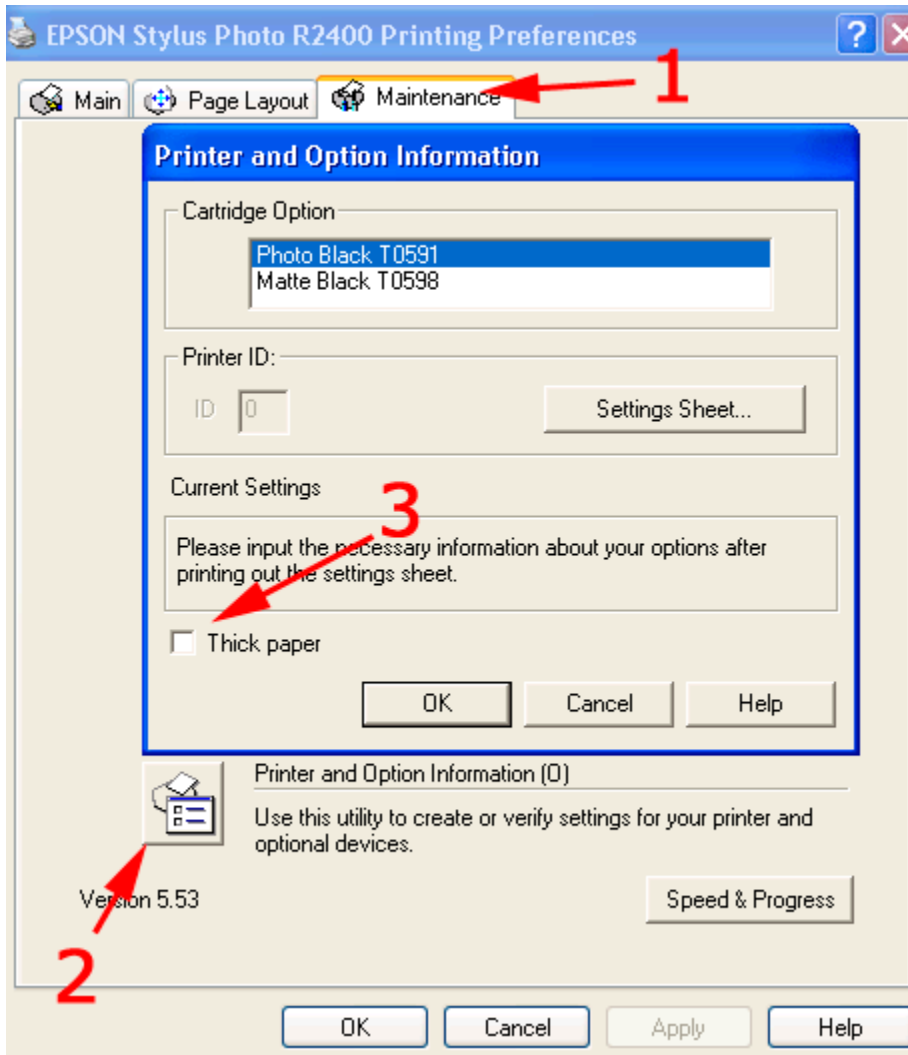


Platen Gap – Set to Wide or Wider if that option is available.

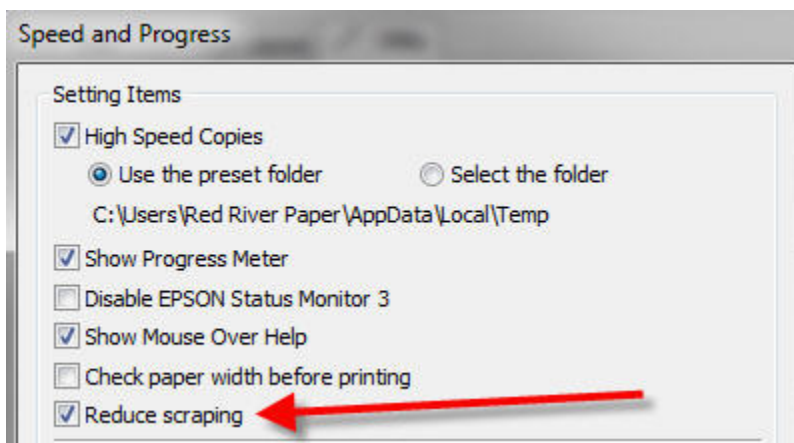
Paper Thickness – Set to 4

Epson Desktop Printers

Set the printer to Thick Paper. Go to the Maintenance tab in printer properties, click the Printer and Option Information button, then click the Thick Paper checkbox. Turn this off when you go back to standard thickness paper.

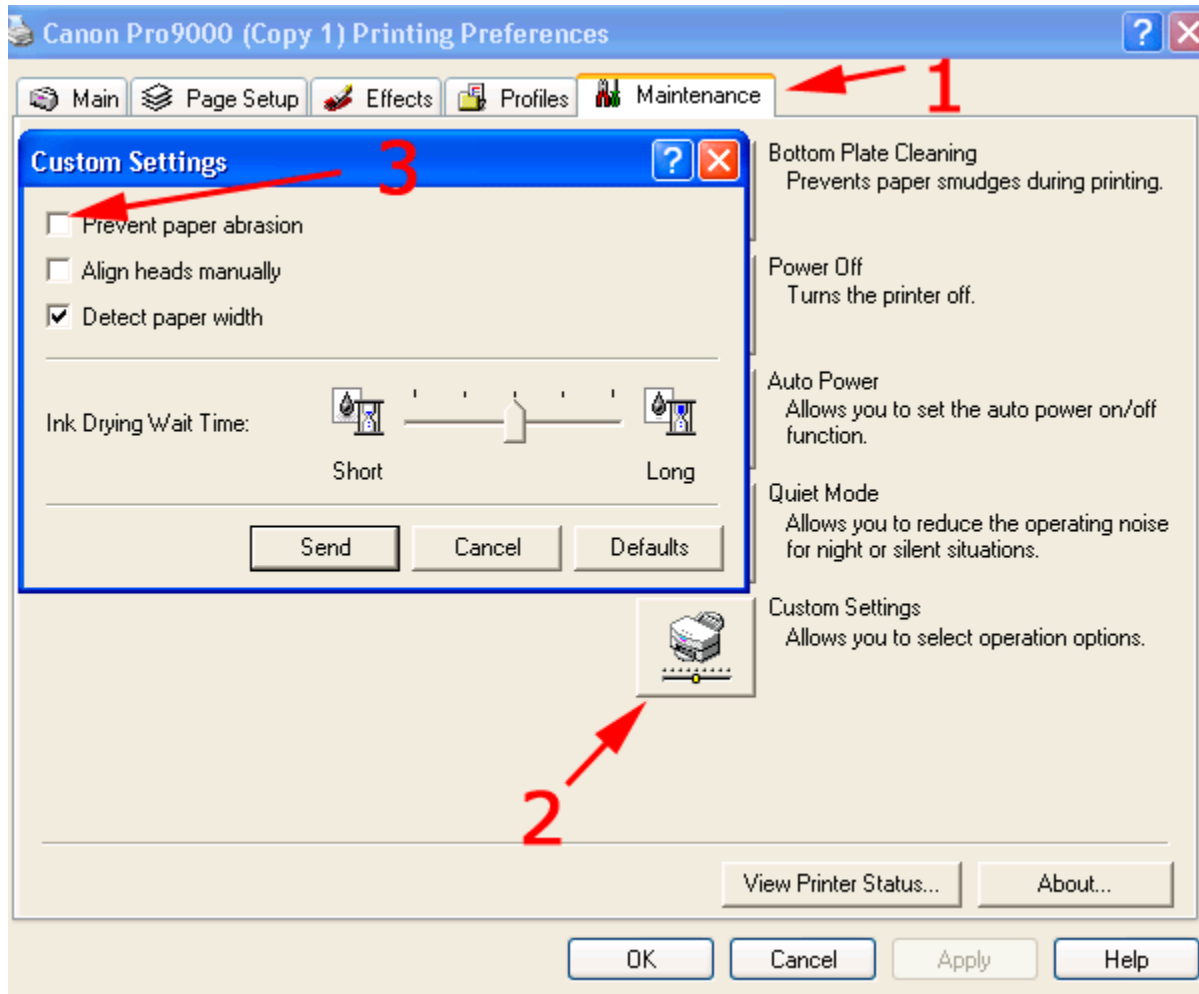


Some printers, like the Epson R2000 have the setting hidden away in the Speed and Progress menu which is located on the Utility Tab. In this case the feature you need to select is called "Reduce scraping".



Canon Desktop Printers

Set printer to Prevent Paper Abrasion. Go to the Maintenance Tab and click on Custom Settings. In the next menu, choose the Prevent Paper Abrasion option. Turn this off when you go back to standard thickness paper.



Paper Storage and Handling

1) Store your inkjet paper in a closed box (original packaging preferred) until you are ready to use it. Protecting the paper from light, swings in humidity, dust, and atmospheric contaminants is important.

2) Handle the paper by the edges or underside to avoid damaging the coated surface. Try and avoid touching the printable surface of an inkjet paper. This is especially true of photo base papers like glossy and satin. Oil, dirt, and other contaminants can alter the inkjet coating which could adversely affect print quality.

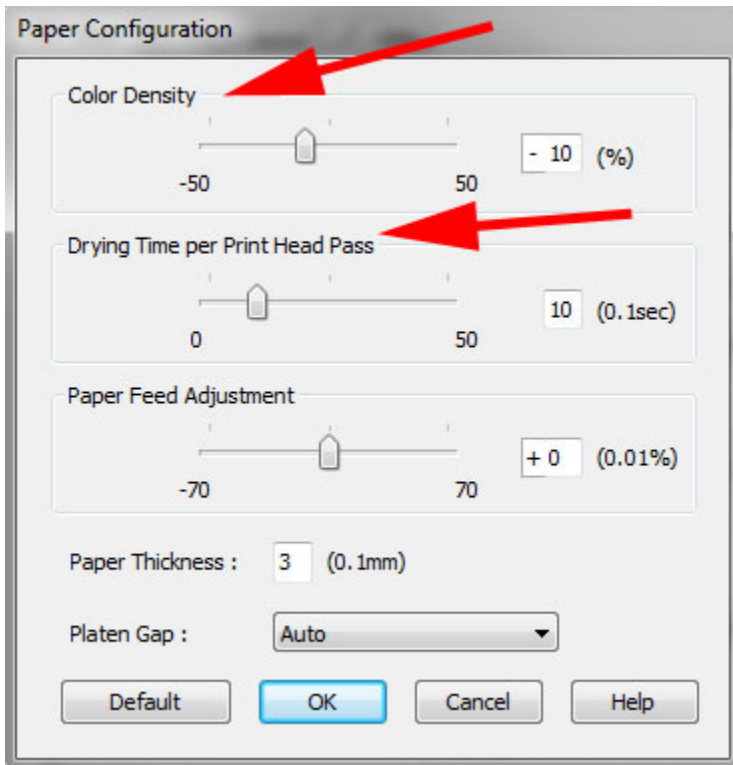
3) Watch for dust and debris. Because inkjet paper is not packed in a "clean room" environment, there may be dust or paper debris on the coated surface. If left there, you may see blemishes or white blank spaces on your printed image.

It is a good idea to:

- Use a specialty anti-static brush to remove any debris from the surface of the paper
- Use canned air to clean the interior of your printer often to remove paper dust, etc.

POTENTIAL ISSUES

In limited cases, heavy saturation in dark areas can result in slow drying. This can in-turn lead to “star wheel marks” that are visible as light points in dark areas of your print. This is mostly an issue with UltraChrome K3 Epson printers. To eliminate the marks, you can slow the print process and slightly reduce ink density using the Paper Configuration menu found in the printer driver.



Above is an example of the Paper Configuration controls of an Epson 3880. Most wide format Epson printers have this same setup.

The “Color Density” control is a fine ink throttle. To begin, set it at -10%.

Next set the “Dry Time per Print Head Pass” to 10. This puts a short pause between print head passes, giving the ink time to dry before passing under the star wheels.

AFTER THE PRINT IS COMPLETE

Allow inkjet prints to dry completely before being handled.

All inkjet papers “outgas” during the drying process. These gasses result from water and other chemicals in inkjet ink evaporating from the inkjet coating. Avoid stacking prints for at least 30 minutes after printing. The longer you leave prints to dry before handling the better.

To speed up the outgassing process put a piece of plain copy paper on top of your print. The dry copy paper will help pull out ink moisture from your prints.

Since copy paper is acid free, it is a suitable interleaving sheet for print stacking.

One more word about print stacking; If you are using MATTE or FINE ART PAPERS with pigment inks, an interleaving sheet is highly recommend for print storage or transport. Black pigment inks rub off and scuff easily on matte and cotton papers. Keeping prints from touching is always a good idea.

PRINT STORAGE

- 1) Do not expose prints to direct sunlight. Heat and UV radiation will greatly accelerate fade and paper damage.
- 2) Always store prints in a climate controlled environment. 75 degrees Fahrenheit and 50% relative humidity are the benchmarks you should look to when storing prints. Moving air is a big factor in print fade. Try to keep prints in an acid free storage box or print sleeve / bag.
- 3) If you are going to store prints in plastic bags or sleeves, look for plastic material that is made from biaxially oriented *polypropylene*. Avoid using any materials that contain polyethylene or plasticizers which can cause rapid yellowing of your paper.

FRAMING AND STORAGE

Mark Rogers, president of [Frame Destination](#) offered some tips for framing your inkjet prints.

- 1) Just like post-printing, always allow your print to dry completely before framing. If prints continue to outgas in the frame, you might see a white residue appear on the inside of the glass. This can be easily cleaned if this happens.
- 2) Always use archival quality mounts and mat boards. Make says that 100% cotton Rising Museum Board for mounting prints.
- 3) Avoid exposing your print to heat. Frame Destination recommends low-heat or pressure sensitive dry mounting substrates. Never use a high-heat substrate, and always test a sample before mounting the actual artwork.
- 4) Do not spray mount. Inkjet inks are sensitive to moisture and changes in humidity.
- 5) Do not use tape to adhere the picture to the mounting board as the adhesive in the tape can cause damage to the edges of the picture.
- 6) Use [photo corners or strips](#) to mount the print to the mounting board. When it comes to mounting and framing your valuable photos, photo corners are an excellent choice. It may be tempting to take the easy way out and use spray or liquid adhesives for your photo mounting, but there is a danger to your photos. Adhesives may react with the chemicals used to produce the image in your photograph, causing substantial damage.
- 7) Use UV filtered glass in your frame. Glass is important for a number of reasons. Stopping UV light is quite important because most inkjet papers have Optical Brightener content. These OBAs "burn out" when exposed to UV light. When this happens you are left with the original color of the paper, which is often neutral white to yellowish. This is why old photos begin to look yellow over time.

Second, glass (along with the *sealing the back of the frame*) will protect your prints from atmospheric contaminants. Airborne chemicals and pollution are thought to play a large role in inkjet print fade.

More Questions?

Contact Red River Paper with any questions about our products or your printing needs.

support@redriverpaper.com / 888-248-8774

Better Papers for Better Prints

Red River was founded in 1997 and has over 45 years' experience in fine papers. We hand pick fine paper from mills around the world and bring them to our plant in Dallas, Texas. From here, we convert the paper to various sheet sizes and rolls, as well as add special features available only from Red River. We offer wholesale direct pricing, and the convenience of **over 30 different inkjet papers** under one roof. Red River Paper invests the time and money to understand and test the latest inkjet technology from Epson, Canon, HP, Lexmark and others so you do not have to.

The Great Inkjet Paper Guide



Picking the right inkjet paper can be a challenge. You can choose from over 400 different inkjet papers worldwide. With this selection comes precious little in the way of guidance and education on picking the paper one for YOU. To help bridge this gap, Red River Paper brings you the Great Inkjet Paper Guide.

www.redriverpaper.com/great

Inkjet Greeting Cards



Turn your photos, artwork, and designs into custom greeting and note cards. Cards are amazingly easy to set up using the photo editing software you already own. **Cards cost less than \$1.00 including paper, ink, and envelope!**

The cards are precision cut to popular sizes and pre-scored for easy folding. Add matching envelopes, clear sleeves, and display boxes for a complete card presentation. ****FREE templates, tips, and printing tricks on our site****

www.redriverpaper.com/cardshop

Be Someone's Inkjet Hero!

Your prints are sure to wow friends, family, and colleagues. Of course, you cannot share all your secrets when they ask why your prints look so great. However, you can **be their Inkjet Hero and introduce them to Red River Paper**. We will happily answer their questions about papers, picking the right printer, and printing with no obli

