



MEDIA SETTING RECOMMENDATIONS PAPER HANDLING GUIDE

Download the Full Handling Guide
www.redriverpaper.com/guides

Palo Duro® Etching

Using a printer profile?

Use the instructions that came with the profile for setting recommendations.

Recommended Printer Driver Settings

Epson - Cold Press Natural or Velvet Fine Art Paper

Canon Desktop - Matte Photo Paper

Canon PRO (Prograf) - Heavyweight Fine Art Paper

Thick Paper Handling Tips

Epson Desktop – Activate the thick paper (envelope) setting

Epson Pro Models - Paper thickness = 4 and platen gap to wide

Canon - Activate “Prevent Paper Abrasion” setting

Print Quality Setting Recommendations

Epson

Choose Best Photo or 1440dpi quality. Choose Photo if Best Photo is not available. We recommend avoiding Photo RPM as print quality is only marginally better, while slowing your print time significantly.

Canon

Choose the High-Quality setting. On the sliding scale, you will choose 2 or 1 depending on which is the highest available.

HP Print Quality

Choose Best in the print quality drop down. Avoid Maximum DPI - print quality is only marginally better while slowing your print time significantly.

High Speed Printing

We recommend leaving High Speed turned OFF for best possible print quality.

Printer Color Profiles and Color Management

Red River Paper offers free printer color profiles for our products and many different inkjet printers. Profiles are small data files, used by software like Photoshop, that help you get better and more consistent print quality. Profiles are specific to paper, ink, and printer combinations.

Go to www.redriverpaper.com/profiles to download profiles.

Learn to install profiles: www.redriverpaper.com/installprofiles

Learn to use profiles: www.redriverpaper.com/useprofiles

Product Stats

Packed Print Side Up

Weight:

315gsm

Thickness:

21mil

Media Type:

100% Cotton Rag

Coating:

Micro-porous

Surface:

Matte textured

Printable:

One-sided

OBA:

No OBAs present

Reverse Side:

Light inkjet coating

Available Sizes:

See website

BEFORE THE PRINT

Avoid touching the print side of this paper. Handle sheets by their edge, or wear lint free gloves. Like any fine photographic media, the surface is delicate and should be treated with care.


What side is the print side?

Red River Paper products are packed print side up in the box.

Paper Feeding

 **If your printer has a single sheet specialty feed option, use that path.**

If you are going to use the auto-load paper tray, feed this paper into your printer one sheet at a time.

 Make sure to set your extra thick paper printing or platen gap to the widest setting. Some setting information is below. Go to www.redriverpaper.com/feed for more information.

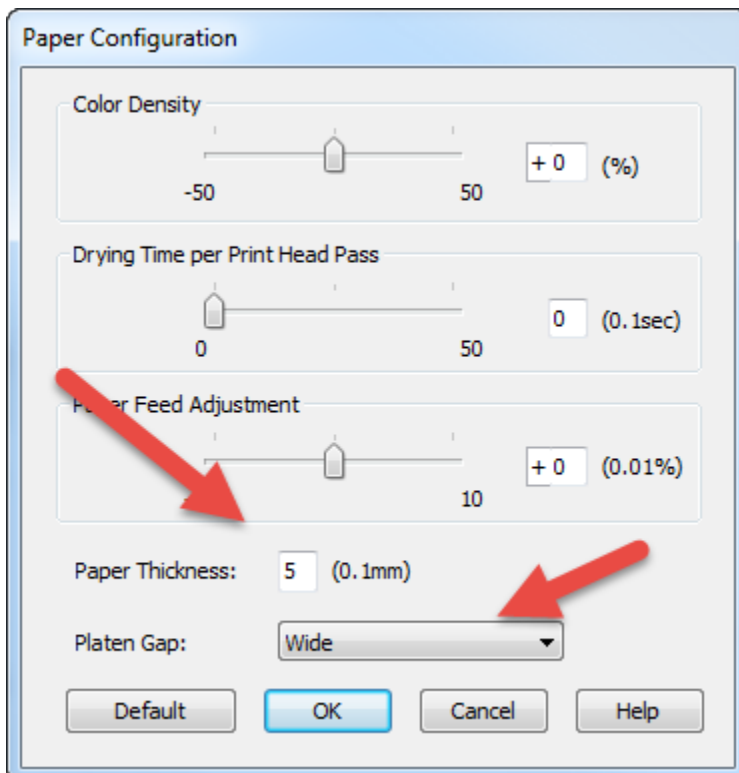
Epson Pro Printers – P-Series, R3000, 3xxx, 4xxx, 7xxx, 9xxx Series

In the printer properties locate and click on the “Paper Config” button. Mac users will find “Advanced Media Control” in the drop down menus of the Print dialog.

Windows Example

Platen Gap – Set to Wide

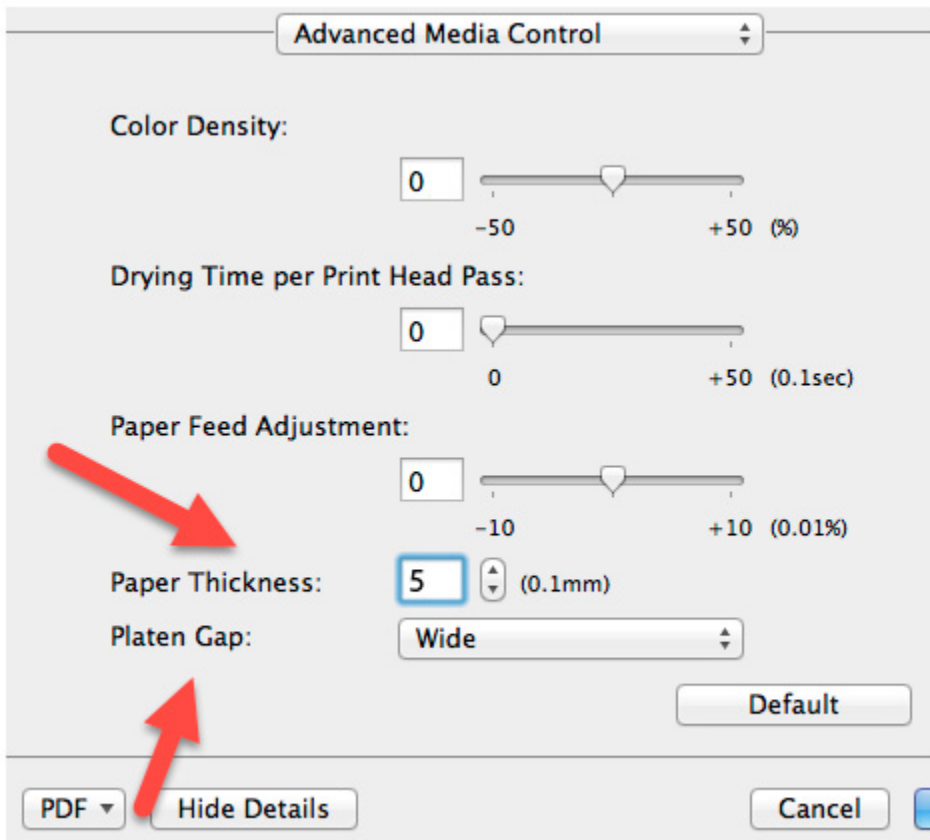
Paper Thickness – Set to 5



Mac Example

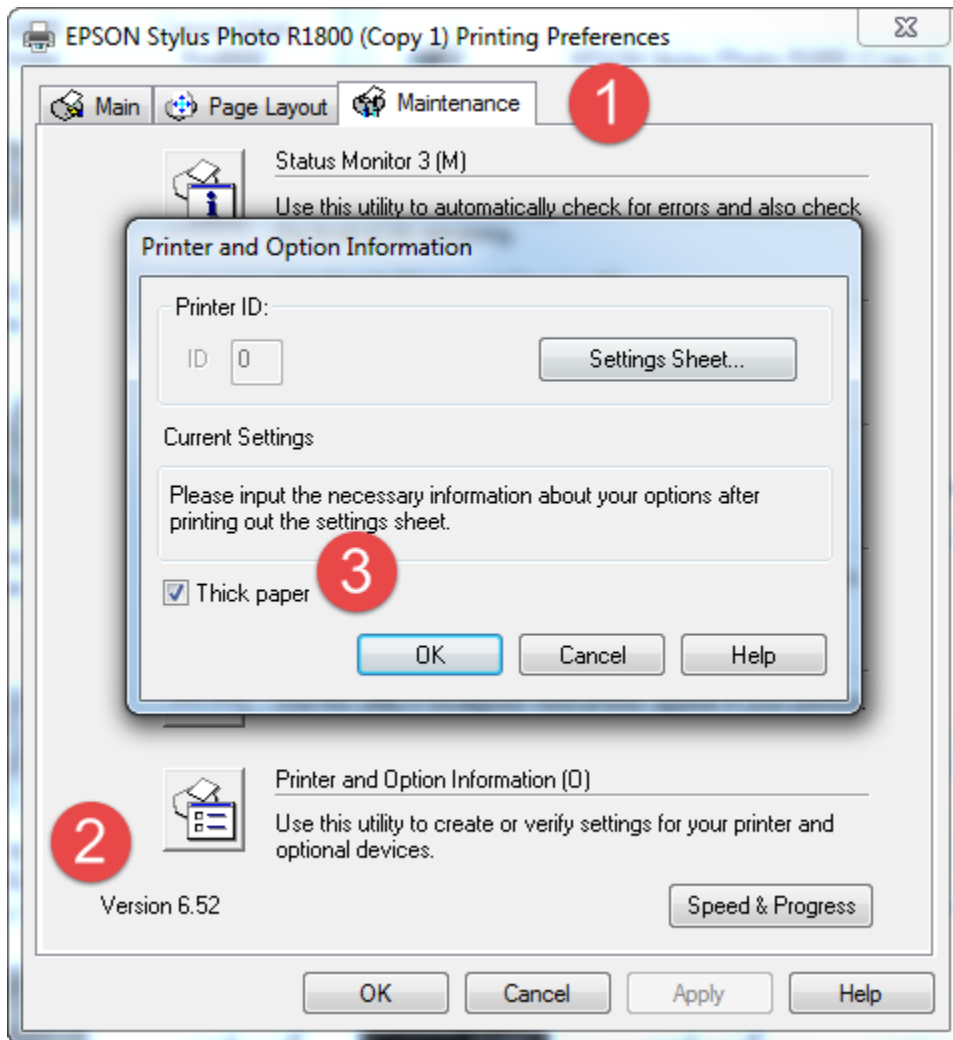
Platen Gap – Set to Wide

Paper Thickness – Set to 5

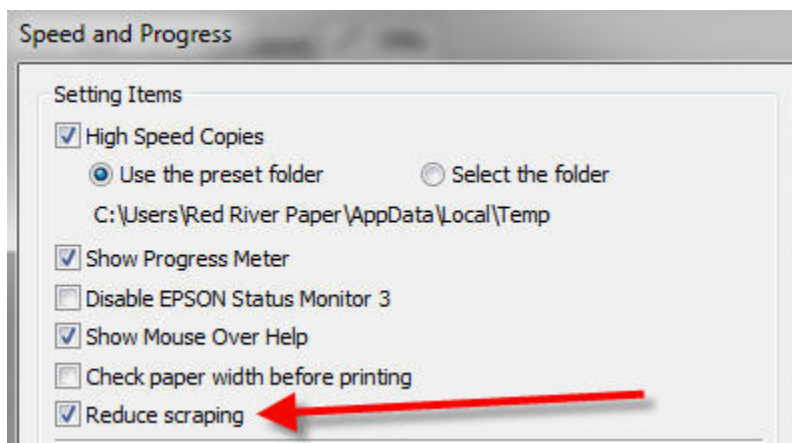


Epson Desktop Printers

Set the printer to Thick Paper. Go to the Maintenance tab in printer properties, click the Printer and Option Information button, then click the Thick Paper checkbox. Turn this off when you go back to standard thickness paper.



Some printers, like the Epson R2000 have the setting hidden away in the Speed and Progress menu which is located on the Utility Tab. In this case the feature you need to select is called “Reduce scraping”.

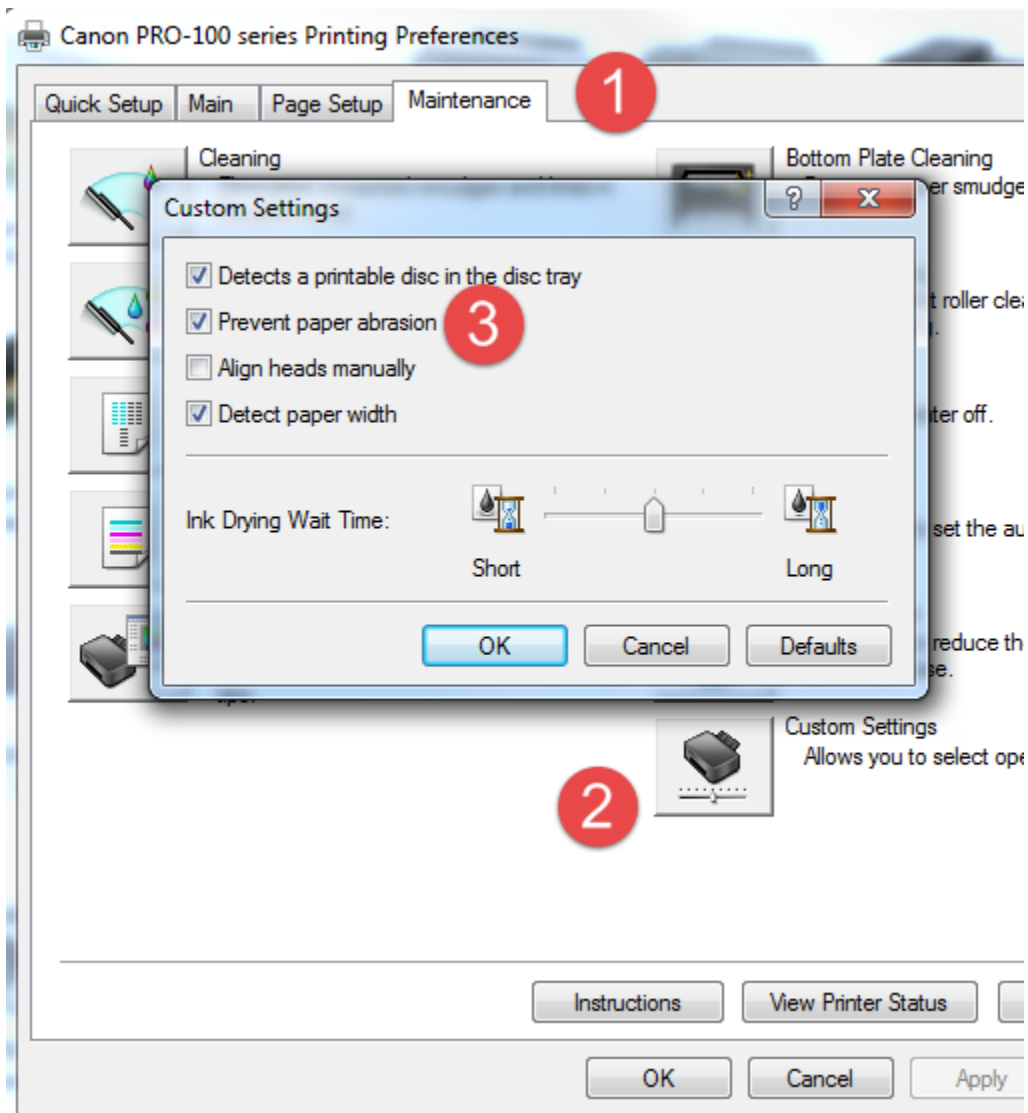


Canon Desktop Printers

The following Canon printers have a specialty paper feed path. Refer to your manual for how to use this single sheet path with Palo Duro Etching.

Pro-9000, Pro-9500, PRO-100, PRO-1, PRO-10, PRO-1000

Set printer to Prevent Paper Abrasion. Go to the Maintenance Tab and click on Custom Settings. In the next menu, choose the Prevent Paper Abrasion option. Turn this off when you go back to standard thickness paper.



PAPER HANDLING & STORAGE

- 1) Store your inkjet paper in a closed box (original packaging preferred) until you are ready to use it. Protecting the paper from light, swings in humidity, dust, and atmospheric contaminants is important.
- 2) Handle the paper by the edges or underside to avoid damaging the coated surface. Try and avoid touching the printable surface of an inkjet paper. This is especially true of photo base papers like glossy and satin. Oil, dirt, and other contaminants can alter the inkjet coating which could adversely affect print quality.
- 3) Watch for dust and debris. Because inkjet paper is not packed in a "clean room" environment, there may be dust or paper debris on the coated surface. If left there, you may see blemishes or white blank spaces on your printed image.

It is a good idea to:

- Use a specialty anti-static brush to remove any debris from the surface of the paper
- Use canned air to clean the interior of your printer often to remove paper dust, etc.

AFTER THE PRINT IS COMPLETE

Allow inkjet prints to dry completely before being handled.

All inkjet papers "outgas" during the drying process. These gasses result from water and other chemicals in inkjet ink evaporating from the inkjet coating. Avoid stacking prints for at least 30 minutes after printing. The longer you leave prints to dry before handling the better.

To speed up the outgassing process put a piece of plain copy paper on top of your print. The dry copy paper will help pull out ink moisture from your prints.

Since copy paper is acid free, it is a suitable interleaving sheet for print stacking.

One more word about print stacking; If you are using MATTE or FINE ART PAPERS with pigment inks, an interleaving sheet is highly recommend for print storage or transport. Black pigment inks rub off and scuff easily on matte and cotton papers. Keeping prints from touching is always a good idea.

PRINT STORAGE

- 1) Do not expose prints to direct sunlight. Heat and UV radiation will greatly accelerate fade and paper damage.
- 2) Always store prints in a climate controlled environment. 75 degrees Fahrenheit and 50% relative humidity are the benchmarks you should look to when storing prints. Moving air is a big factor in print fade. Try to keep prints in an acid free storage box or print sleeve / bag.
- 3) If you are going to store prints in plastic bags or sleeves, look for plastic material that is made from biaxially oriented *polypropylene*. Avoid using any materials that contain polyethylene or plasticizers which can cause rapid yellowing of your paper.

FRAMING AND STORAGE

Mark Rogers, president of [Frame Destination](#) offered some tips for framing your inkjet prints.

- 1) Just like post-printing, always allow your print to dry completely before framing. If prints continue to outgas in the frame, you might see a white residue appear on the inside of the glass. This can be easily cleaned if this happens.
- 2) Always use archival quality mounts and mat boards. Make says that 100% cotton Rising Museum Board for mounting prints.
- 3) Avoid exposing your print to heat. Frame Destination recommends low-heat or pressure sensitive dry mounting substrates. Never use a high-heat substrate, and always test a sample before mounting the actual artwork.
- 4) Do not spray mount. Inkjet inks are sensitive to moisture and changes in humidity.
- 5) Do not use tape to adhere the picture to the mounting board as the adhesive in the tape can cause damage to the edges of the picture.
- 6) Use [photo corners or strips](#) to mount the print to the mounting board. When it comes to mounting and framing your valuable photos, photo corners are an excellent choice. It may be tempting to take the easy way out and use spray or liquid adhesives for your photo mounting, but there is a danger to your photos. Adhesives may react with the chemicals used to produce the image in your photograph, causing substantial damage.
- 7) Use UV filtered glass in your frame. Glass is important for a number of reasons. Stopping UV light is quite important because most inkjet papers have Optical Brightener content. These OBAs "burn out" when exposed to UV light. When this happens you are left with the original color of the paper, which is often neutral white to yellowish. This is why old photos begin to look yellow over time.

Second, glass (along with the *sealing the back of the frame*) will protect your prints from atmospheric contaminants. Airborne chemicals and pollution are thought to play a large role in inkjet print fade.

Better Papers for Better Prints

Red River was founded in 1997 and we have over 100 years of experience in fine papers. Our paper experts hand pick fine paper from mills around the world and bring them to our Dallas, Texas facility where we convert the paper to various sheet sizes and rolls. As an added bonus, we provide special features available only from Red River. Take advantage of **wholesale direct pricing**, and the convenience of **over 30 different inkjet papers** under one roof. Red River Paper invests the time and money to understand and test the latest inkjet technology from Epson, Canon, HP, Lexmark and others, so all you have to do is enjoy the benefits.

How to Pick the Right Paper for Your Images

With over 400 different inkjet papers worldwide to choose from, picking the right inkjet paper can be a challenge. This selection comes with precious little in the way of **guidance and education on picking the one paper for YOU.**



To help bridge this gap, Red River Paper brings you the Great Inkjet Paper Guide.

www.redriverpaper.com/great

Inkjet Greeting Cards

Turn your photos, artwork, and designs into custom greeting and note cards. Cards are amazingly easy to set up using the photo editing software you already own.

Cards cost less than \$1.00 including paper, ink, and envelope!

The cards are precision cut to popular sizes and pre-scored for easy folding. Add matching envelopes, clear sleeves, and display boxes for a complete card presentation.



FREE templates, tips, and printing tricks on our site

www.redriverpaper.com/cardshop

Be Someone's Inkjet Hero!

Your prints are sure to wow friends, family, and colleagues. Of course, you cannot share all your secrets when they ask why your prints look so great. However, you can **be their Inkjet Hero and introduce them to Red River Paper.**

We will happily answer their questions about papers, picking the right printer, and printing with no obligation.

