

86lb. Pecos River Gloss Duo Handling Guide

This paper is heavy at 320gsm, and thick at 14mil (.014"). As such, you will need to follow some guidelines for successful printing, handling, and storage.

Storage

Keep unused paper in a closed box until ready for printing.

This paper is sensitive to humidity and may curl in some circumstances.

Handling

Please try and avoid touching the surface of this paper before printing.

If the paper curls when removed from the box, first consider ways to bring the relative humidity in your printing room to around 50% if possible.

Before feeding the sheet, give it a slight curl in the opposite direction to flatten it out as much as possible. Non-latex gloves can be worn for this task if you wish.

Drying Time

After printing the first side, allow the paper to dry about 15 minutes before printing the second side. This minimizes the chance for scuffing.

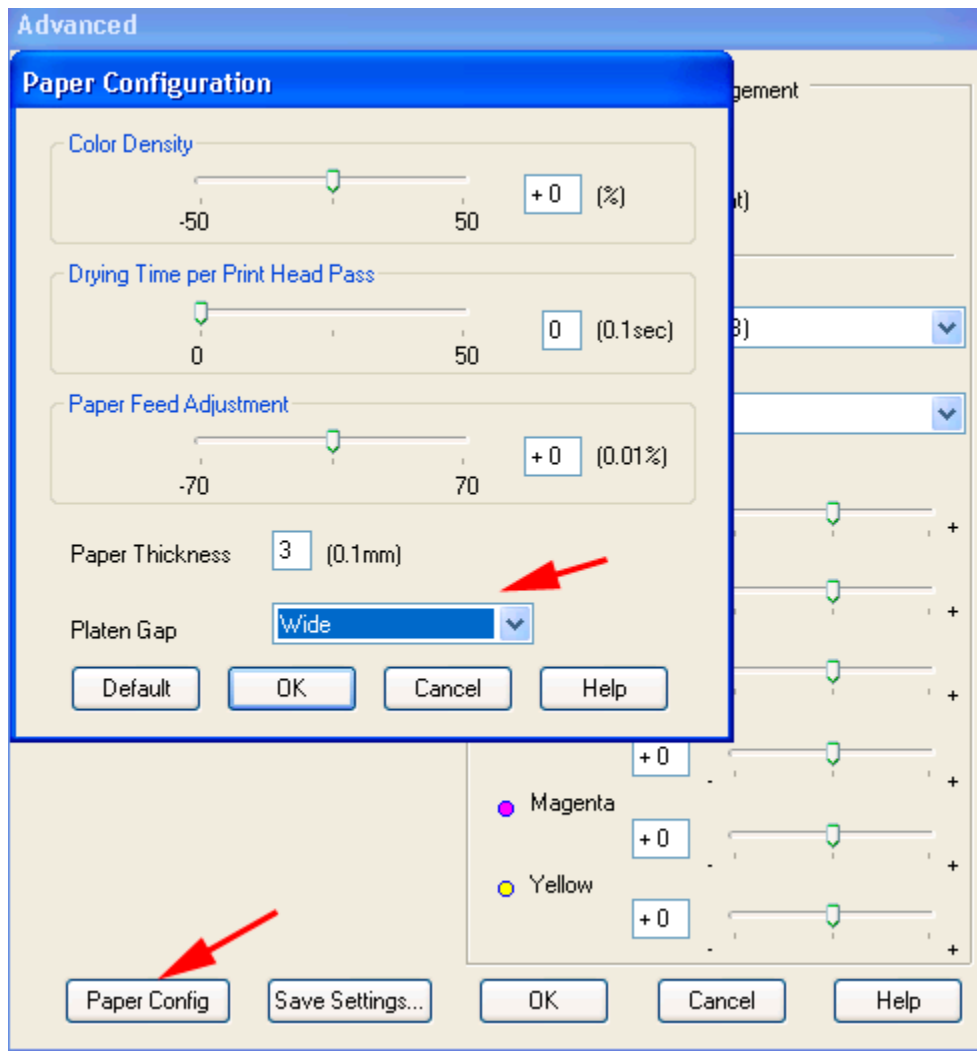
Paper Feeding

We recommend feeding this paper into your printer one sheet at a time.

If your printer has features to help with extra thick paper printing, please use them with this paper. Some setting information is below.

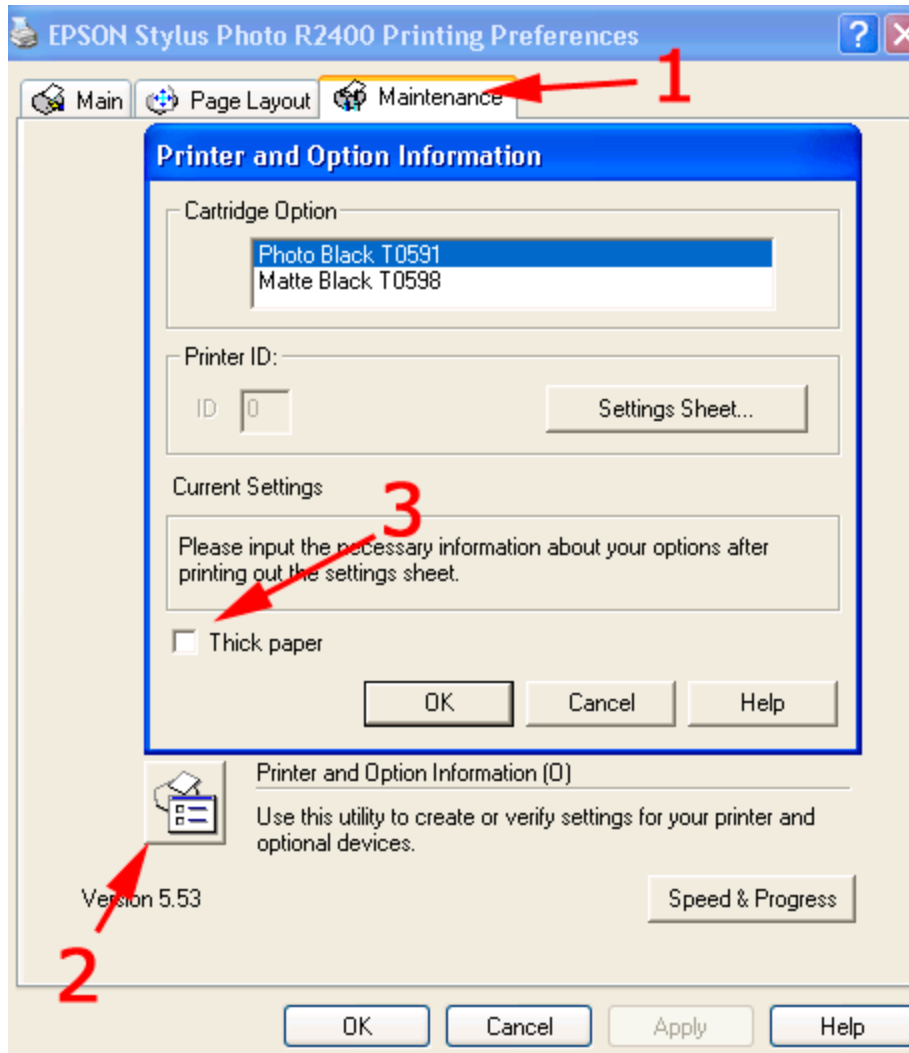
Epson Pro Printers

Set the PLATEN GAP to Wide or Wider. See your printer manual for more about the settings.



Epson Desktop Printers

Set the printer to Thick Paper. Go to the Maintenance tab in printer properties, click the Printer and Option Information button, then click the Thick Paper checkbox. Turn this off when you go back to standard thickness paper.



Canon Desktop Printers

Set printer to Prevent Paper Abrasion. Go to the Maintenance Tab and click on Custom Settings. In the next menu, choose the Prevent Paper Abrasion option. Turn this off when you go back to standard thickness paper.

