

Profile Usage Instructions

For information on how to use color profiles, read Red River's "Color Profile Usage" and Epson's "How to use ICC profiles". These are available for download at www.redriverpaper.com/profiles

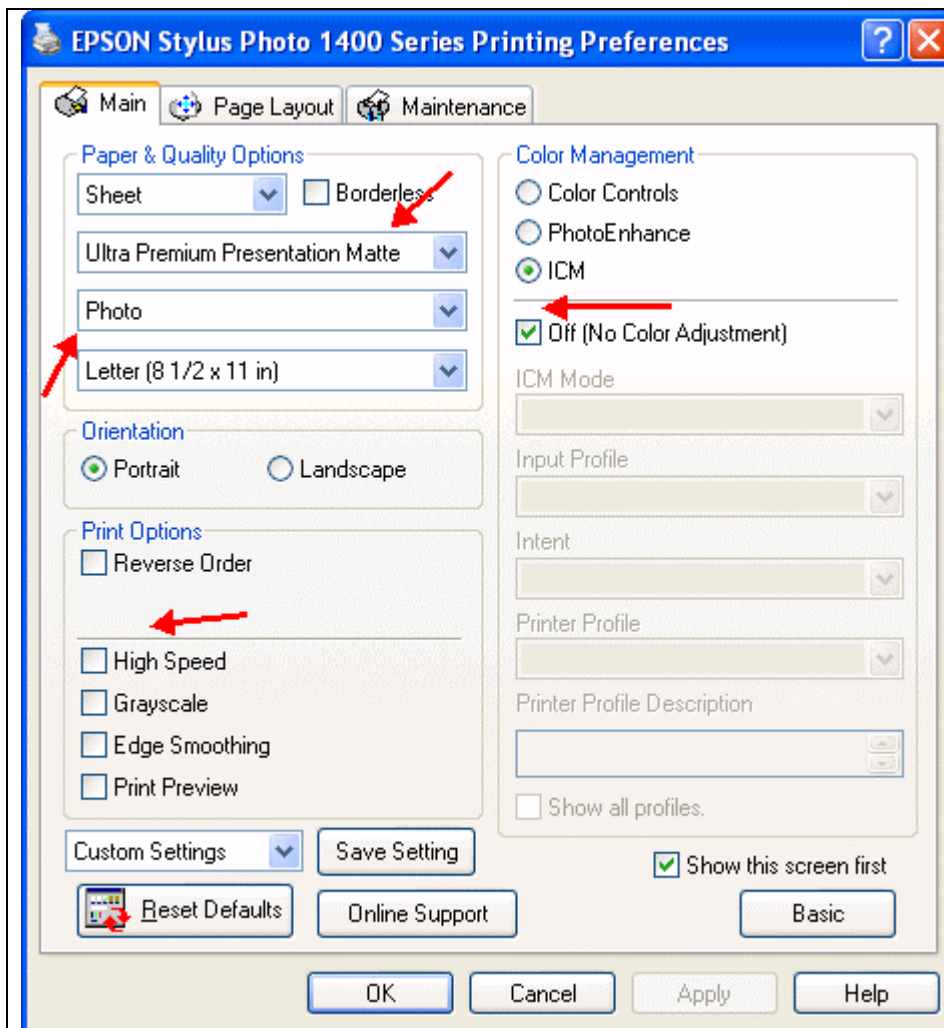
When you install the profile, it will show up in Photoshop's profile menu as:

RR Aurora FA Wht Ep1400 Claria.icc

Below are the required printer driver settings for this profile. You must make sure all of the settings are correct to achieve optimum print quality.

EPSON SETTINGS

| Parameter | Required Setting |
|------------------|--|
| Paper Setting | Ultra Premium Presentation Matte |
| Quality | Photo |
| Color Management | Click ICM then Off (No Color Adjustment) |



Epson PC driver screenshot showing the settings for this profile.

- 1 – Set suggested media type
- 2 – Color Mgt to OFF
- 3 – Quality to Photo
- 4 – Profiles made for High Speed Printing OFF. The choice is optional for you.