

Profile Usage Instructions

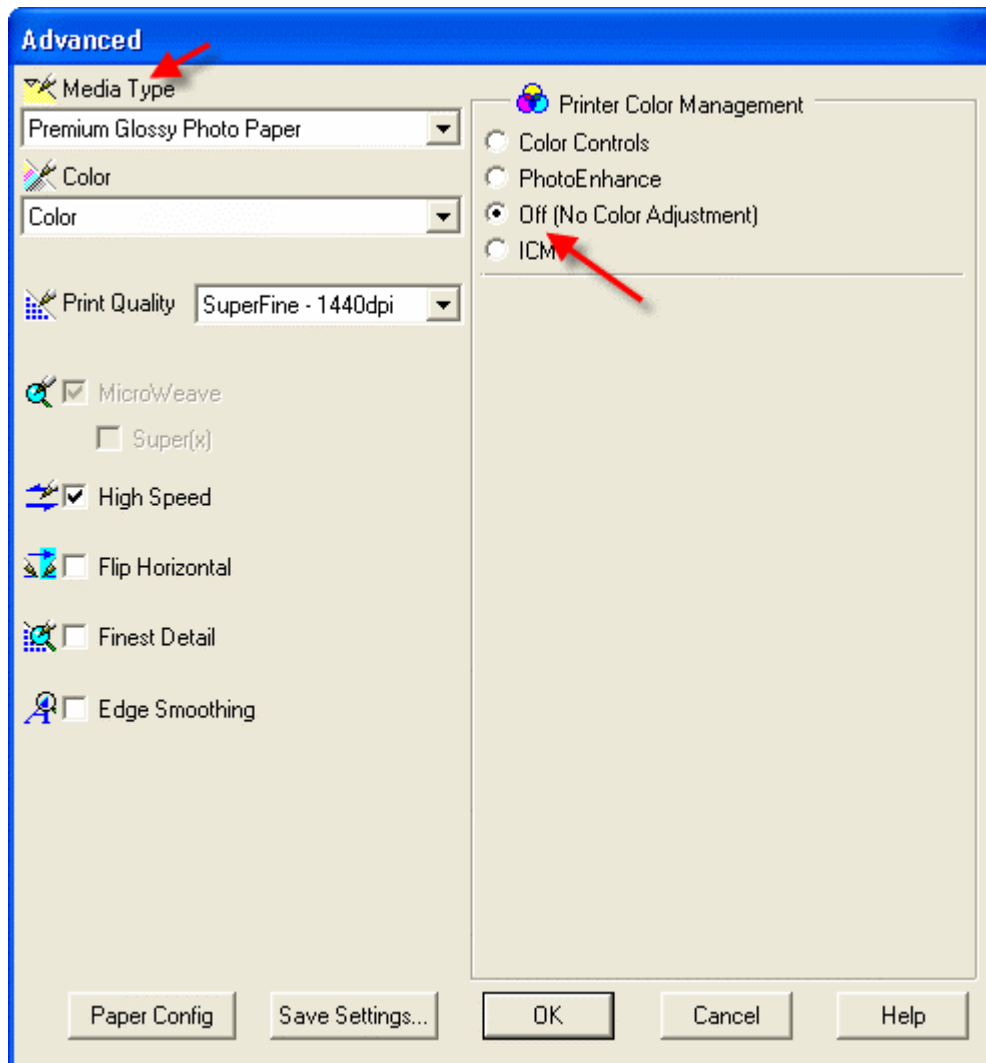
For information on how to use color profiles, read Red River's "Color Profile Usage" and Epson's "How to use ICC profiles". These are available for download at www.redriverpaper.com/profiles

When you install the profile, it will show up in Photoshop's profile menu as:

RR UPGloss 2.0 Ep7600_9600.icc

Below are the required printer driver settings for this profile. You must make sure all of the settings are correct to achieve optimum print quality.

<u>Parameter</u>	<u>Required Setting</u>
Paper Setting	Premium Glossy Photo Paper
Quality	Superfine - 1440dpi
Color Management	Click ICM then Off (No Color Adjustment)



- 1 – Set suggested media type
- 2 – Click ICM then check Off (No Color Adjustment)
- 3 – Quality set to Best Photo or better
- 4 – High speed, finest detail and edge smoothing are optional