

## Profile Usage Instructions

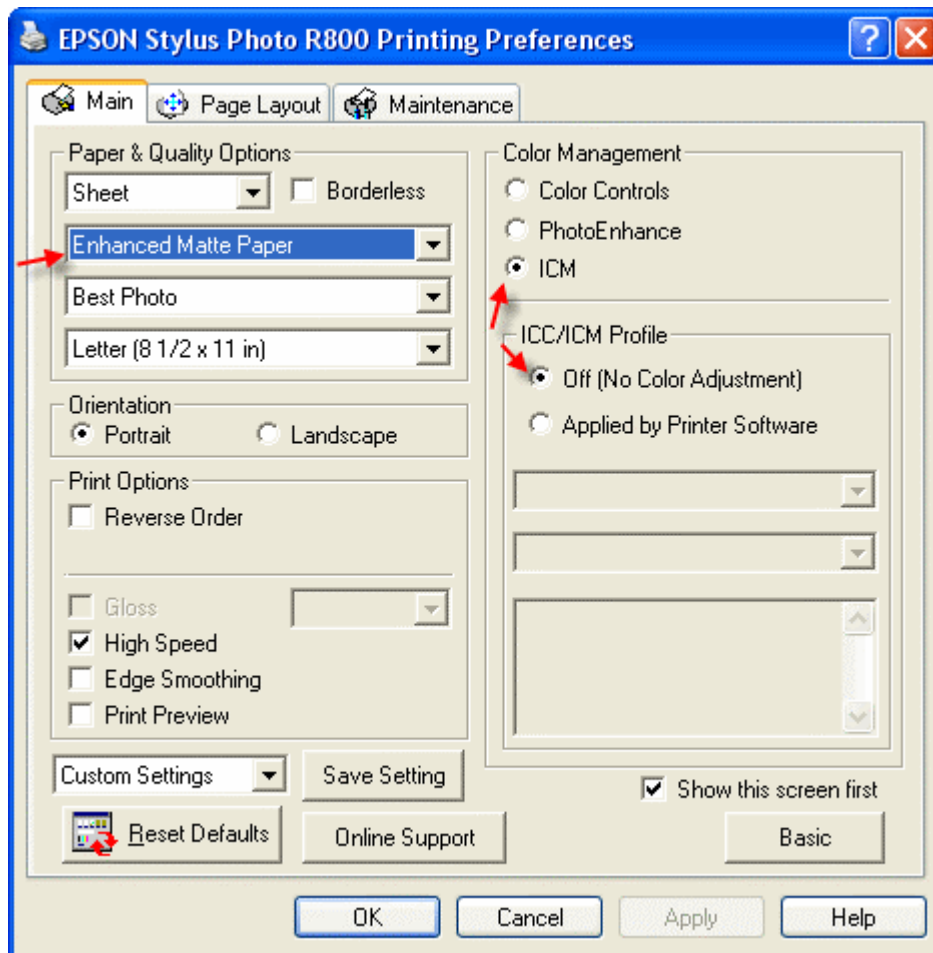
For information on how to use color profiles, read Red River's "Color Profile Usage" and Epson's "How to use ICC profiles". These are available for download at [www.redriverpaper.com/profiles](http://www.redriverpaper.com/profiles)

When you install the profile, it will show up in your software profile menu as:

### RR PremMat 2.0 EpR1800\_R800

Below are the required printer driver settings for this profile. You must make sure all of the settings are correct to achieve optimum print quality.

Parameter	Required Setting
Paper Setting	Enhanced Matte Paper
Quality	Best Photo
Color Management	Click ICM then Off (No Color Adjustment)



- 1 – Set suggested media type
- 2 – Click ICM then check "Off (No Color Adjustment)"
- 3 – Quality set to Photo or better
- 4 – High speed, finest detail and edge smoothing are optional

