

## Profile Usage Instructions

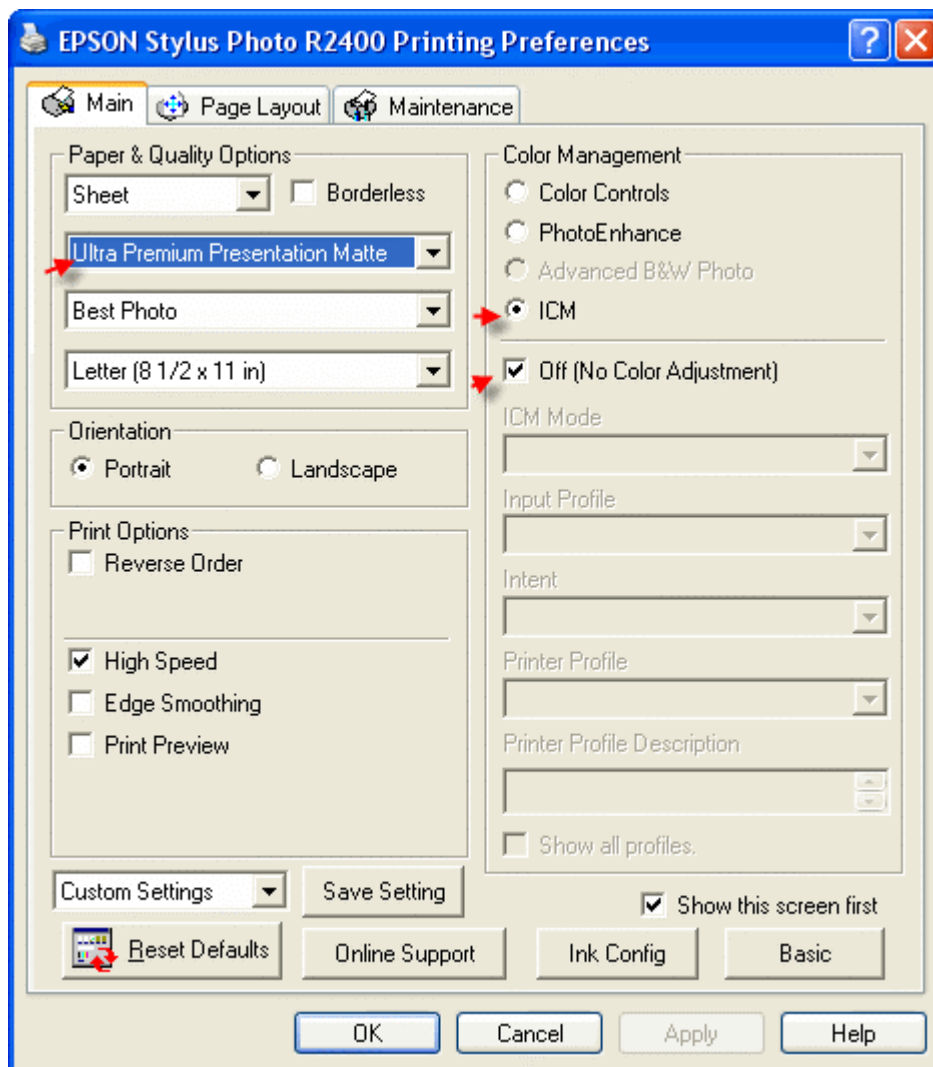
For information on how to use color profiles, read Red River's "Color Profile Usage" and Epson's "How to use ICC profiles". These are available for download at [www.redriverpaper.com/profiles](http://www.redriverpaper.com/profiles)

When you install the profile, it will show up in your software profile menu as:

### RR Prem Matt 2.0 EpR2400 PK.icc (PHOTO BLACK INK)

Below are the required printer driver settings for this profile. You must make sure all of the settings are correct to achieve optimum print quality.

| Parameter        | Required Setting                         |
|------------------|--|
| Paper Setting    | Ultra Premium Presentation Matte         |
| Quality          | Best Photo                               |
| Color Management | Click ICM then Off (No Color Adjustment) |



- 1 – Set suggested media type
- 2 – Click ICM then check "Off (No Color Adjustment)"
- 3 – Quality set to Photo or better
- 4 – High speed, finest detail and edge smoothing are optional