

## MATTE BLACK INK

### Profile Usage Instructions Aurora Fine Art NATURAL Epson 2200 Matte Black Ink

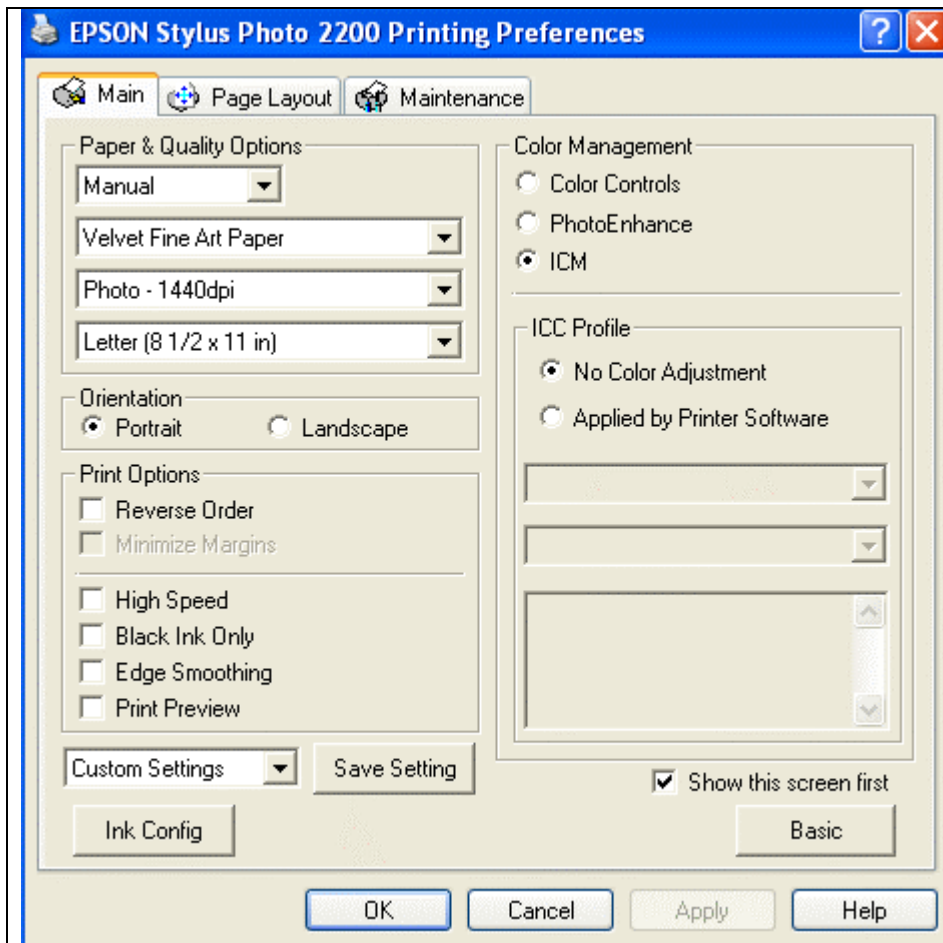
For information on how to use color profiles, read Red River's "Color Profile Usage" and Epson's "How to use ICC profiles". These are available for download at [www.redriverpaper.com/profiles](http://www.redriverpaper.com/profiles)

When you install the profile, it will show up in Photoshop's profile menu as:

**RR Aurora FA Nat Ep2200 MK.icc**

Below are the required printer driver settings for this profile. You must make sure all of the settings are correct to achieve optimum print quality.

Parameter	Required Setting
Paper Setting	Velvet Fine Art
Quality	Photo – 1440dpi
Color Management	Click ICM then Off (No Color Adjustment)
High Speed	ON or OFF
Edge Smoothing	OFF



**PC driver screenshot showing the settings for this profile.**

#### Special Notes:

When choosing the Velvet Fine Art media setting, the driver will alert you and change to roll mode. Just force it to sheet by using the first drop down box under paper and quality options.

More....

High Speed – Turning high speed off should not effect the color balance or quality of the image.

Edge Smoothing – Like high speed, you may experiment with this setting in the ON position.

Refer to [www.redriverpaper.com/profiles](http://www.redriverpaper.com/profiles) for any updates. Technical support for color profiles is limited to the documents included in the profiles section of [www.redriverpaper.com](http://www.redriverpaper.com)