

MATTE BLACK VERSION

Profile Usage Instructions Aurora Fine Art NATURAL Epson 4800 – Matte Black Ink

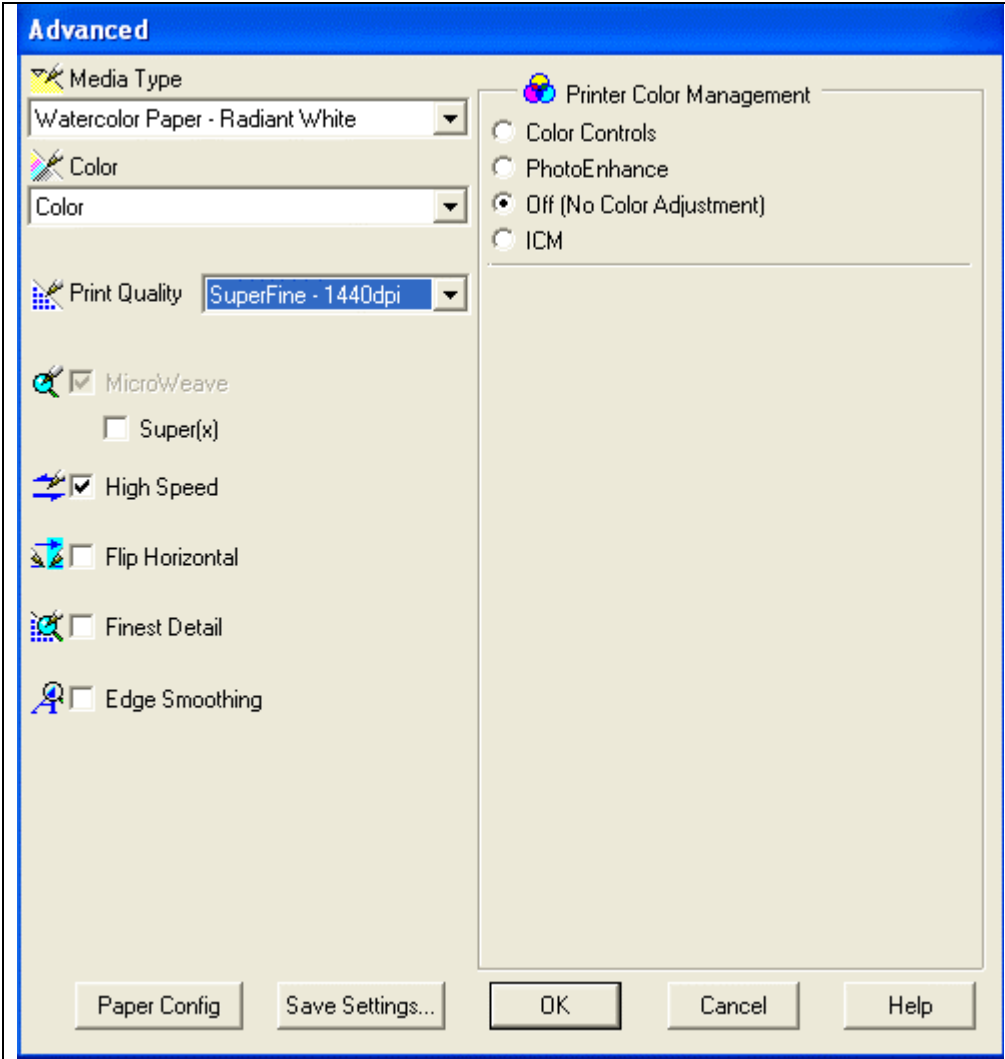
For information on how to use color profiles, read Red River’s “Color Profile Usage” and Epson’s “How to use ICC profiles”. These are available for download at www.redriverpaper.com/profiles

When you install the profile, it will show up in Photoshop’s profile menu as:
RR Aurora FA Nat Ep4800 MK.icc

Below are the required printer driver settings for this profile. You must make sure all of the settings are correct to achieve optimum print quality.

The media setting below (Velvet Fine Art) requires you to feed this paper in the manual slot. Refer to your manual for how this is accomplished.

Parameter	Required Setting
Paper Setting	Watercolor Paper Radiant White
Quality	Superfine – 1440dpi
Color Management	Off (No Color Adjustment)
High Speed	OFF or ON
Edge Smoothing	OFF



PC driver screenshot showing the settings for this profile.

Special Notes:

- High Speed – Turning high speed off should not effect the color balance or quality of the image
- Edge Smoothing – Like high speed, you may experiment with this setting in the ON position
- Refer to www.redriverpaper.com/profiles for any updates. Technical support for color profiles is limited to the documents included in the profiles section of www.redriverpaper.com