

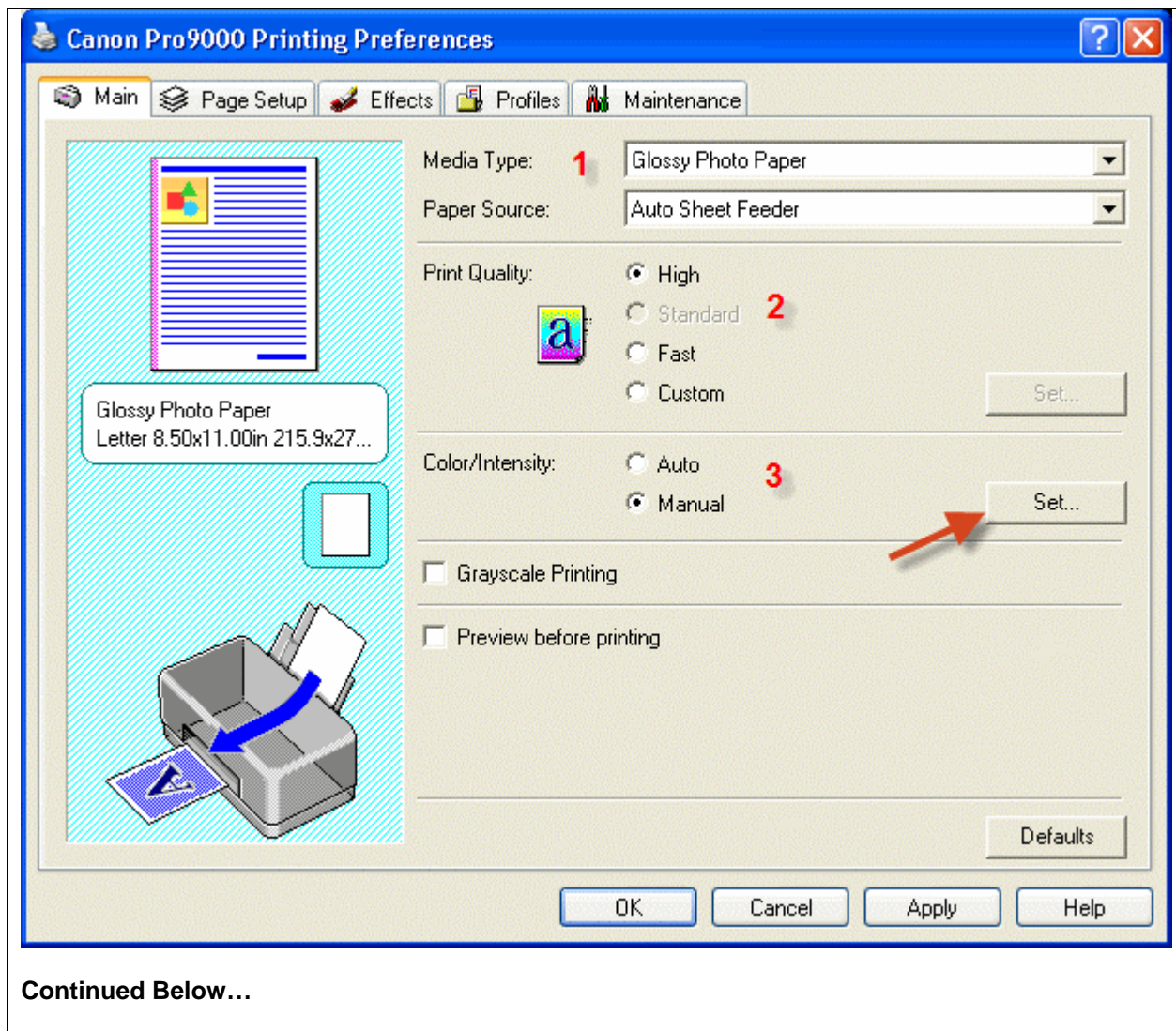
PROFILE INSTRUCTIONS

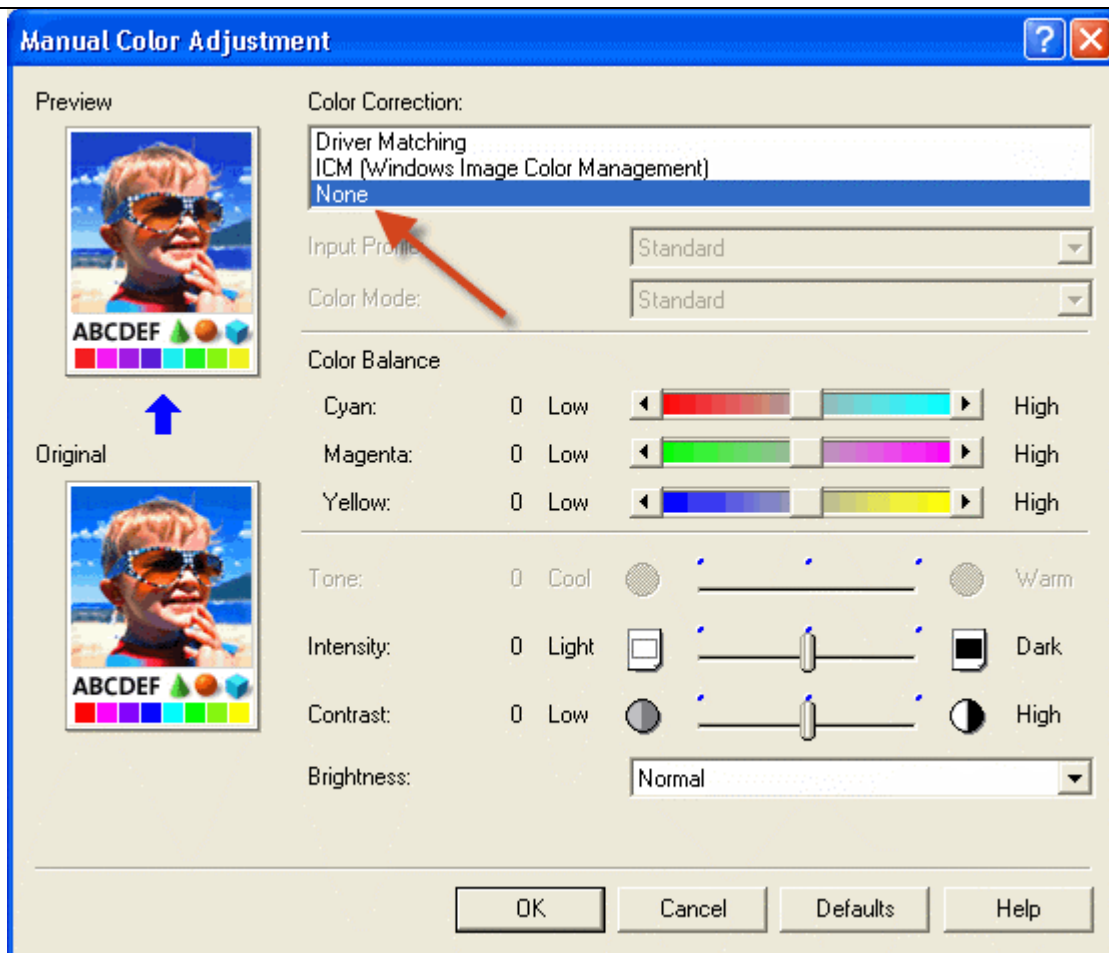
For information on how to use color profiles, read Red River's "Color Profile Usage" and Epson's "How to use ICC profiles".

When you install the profile, it will show up in your ICC aware application (ex. Photoshop) profile menu as:

RR Aurora FA White ip6700d.icc

Parameter	Required Setting
1. Paper Setting	MATTE PHOTO PAPER
2. Quality	Best available
3. Color Management	Manual Color Adjustment – Print Type Set to "None"





Set Color Correction to None

Special Notes:

Refer to www.redriverpaper.com/profiles for any updates. Technical support for color profiles is limited to the documents included in the profiles section of www.redriverpaper.com