



Printer Color Profile Instructions

Color profiles are data files that contain a description of how a particular paper, ink, and printer create all colors, shades, and densities. Using a profile will result in more accurate and consistent output.

Printer: Epson Expression XP-15000

Setting Recommendations

Color Correction – See page 3 of this document

Print Quality: High

Support


How to install profiles


www.redriverpaper.com/installprofiles

How to use profiles

www.redriverpaper.com/useprofiles

Some Hints

 The name of the paper you are using will not be listed in the media setting drop down menu in the printer driver. That menu only has the names of manufacturer papers.

 Do not use the printer driver's "Preview before printing feature". It can interrupt the color management process.

THICK / HEAVY PAPERS

Set the printer's thick paper setting for heavy and thick paper. See the chart on page 2.
See support tips on page 4 for thick paper settings.

Top paper tray – We recommend you use the top paper tray heavy and thick media. Examples are Aurora Art, 86lb. Pecos Gloss Duo, and San Gabriel Baryta SemiGloss.

Contact Red River Paper

support@redriverpaper.com
888-248-8774

MEDIA SETTING RECOMMENDATIONS

Paper	Media Setting	Special
68lb. UltraPro Gloss 2.0	Ultra Premium Photo Paper Glossy	
Polar Metallic Papers	Ultra Premium Photo Paper Glossy	
60lb. & 42lb. Pecos River Gloss	Premium Photo Paper Glossy	
96lb. Pecos River Gloss	Premium Photo Paper Glossy	Thick paper setting
86lb. Pecos River Gloss Duo	Premium Photo Paper Glossy	Thick paper setting
UltraPro Luster 300	Ultra Premium Photo Paper Luster	
68lb. UltraPro Satin 4.0	Ultra Premium Photo Paper Luster	
66lb. Palo Duro Satin	Ultra Premium Photo Paper Luster	
66lb. Arctic Polar Satin	Ultra Premium Photo Paper Luster	
Arctic Polar Luster – All Weights	Ultra Premium Photo Paper Luster	
Premium Matte Papers – All Weights	Premium Presentation Paper Matte	
60lb. Polar Matte / Double Sided	Premium Presentation Paper Matte	
88lb. Polar Matte	Premium Presentation Paper Matte	Thick paper setting
60lb. River Linen 2.0	Premium Presentation Paper Matte	
60lb. Paper Canvas	Premium Presentation Paper Matte	
Aurora Art Natural	Velvet Fine Art	Thick paper setting
Aurora Art White	Velvet Fine Art	Thick paper setting
Palo Duro Etching 315	Velvet Fine Art	Thick paper setting
Palo Duro Smooth 310	Ultra Smooth Fine Art Paper	Thick paper setting
Palo Duro Softgloss Rag	Premium Photo Paper Semi-gloss	Thick paper setting
Palo Duro Baryta Fiber 300	Premium Photo Paper Semi-gloss	Thick paper setting
Big Bend Baryta 310	Premium Photo Paper Semi-gloss	Thick paper setting

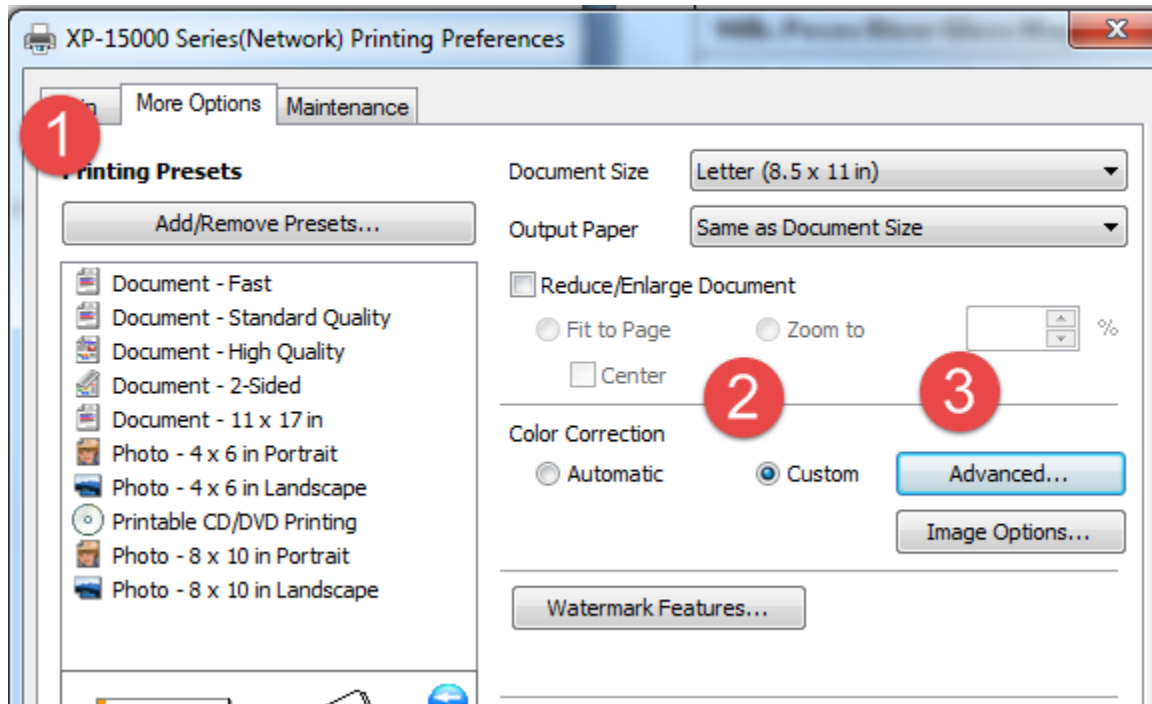
Handling Guides

Check our website to see if your paper has a Handling Guide. Guides contain important information and helpful tips. www.redriverpaper.com/guides

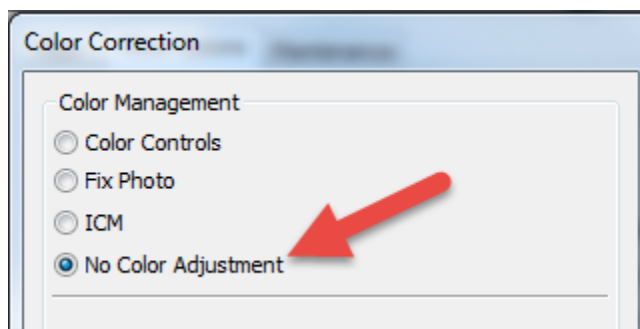
Windows Color Management Setup

When using profiles, the object is to disable the printer's color management software.

1. In the Printer Properties, click on the More Options tab.
2. Set Color Correction to Custom
3. Click the Advanced button



In the Color Correction dialog, select "No Color Adjustment" as shown.



MAC Users

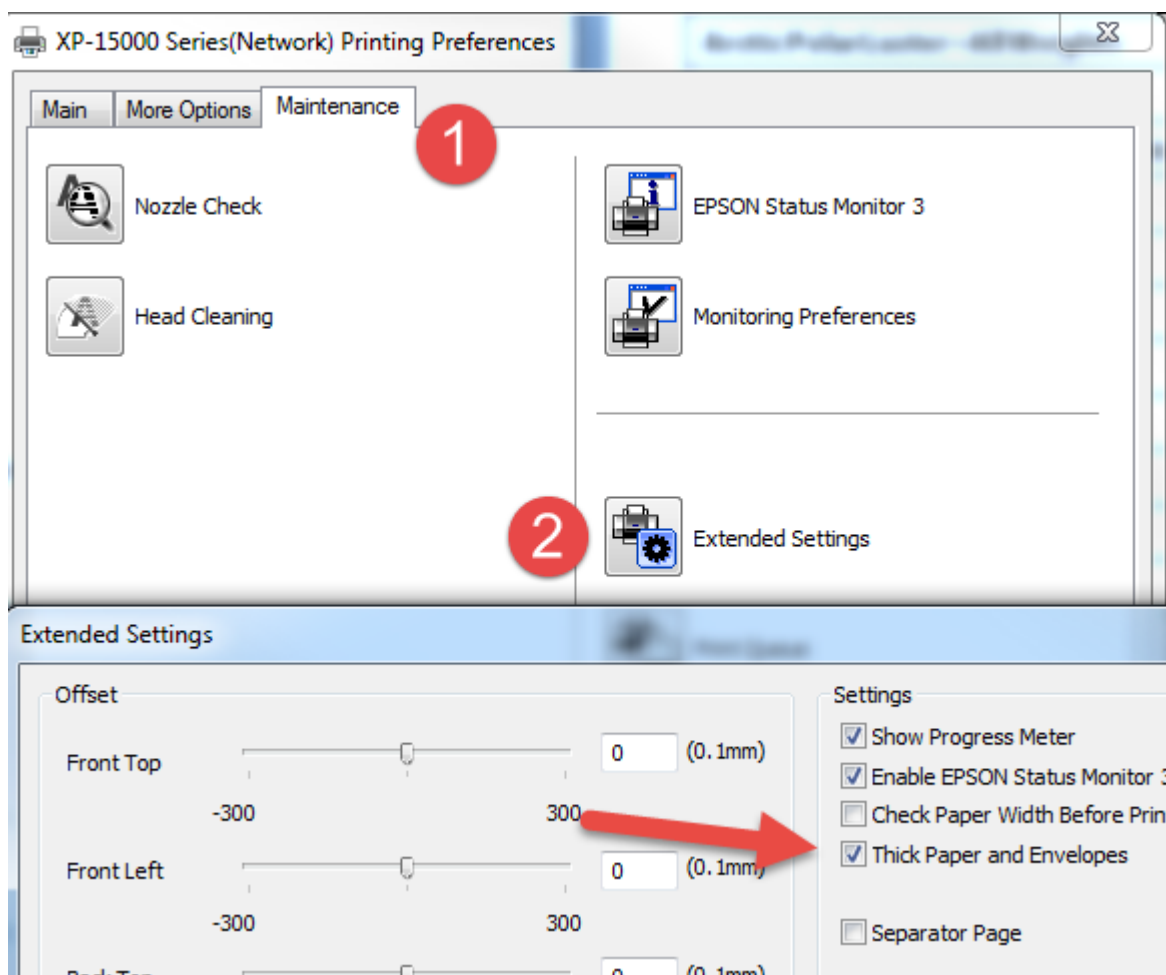
The Mac OS automatically disables the printer's color management system when you choose a paper profile in Photoshop, Elements, Lightroom, or similar software.

See our website support section for detailed help on the topic.

Thick Paper Setup - Windows

Go to the Maintenance Tab and click Extended Settings

Check "Thick Paper and Envelopes" in the Extended Settings dialog.



Thick Paper Setup - Mac

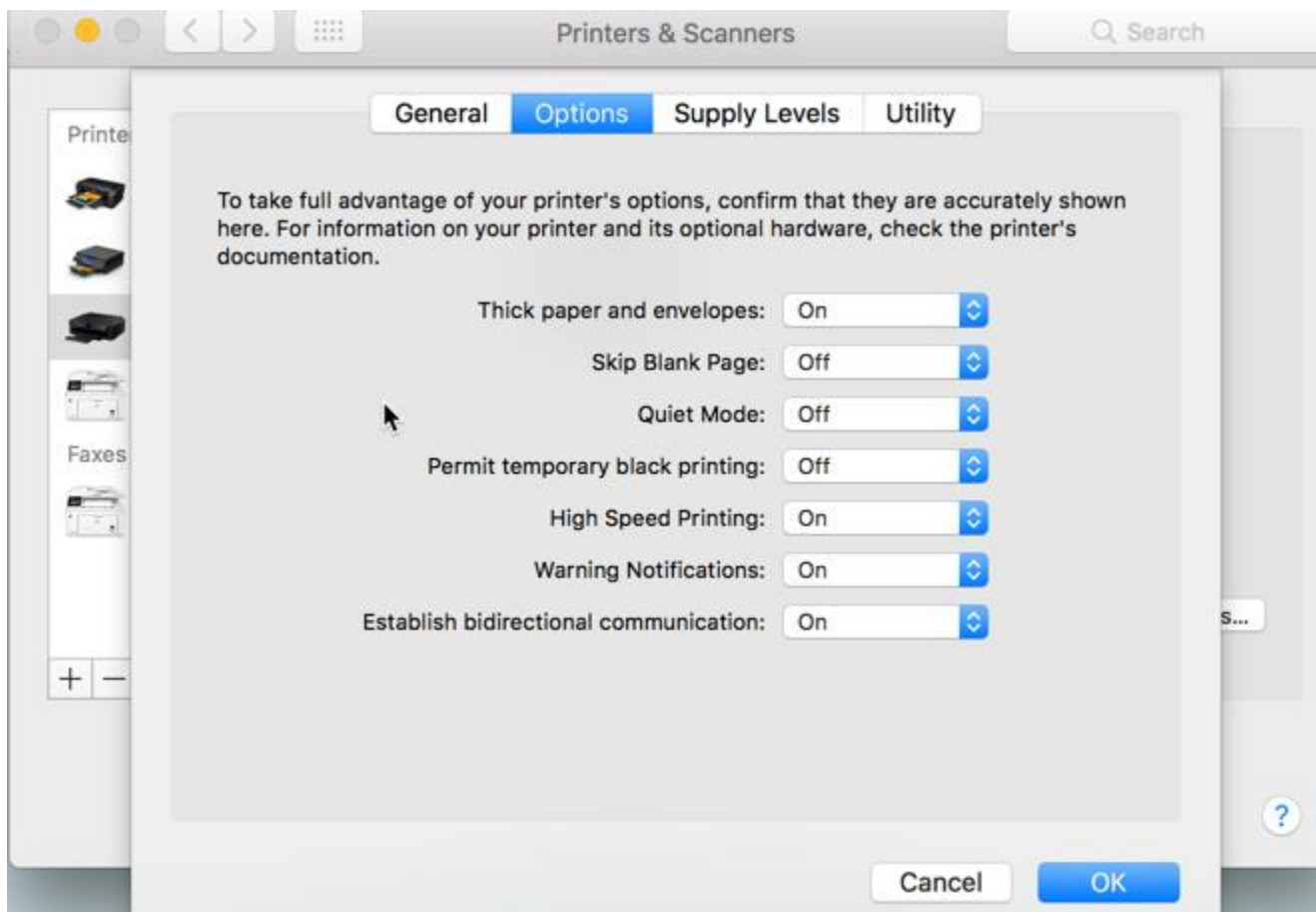
Go to System Preferences > Printers and Scanners

Highlight your printer and then click the "Options & Supplies" button.

Click on the "Options" tab

Set "Thick paper and envelopes" On and click OK.

Note: Your printer will most likely need to be turned on and connected.



Contact Red River Paper

support@redriverpaper.com

888-248-8774