



## Printer Color Profile Instructions

Color profiles are data files that contain a description of how a particular paper, ink, and printer create all colors, shades, and densities. Using a profile will result in more accurate and consistent output.

**Printer:** Epson Expression XP-15000

### Setting Recommendations

Color Correction – See page 3 of this document

Print Quality: High

### Support


How to install profiles


[www.redriverpaper.com/installprofiles](http://www.redriverpaper.com/installprofiles)

How to use profiles

[www.redriverpaper.com/useprofiles](http://www.redriverpaper.com/useprofiles)

### Some Hints

 The name of the paper you are using will not be listed in the media setting drop down menu in the printer driver. That menu only has the names of manufacturer papers.

 Do not use the printer driver's "Preview before printing feature". It can interrupt the color management process.

### THICK / HEAVY PAPERS

Set the printer's thick paper setting for heavy and thick paper. See the chart on page 2.  
See support tips on page 4 for thick paper settings.

Top paper tray – We recommend you use the top paper tray heavy and thick media. Examples are Aurora Art, 86lb. Pecos Gloss Duo, and San Gabriel Baryta SemiGloss.

### Contact Red River Paper

support@redriverpaper.com

888-248-8774

## MEDIA SETTING RECOMMENDATIONS

Paper	Media Setting	Special
<b>68lb. UltraPro Gloss 2.0</b>	Ultra Premium Photo Paper Glossy	
<b>Polar Metallic Papers</b>	Ultra Premium Photo Paper Glossy	
<b>60lb. &amp; 42lb. Pecos River Gloss</b>	Premium Photo Paper Glossy	
<b>96lb. Pecos River Gloss</b>	Premium Photo Paper Glossy	<a href="#">Thick paper setting</a>
<b>86lb. Pecos River Gloss Duo</b>	Premium Photo Paper Glossy	<a href="#">Thick paper setting</a>
<b>UltraPro Luster 300</b>	Ultra Premium Photo Paper Luster	
<b>68lb. UltraPro Satin 4.0</b>	Ultra Premium Photo Paper Luster	
<b>66lb. Palo Duro Satin</b>	Ultra Premium Photo Paper Luster	
<b>66lb. Arctic Polar Satin</b>	Ultra Premium Photo Paper Luster	
<b>Arctic Polar Luster – All Weights</b>	Ultra Premium Photo Paper Luster	
<b>Premium Matte Papers – All Weights</b>	Premium Presentation Paper Matte	
<b>60lb. Polar Matte / Double Sided</b>	Premium Presentation Paper Matte	
<b>88lb. Polar Matte</b>	Premium Presentation Paper Matte	<a href="#">Thick paper setting</a>
<b>60lb. River Linen 2.0</b>	Premium Presentation Paper Matte	
<b>60lb. Paper Canvas</b>	Premium Presentation Paper Matte	
<b>Aurora Art Natural</b>	Velvet Fine Art	<a href="#">Thick paper setting</a>
<b>Aurora Art White</b>	Velvet Fine Art	<a href="#">Thick paper setting</a>
<b>Palo Duro Etching 315</b>	Velvet Fine Art	<a href="#">Thick paper setting</a>
<b>Palo Duro Smooth 310</b>	Ultra Smooth Fine Art Paper	<a href="#">Thick paper setting</a>
<b>Palo Duro Softgloss Rag</b>	Premium Photo Paper Semi-gloss	<a href="#">Thick paper setting</a>
<b>San Gabriel Baryta SemiGloss 2.0</b>	Premium Photo Paper Semi-gloss	<a href="#">Thick paper setting</a>

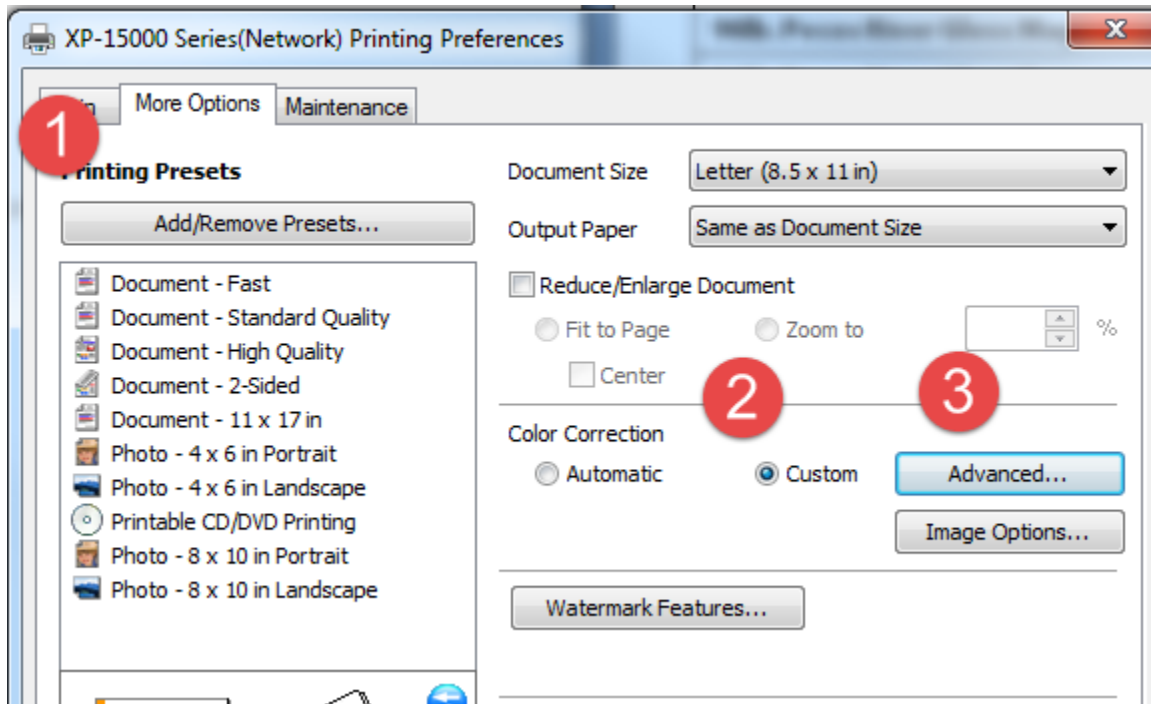
## Handling Guides

Check our website to see if your paper has a Handling Guide. Guides contain important information and helpful tips. [www.redriverpaper.com/guides](http://www.redriverpaper.com/guides)

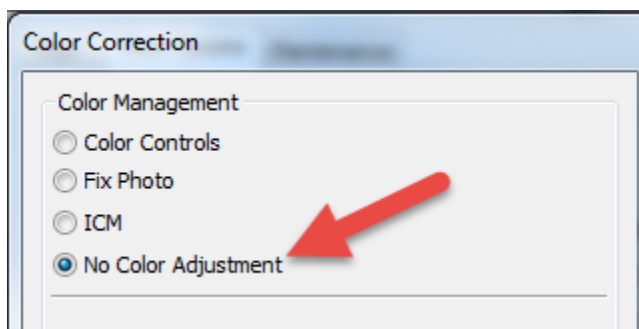
## Windows Color Management Setup

When using profiles, the object is to disable the printer's color management software.

1. In the Printer Properties, click on the More Options tab.
2. Set Color Correction to Custom
3. Click the Advanced button



In the Color Correction dialog, select "No Color Adjustment" as shown.



## MAC Users

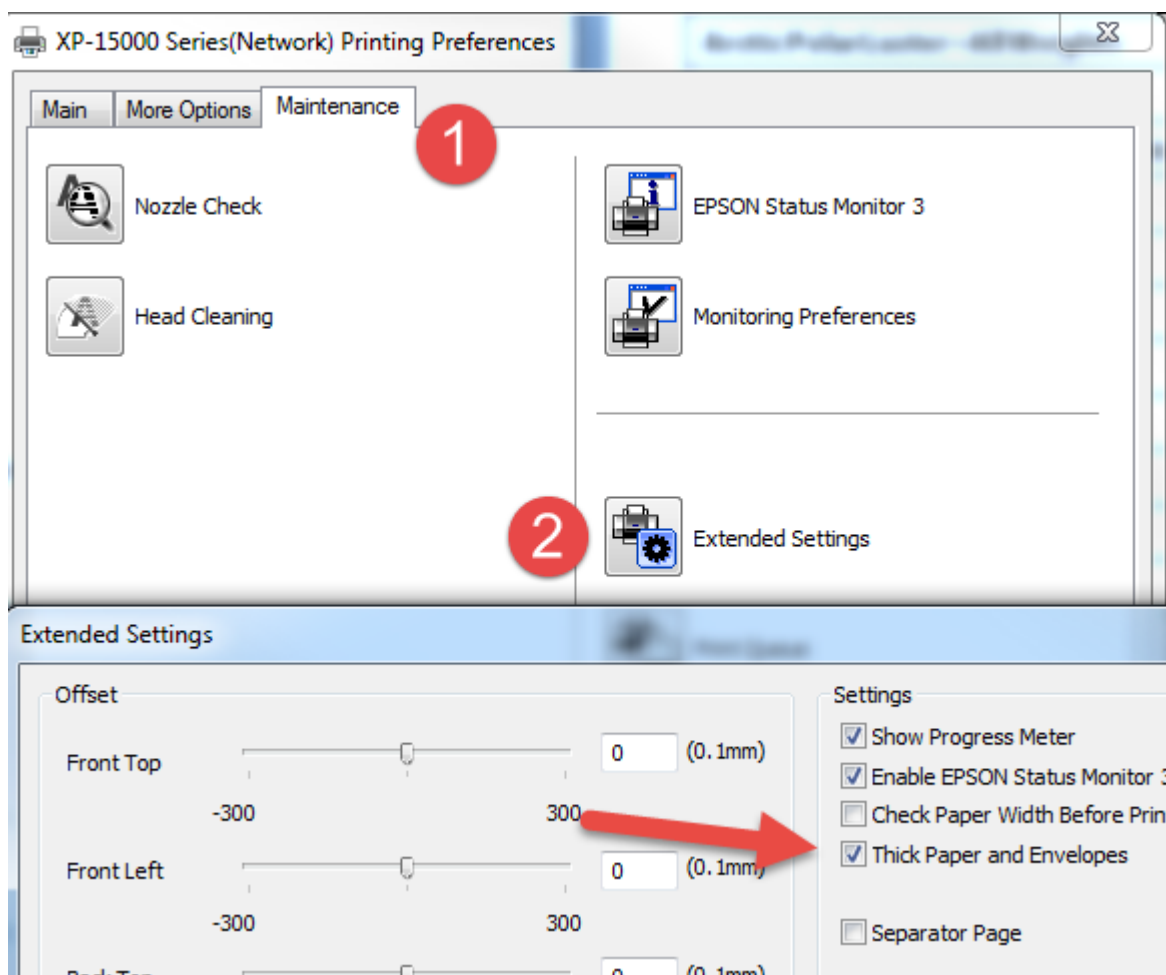
The Mac OS automatically disables the printer's color management system when you choose a paper profile in Photoshop, Elements, Lightroom, or similar software.

See our website support section for detailed help on the topic.

## Thick Paper Setup - Windows

Go to the Maintenance Tab and click Extended Settings

Check "Thick Paper and Envelopes" in the Extended Settings dialog.



## Thick Paper Setup - Mac

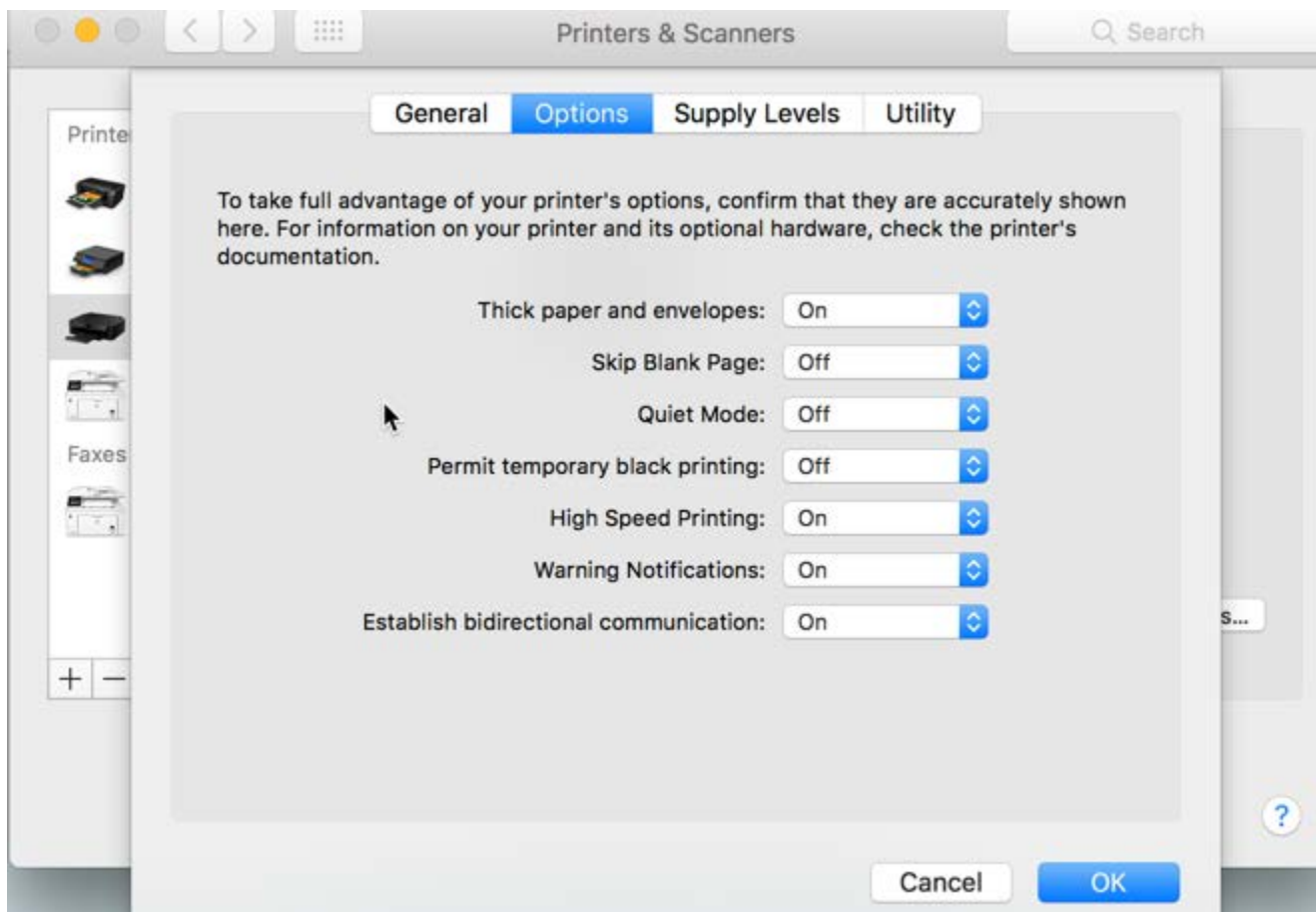
Go to System Preferences > Printers and Scanners

Highlight your printer and then click the "Options & Supplies" button.

Click on the "Options" tab

Set "Thick paper and envelopes" On and click OK.

Note: Your printer will most likely need to be turned on and connected.



## Contact Red River Paper

[support@redriverpaper.com](mailto:support@redriverpaper.com)

888-248-8774