



## Printer Color Profile Instructions

Color profiles are data files that contain a description of how a particular paper, ink, and printer create all colors, shades, and densities. Using a profile will result in more accurate and consistent output.

**Printer:** Canon G1220, G1230, G2260, G2270, G3260, G3270, G4270

**Ink:** GI-21 Series

### Support


How to install profiles

[www.redriverpaper.com/installprofiles](http://www.redriverpaper.com/installprofiles)

How to use profiles

[www.redriverpaper.com/useprofiles](http://www.redriverpaper.com/useprofiles)

### Some Hints

 The name of the paper you are using will not be listed in the media setting drop down menu in the printer driver. That menu only has the names of manufacturer papers.

Do not use the printer driver's "Preview before printing feature". It can interrupt the color management process.

Turn on your printer's thick paper setting when using heavy weight papers.

## MAC USER NOTICE

### Mac

Canon does not support the G620 with a driver. Instead, they fall back to Apple AirPrint, which does not allow for application managed colors.

### What does this mean?

It means you cannot use color profiles provided by Red River Paper or other paper brands.

### What can I do?

You can allow the printer to manage colors. Use the recommended media settings on page two of this document. There are no workarounds.

## MEDIA SETTING RECOMMENDATIONS

These are the media setting you select in the printer driver. See below for examples of what that looks like on your computer.

Paper	Media Setting	Special
<b>68lb. UltraPro Gloss</b>	Photo Paper Plus Glossy II	
<b>60lb. &amp; 42lb. Pecos River Gloss</b>	Photo Paper Plus Glossy II	
<b>32lb. Premium Gloss</b>	Glossy Photo Paper	
<b>UltraPro Luster 300</b>	Photo Paper Pro Luster	
<b>UltraPro SemiGloss Duo 255</b>	Photo Paper Plus Semi-gloss	
<b>68lb. UltraPro Satin 4.0</b>	Photo Paper Plus Semi-gloss	
<b>66lb. Palo Duro Satin</b>	Photo Paper Plus Semi-gloss	
<b>66lb. Arctic Polar Satin</b>	Photo Paper Plus Semi-gloss	
<b>Arctic Polar Luster – All Weights</b>	Photo Paper Plus Semi-gloss	
<b>Polar Metallic Papers</b>	Photo Paper Plus Glossy II	
<b>Premium Matte – All Weights</b>	Matte Photo Paper	
<b>60lb. Polar Matte / Double Sided</b>	Matte Photo Paper	
<b>60lb. River Linen 2.0</b>	Matte Photo Paper	
<b>60lb. Paper Canvas</b>	Matte Photo Paper	

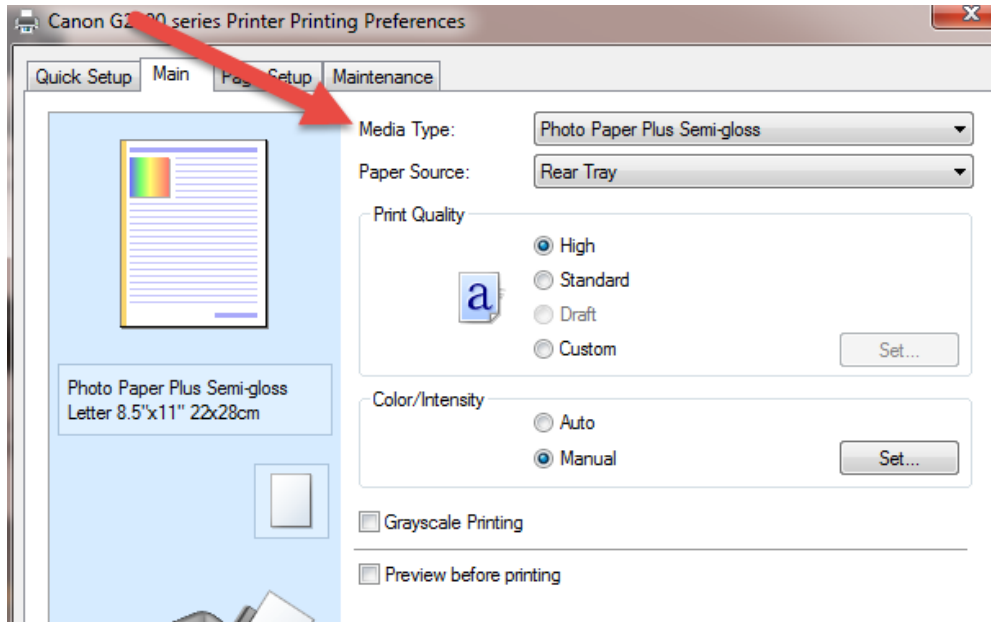
Full instructions for using printer profiles are on our website:

[www.redriverpaper.com/useprofiles](http://www.redriverpaper.com/useprofiles)

## Where does the Media / Paper Type go?

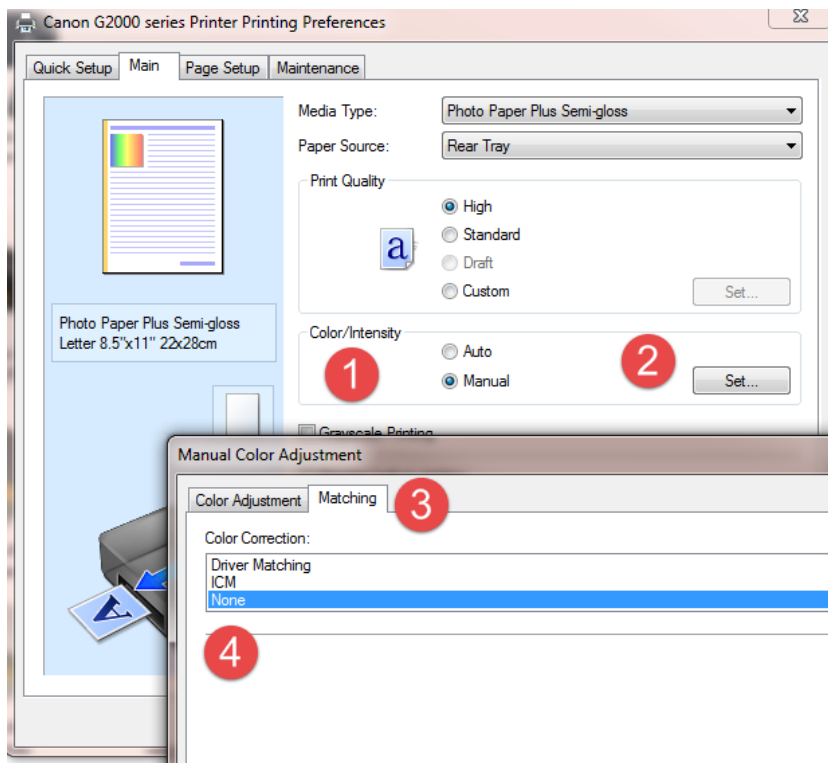
Using the above table, find the media type we recommend using when printing with a profile. Then select it in the printer driver dialog. See below for examples.

The Printing Preferences dialog is your access to the printer driver. Click on the Paper Type drop down menu and choose the correct setting. NOTE: You need to do this or verify it is accurate each time you print!



## How to Turn off the Printer's Color Management?

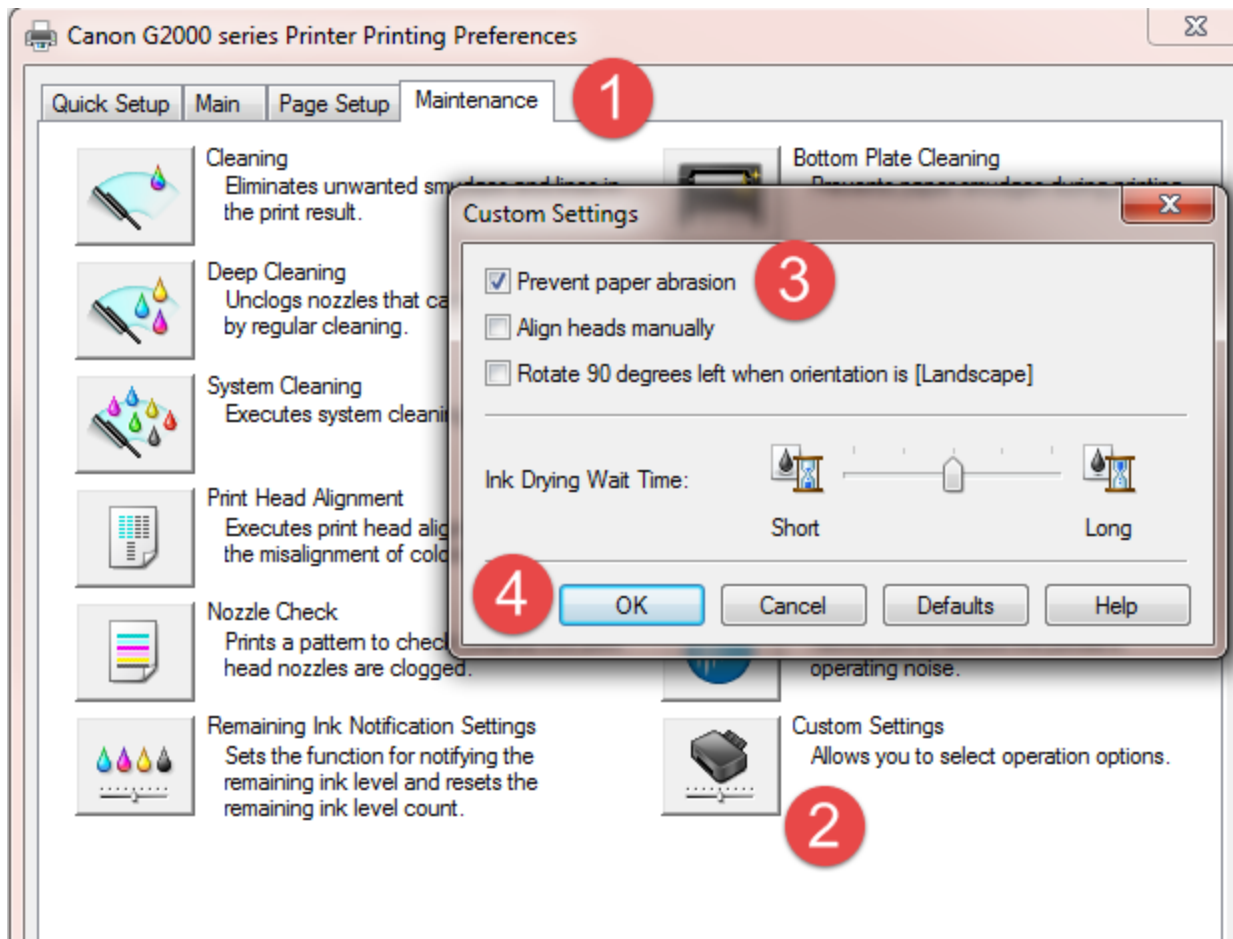
Color / Intensity : Manual > Set > Matching Tab > Color Correction: None



## Windows - Thick Paper Setting

In the Printer Properties

Maintenance tab > Custom Settings > Prevent Paper Abrasion



## Handling Guides

Check our website to see if your paper has a Handling Guide. Guides contain important information and helpful tips. [www.redriverpaper.com/guides](http://www.redriverpaper.com/guides)

## Further Help

Go to <http://www.redrivercatalog.com/infocenter/> for more help with driver settings and more.