



Photoshop CS4 – HP – Windows

Color profiles are pieces of software that contain the color space, or dynamic range of a particular printer, ink, and paper combination. Printer color profiles are crucial to a color-managed workflow that results in accurate and consistent color reproduction.

Download the Profile

Click on the link for your printer and Red River inkjet paper. You will be prompted to download a file. We recommend having it go to your desktop or other readily available location on the hard drive.

Open the ZIP file

We use a program to create universal ZIP files. They work with the native unzip software provided by Microsoft and Apple.

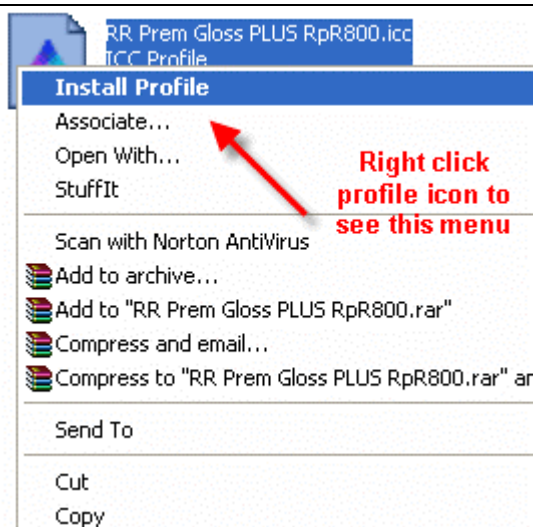
Install the Profile

The ICC files must be placed in the proper folder for your editing application to see and use them.

After the profile is unzipped, simply RIGHT CLICK on the file and choose install from the menu. You can also drag and drop into the profiles folder. See the chart below.



PC Profile Icon

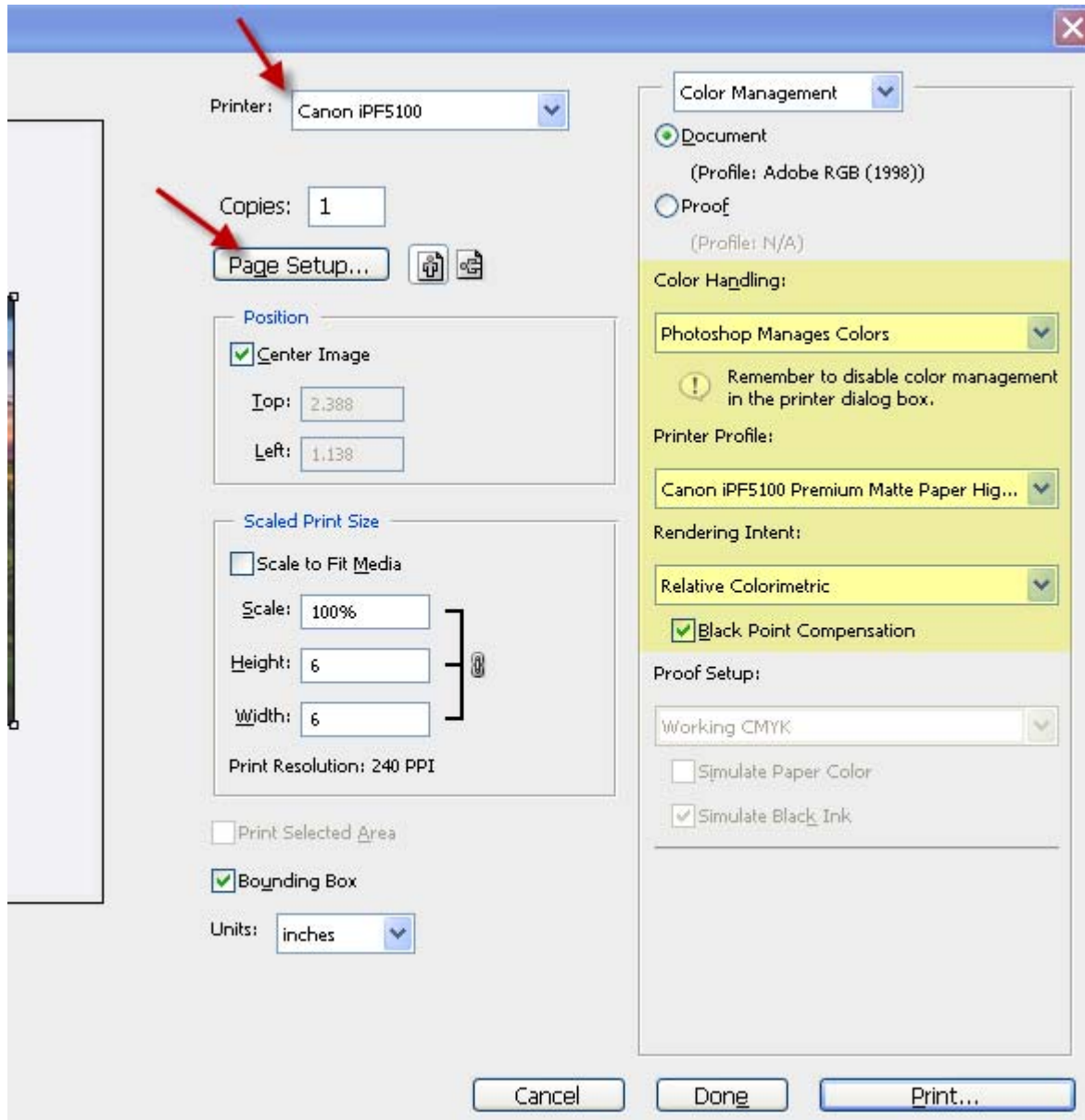


PC profile installation procedure

OS	ICC File Location
Win 98/ME	Windows/System/Color
Win NT/2000	Windows/System32/Spool/Drivers/Color
WinXP / Vista	Windows/System32/Spool/Drivers/Color

Using Red River Paper profiles with your HP printer

From Photoshop choose File > Print or hit Ctrl + P on your keyboard and this dialog appears.



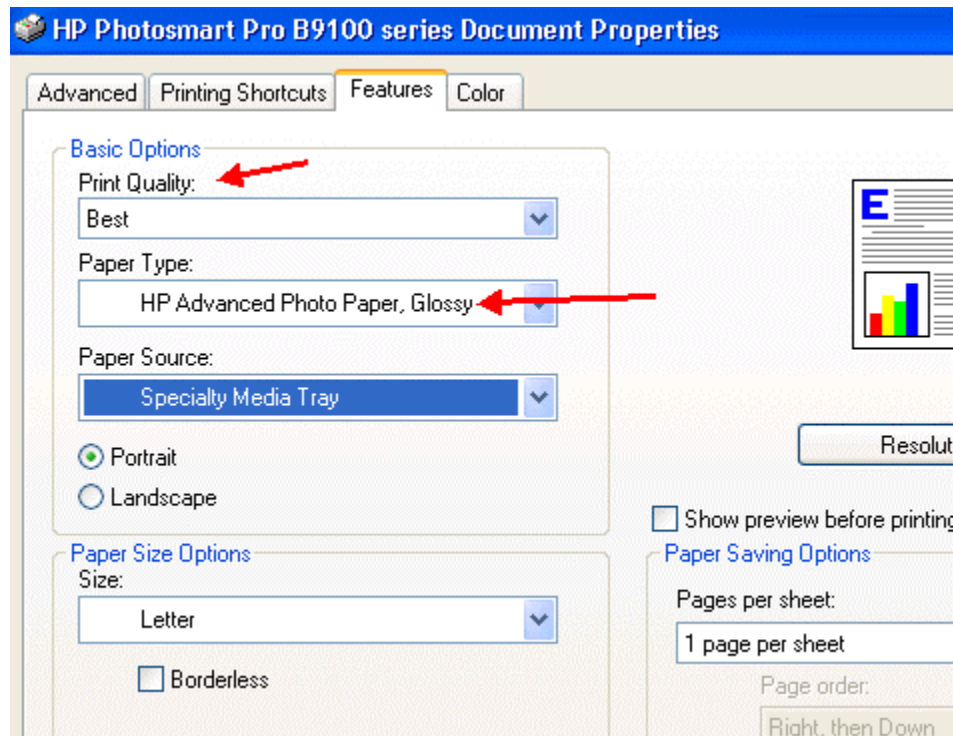
In the Color Handling area set the following:

- 1) Color Handling: Photoshop Manages Color
- 2) Printer Profile: Choose the profile for your paper and printer
- 3) Rendering Intent: We recommend Relative Colorimetric or Perceptual
- 4) Black Point Compensation should be checked

Click the Page Setup button to open the your printer's properties dialog.

Using Red River Paper profiles with your HP printer

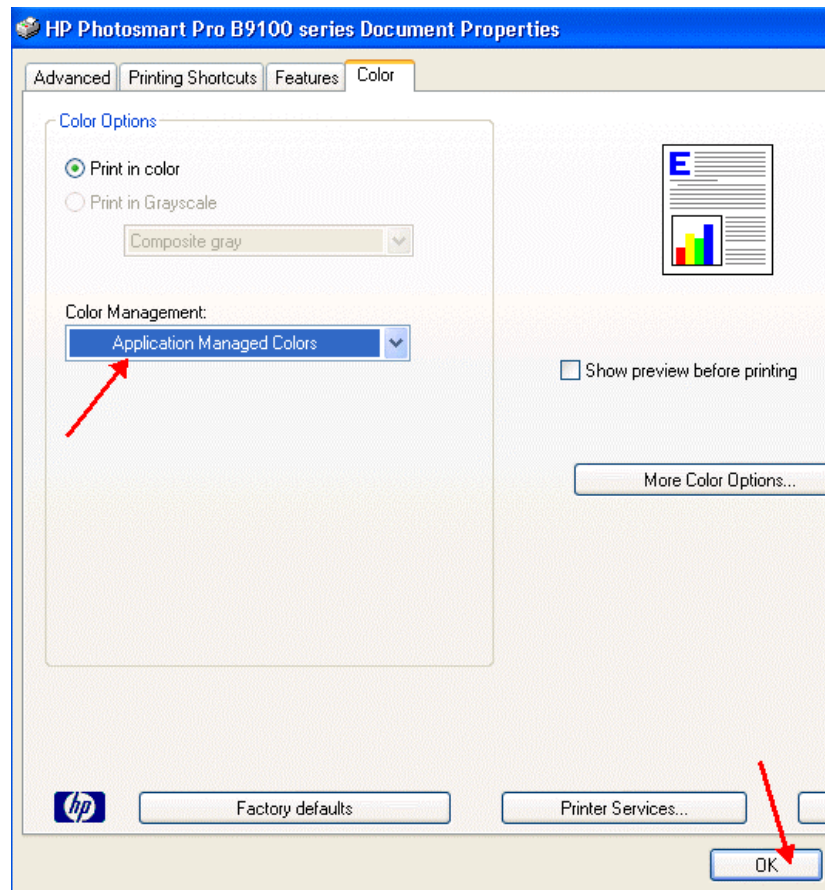
Set Print Quality to best and Paper Type to the setting recommended in your profile instructions.



Now click on the COLOR tab above.

Using Red River Paper profiles with your HP printer

Set Color Management to Application Managed Colors and click OK



You should be back at Photoshop's print with preview. We do this extra work to insure that Photoshop has not modified your color management choices (which it has a habit of doing randomly).

The settings described above should be followed closely or you will have less than satisfactory results.

For more information go to <http://www.redriverpaper.com/profiles>

Email us: advice@redriverpaper.com

Call us: 888-248-8774